

STORIES OF IMPACT



2025



Contents

- 04** Welcome
- 06** Impact at a glance
- 08** A year of scientific discovery
- 10** Impact stories
- 26** Governance & staff
- 28** Working in partnership

We are grateful to everyone who provided the images and illustrations for this document

Welcome

2025 was a year of strong progress for CABI, marked by meaningful delivery across our mission and deeper engagement with our 48 Member Countries. Despite global challenges, we improved millions of farmers' livelihoods, expanded the reach of our science and knowledge services and earned international recognition for our leadership in sustainable agriculture. These achievements underscore the commitment and impact of our teams worldwide.

Our Regional Consultations with Member Countries across Asia, Africa, Europe and the Americas were a real highlight. These well-attended discussions provided Member Countries with valuable space to share priorities and experiences, helping shape the refinement of CABI's global strategy through to 2028. The consultations also delivered a clear mandate for CABI to continue strengthening its leadership in coordinating global action on pesticide risk reduction – a major challenge consistently raised by Member Countries.

Our updated strategy carries forward our five core goals, built on with a clearer articulation of the links between food systems and climate change, and integration of increasingly important issues like pesticide risk reduction and technologies including generative AI.

1. Supporting smallholder food security and livelihoods
2. Helping communities with climate adaptation
3. Enhancing opportunities for rural women and youth
4. Protecting biodiversity and supporting sustainable use of resources
5. Widening the reach and impact of science in agriculture and the environment

Like many organizations in its sector, CABI faced a shifting funding environment in 2025. We took the difficult decision to reduce headcount and then reshaped CABI to enhance our resilience and maximise our ability to meet future Member demands.

Despite these pressures, our work in 2025 achieved significant impact. 2.1 million farmers saw improvements in their livelihoods, 2.17 million saw higher yields, and 26.4 million researchers benefited from CABI's curated knowledge.

The year also brought important recognition. CABI's Bioprotection Portal received a Gold Stevie Award for Sustainability Initiative of the Year in Europe; our Chief Scientist, Dr Ulli Kuhlman, received an Integrated Lifetime Achievement Award of Excellence and FAO recognized CABI with an award for leadership in sustainable plant production and protection.

CABI also completed the move of its UK Science Lab to Silwood Park, hosted by Imperial College, opening new opportunities for scientific collaboration. Looking ahead to 2026, we are encouraged by growing interest from countries seeking to join our membership community, and we look forward to working with Member Countries to continue improving lives and livelihoods across the world.

Her Excellency Ms Chileshe Kapwepwe, CABI Chair

Dr Daniel Elger, CABI CEO



Impact at a glance

YIELDS BOOSTED FOR
2.17m

Farmers are seeing improved crop yields as a result of better information and practices

2.1m
LIVELIHOODS IMPROVED

Our work helped farmers increase their income, strengthening household resilience and food security

8.87m
FARMERS REACHED

We delivered trusted agricultural and environmental advice to farmers across the Global South

2.85m
WOMEN AND YOUNG PEOPLE EMPOWERED

Through expanded access to agricultural advice, technologies and farming inputs

Bioprotection goes even more global

The CABI BioProtection Portal is now available and promoting safer, sustainable pest management in

50
COUNTRIES

Knowledge for global research and policymaking

26.4m
RESEARCHERS WORLDWIDE supported through access to the CABI Digital Library



344,000 ha

MANAGED SUSTAINABLY
Our interventions helped bring land under sustainable management practices

A year of scientific discovery

As a science-driven organization, CABI brings together research, publishing, and innovation. In 2025, we produced 172 research publications, most of which were published open access.

Highlights include research on surveillance, agricultural extension effectiveness, youth employment pathways, emerging pest threats in Uganda, and global inequities in the study of One Health.

172

research publications in 2025

87

published in journals with impact factor >2

49

publications in peer-reviewed journals with CABI lead author

47

peer-reviewed journals published as open access



Research published in *CABI Agriculture and Bioscience* shows how publicly shared DNA barcodes and photos from citizen scientists are helping track the global spread of a moth used to control the invasive *lantana* plant.



A study in *African Entomology* demonstrates that introducing a natural enemy of papaya mealybug not only boosts farmers' understanding and acceptance of biological control – especially among men – but also leads to higher yields on farms reached by the intervention, highlighting the strong benefits of biocontrol and the ongoing need for gender-responsive training to help reduce reliance on synthetic pesticides.



Exploring youth employment across Africa's agriculture sector, a paper in *CABI Agriculture and Bioscience* outlines six promising pathways to work: primary production, agri-service provision, market facilitation, value addition, agri-dealership and green entrepreneurship.



In *Frontiers in Agronomy*, a CABI-led research team identified over 9,000 pest species not previously recorded in Uganda as potential threats to farmers' food security and livelihoods. Using the Horizon Scanning Tool, scientists assessed risks and recommended actions.



Tracking global trends in One Health research, a paper in *CABI One Health* reports exponential growth in publications since 2018. However, the analysis reveals that major power imbalances exist between countries conducting and leading One Health research.



See all our scientists' publications

PlantwisePlus expands global support for smallholder farmers

In 2025, the CABI-led PlantwisePlus programme supported smallholder farmers with plant health advice. Each programme intervention helped to achieve concrete benefits and outcomes for farmers in low- and middle-income countries, increasing their yields and incomes while supporting safer and more sustainable crop production practices.

5.8m

smallholder farmers
reached directly with advice

>2m

benefited from
increased incomes

26,000

stakeholders trained in pesticide
risk reduction approaches



Read the
full story



Reducing pesticide risks, protecting people and the planet

We must reduce pesticide risks to protect the health of humans, animals, the environment, and trade. Campaigns such as Ukulima True in Kenya have seen measurable changes in people's behaviour around the uptake of integrated pest management (IPM), driving widespread adoption of safer practices. Training agro-dealers further improves the judicious use of pesticides, strengthening resilient, sustainable food systems.

15%

increase in the adoption of safer pesticide use practices

18%

increase in the use of IPM practices

18%

higher willingness to pay for biopesticides

“After training I opened up an agro-input shop and advise farmers with confidence.”

– **Nakiryia Tabitha**



Read the full story

Pest preparedness safeguards coconut production

The coconut hispine beetle threatens coconut production and farmer livelihoods in Bangladesh and beyond. CABI is supporting the country's government with pest preparedness, including risk analysis and surveillance. These proactive, science-based interventions help to keep the beetle at bay, strengthening early detection and safeguarding the country's coconut industry.



Coconut hispine beetle can cause losses of up to **50-70%**

Coconut hispine beetle opposite @Hanyrol H. Ahmed Sah



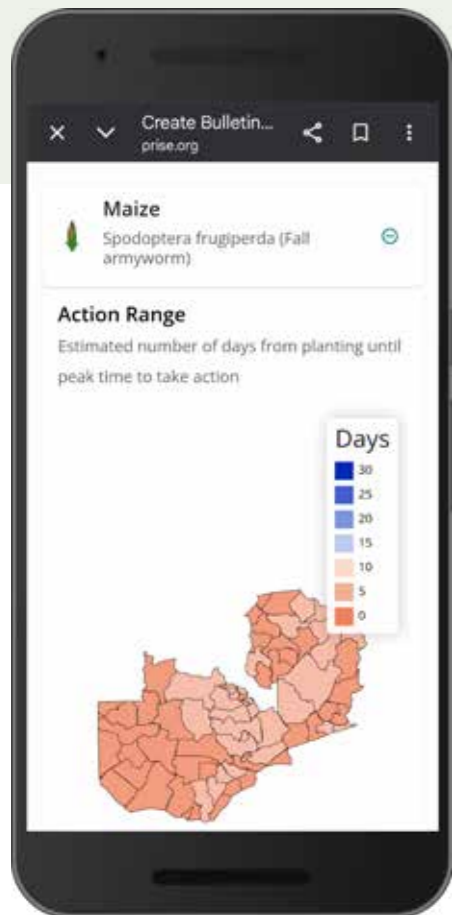
Read the full story

Restoring the land through collective action

Through a CABI-led initiative, Maasai communities in northern Tanzania are reclaiming grazing lands overtaken by invasive prosopis. Using an integrated landscape management approach, they are restoring pastureland. Local people are now sustaining the work themselves, strengthening long-term land management, protecting their livelihoods and safeguarding their communities' futures.



Read the full story



Pest alerts boost farmer yields and incomes

CABI has contributed to critical quantitative evidence demonstrating the link between pest alert systems such as PRISE (the Pest Risk Information Service) and changes in smallholder farmers' behaviour and productivity. Providing pest alerts to smallholder farmers increases the likelihood that they adopt integrated pest management (IPM) by 8-32% and boosts their crop yields and income by 18-26%.

Pest alerts linked to

+18-26%
increase in crop yield and income



Sustainably integrating plant clinics into extension systems

In many countries, overstretched extension services mean smallholder farmers miss out on timely plant health advice. The CABI-led PlantwisePlus programme has been helping to close the gap through plant clinics – places where farmers can receive free diagnosis and remedial support. First established in 2011, the clinics now operate in over 30 countries. In 2025, Malawi achieved a milestone, running clinics in every district nationwide. The approach is improving pest management, encouraging the uptake of integrated pest management (IPM) and strengthening plant health systems.

In Malawi we trained plant doctors in all

28 districts

“This is a success story about building a resilient, national plant health system from the ground up.”

Dr Natasha Mwila, Regional Director for Southern Africa, CABI



Read the full story



Read the full story



Radio campaign empowers women farmers in Ghana

In Ghana, women farmers experience barriers to agricultural extension advice. This limits their productivity and impacts food security. With Farm Radio International and Government Partners, CABI has delivered a radio campaign to improve their access to agricultural knowledge. It reached over half a million listeners, strengthening women's identity as farmers and encouraging shared leadership in rural farming households.

 **500,000**
radio listeners reached

Turning education into enterprise

Many graduates struggle to turn education into work, but hands-on training can help. In Kenya, Mary Mueni turned her entrepreneurship degree into a successful agribusiness with the support of CABI and partners. Practical agribusiness skills transformed her into a confident entrepreneur, trainer and plant doctor, building her income and mentoring other young farmers.



“My life has completely transformed.”

Mary Mueni, Graduate, Kenya



“I no longer see myself as just helping. I'm a farmer, and I'm proud of it.”

Esther Benko, Farmer, Ghana



Read the full story



Read the full story

Natural pest control enhances rural livelihoods

From Kenya's papaya fields to its rangelands and conservation areas, non-native invasive species threaten crops and ecosystems alike. Using natural enemies like parasitic wasps and cochineal insects, CABI is using biocontrol to offer nature-based solutions to manage these invasive pests. Successes in the field show biocontrol can safeguard harvests, restore biodiversity and enhance rural livelihoods.

>50%

increase in income for farmers in areas where the parasitic wasp was released



Read the full story

Science-led biocontrol helping restore Europe's waterbodies

Across Europe, invasive aquatic plants damage waterbodies. Chemical and mechanical control can be costly and harmful. CABI scientists have developed biocontrol solutions, releasing specialist natural enemies to target Hydrocotyle and Crassula exotic weeds. UK trials show early success of ecosystems recovering, with cross-border partnerships now expanding releases in the Netherlands.



Read the full story

26.4m

supported through
CABI Digital Library

13,600

institutions with access
to CABI Digital Library

56m

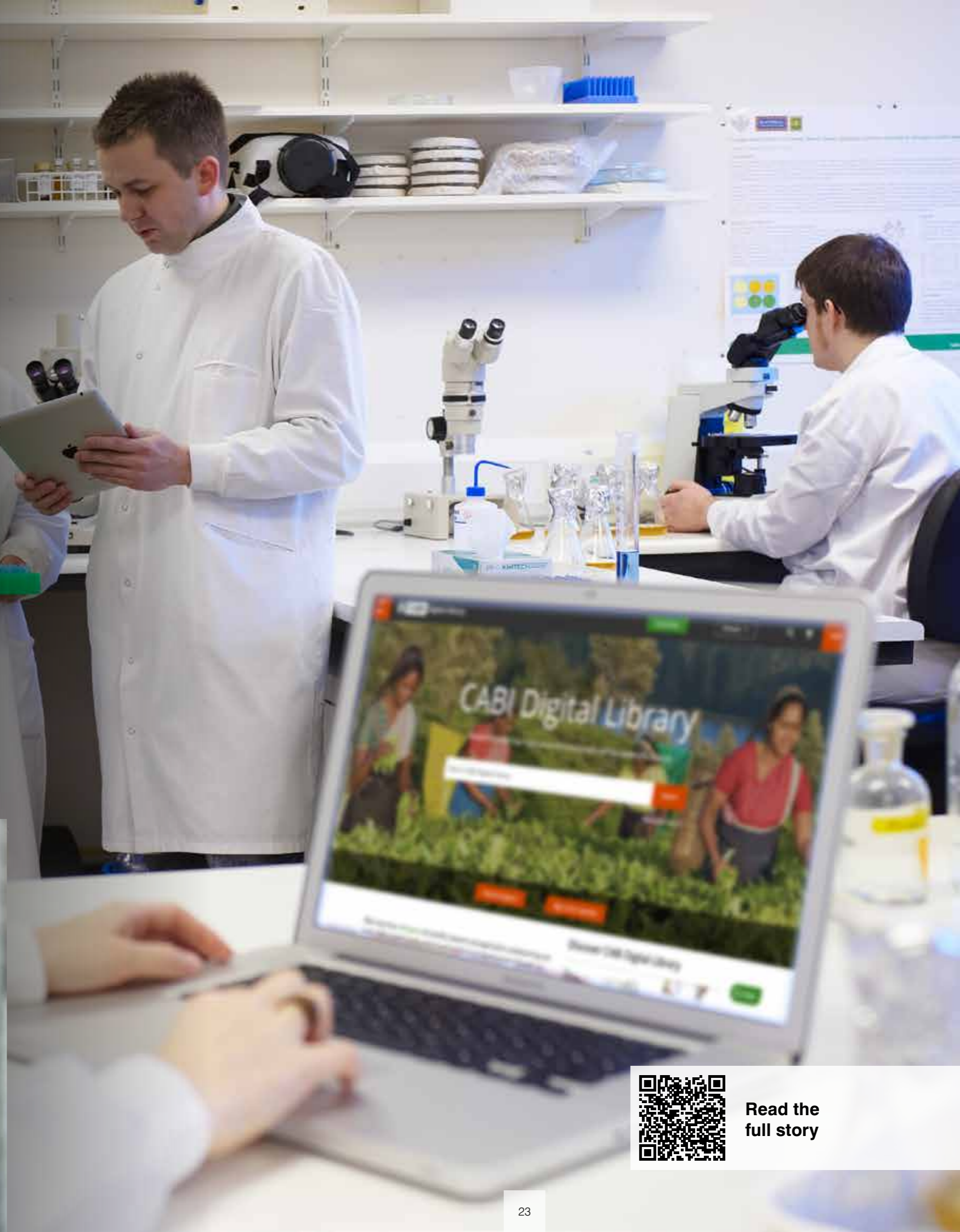
page views of CABI
Digital Library in 2025

Evidence, partnerships, and impact

In 2025, CABI supported 26.4 million students, researchers, and practitioners through the CABI Digital Library, which is now available to over 13,600 institutions. We advanced our work in evidence for policy, providing decision-makers with trusted science-based knowledge content, launched the sustainable development tool, SDGenie and strengthened our partnerships.

“Some of the most meaningful development actions we take are based on data and evidence, as they help us understand when and where our efforts deliver the most benefit.”

Food and Agriculture Adviser, FCDO



Read the
full story



Turning science journalism into action

SciDev.Net is the world's leading source of news, views and analysis for science and global development, operating as part of CABI. In 2025, its content was seen or heard 313.7 million times. Its journalism helped prompt public health, environmental and policy responses that changed people's lives, from maternal kidney screening in Uganda to child mpox vaccination advocacy in DR Congo. It also strengthened communications for the Science Granting Councils Initiative (SGCI), helping it reach 183.4 million people across Africa from 2023 to 2025.

300m

times SciDev.Net content was seen or heard

183m

times SciDev.Net helped SGCI content be seen or heard



Read the full story

CABI's Governance

CABI Board



**Her Excellency
Ms Chileshe Kapwepwe,
Chair**



**Her Excellency
Dr Fatou Bensouda**



Ms Simi Kamal



Mr Christoph Chesher



Mr Gary Ernest



Ms Ann Tutwiler



Ms Marcy Vigoda



Dr Daniel Elger, CEO



Mr Leonard Kimutai, CFO

EMT



Ms Linda Copsey



Ms Debbie Croft



Dr Ulrich Kuhlmann



Ms Carol McNamara



**Ms Phyllis Engefu
Ombonyo**



Mr Gary Pitts



Dr Andy Robinson

CABI Board

The Governing Board oversees CABI's programmes and guides management on operational and strategic issues.

Executive Management Team

CABI's Executive Management Team (EMT) is responsible for managing the organization's core business operations.

Executive Council

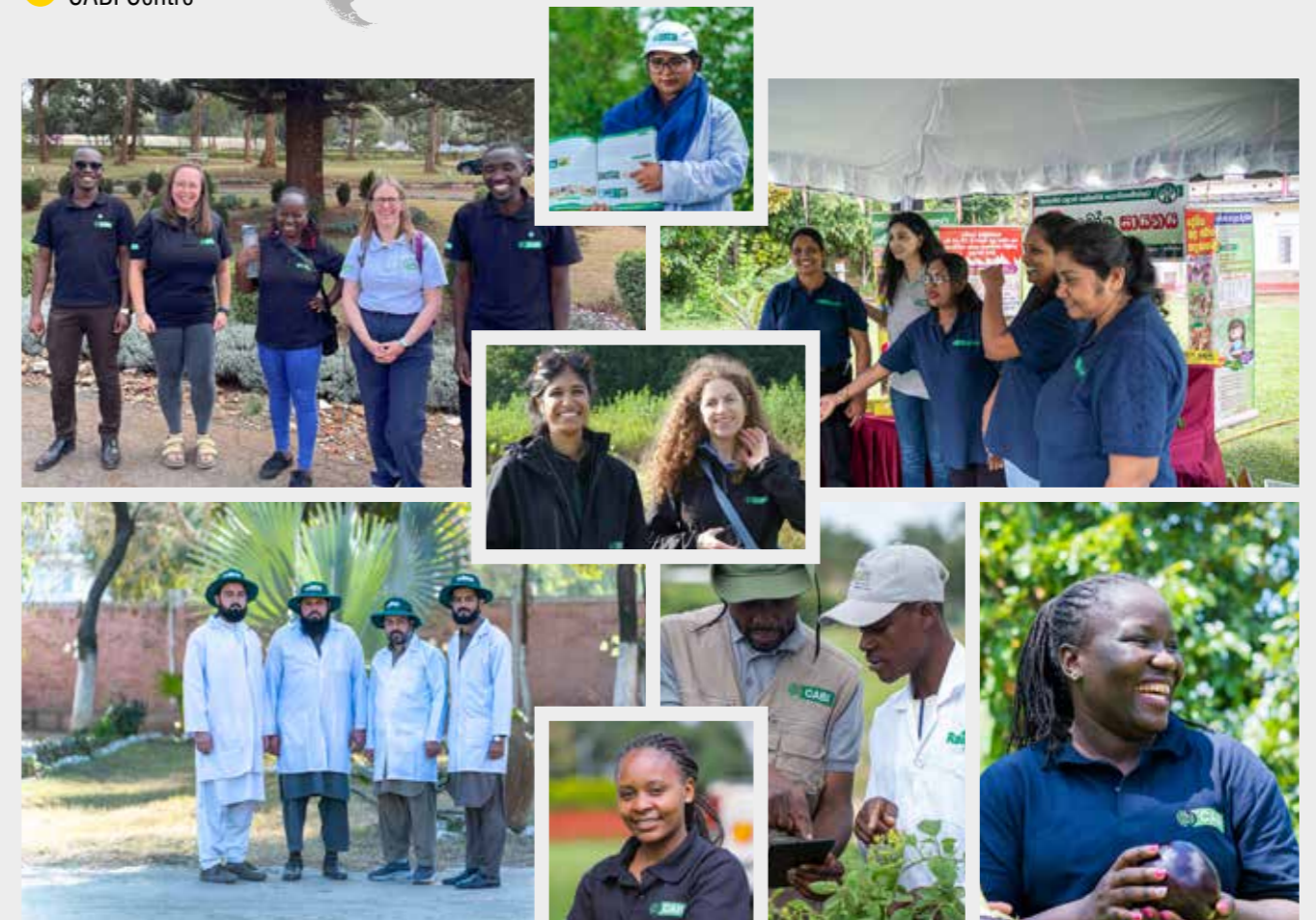
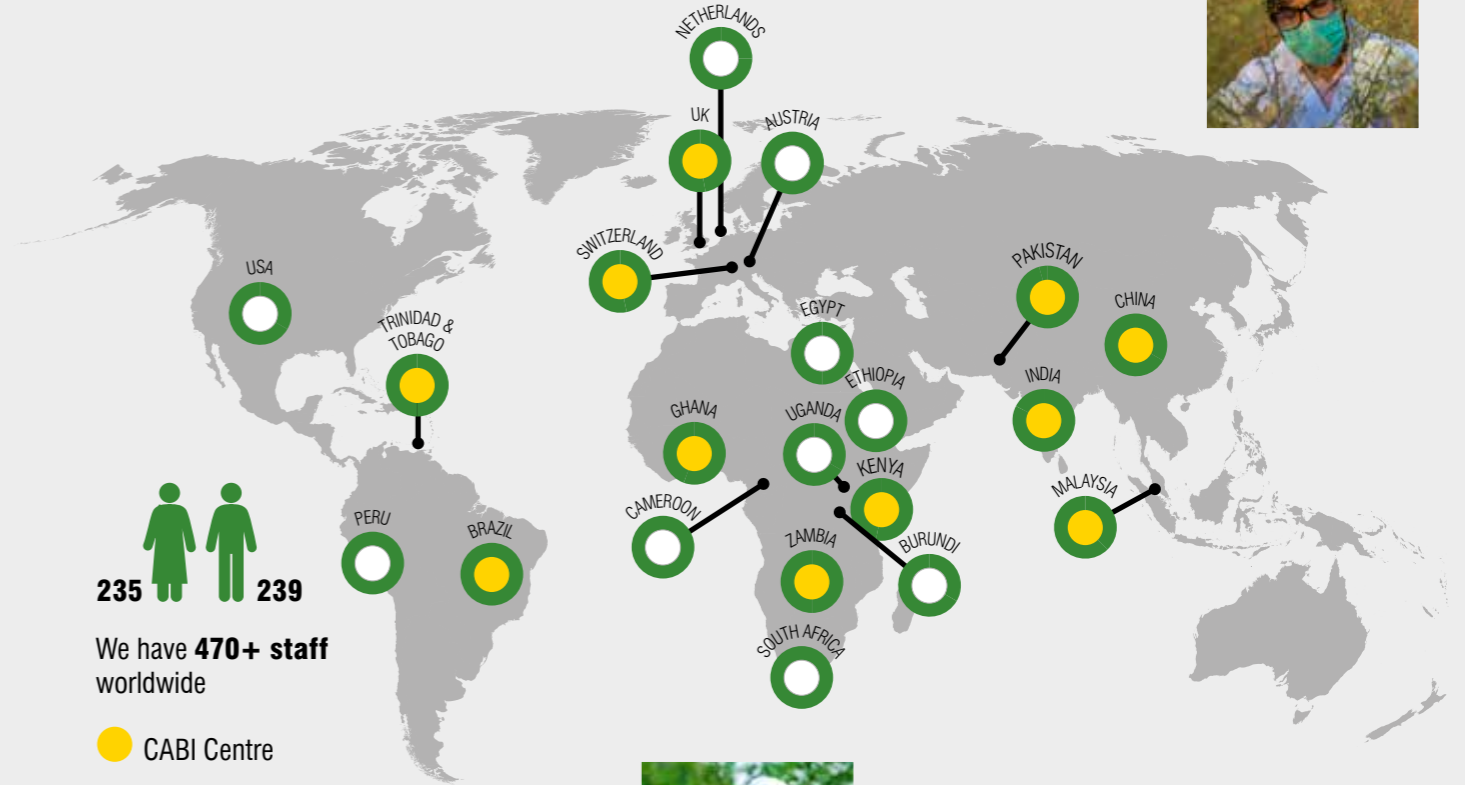
Representatives from each Member Country meet to monitor CABI's affairs and implement Review Conference resolutions.

Liaison Officers

Each Member Country has at least one Liaison Officer. Their role is to provide a crucial link between their country and CABI.

CABI's Staff

At the heart of CABI's successes are the experts who make it happen. From entomologists to plant pathologists, from content editors to publishers, we have the scientific expertise to help improve people's lives worldwide.





Delivering solutions together

In 2025, CABI continued to build strong global partnerships, working with our many Member Countries, donors, and customers to solve challenges in agriculture and the environment. These relationships enabled us to combine expertise, knowledge, and resources worldwide and we are committed to playing our part in achieving the Sustainable Development Goals (SDGs).

Below we highlight our key donors, whom we thank for their significant support:



Gates Foundation



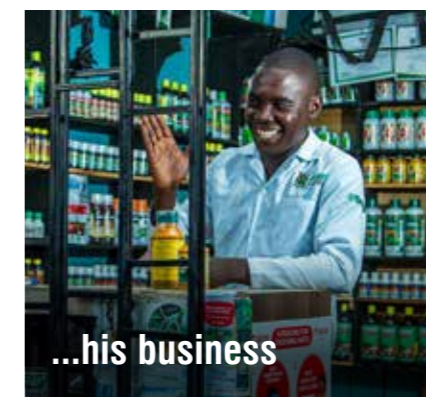
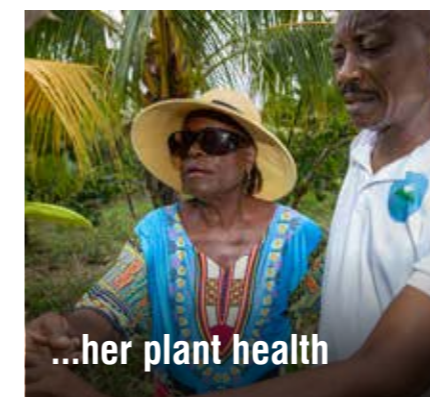
We also work in partnership with many global organizations to achieve our mutual objectives and broaden our impact and thank all our many global and local partners, including:



Breaking new scientific ground together

We are grateful to the institutions that subscribe to our publishing resources and to the **26.4 million users** who rely on our knowledge and insights to do better work every day.

Your ongoing support has enabled us to help...



Contact us

AFRICA

Ghana

CABI, CSIR Campus
No. 6 Agostino Neto Road
Airport Residential Area
PO Box CT 8630, Cantonments
Accra, Ghana

T: +233 (0)302 797 202

E: westafrica@cabi.org

Kenya

CABI, Canary Bird
673 Limuru Road, Muthaiga
PO Box 633-00621
Nairobi, Kenya

T: +254 (0)20 2271000 / 20

E: africa@cabi.org

Zambia

CABI, 5834 Mwange Close
Kalundu
PO Box 37589
Lusaka, Zambia

T: +260 967 619 665

E: southernafrica@cabi.org

AMERICAS

Brazil

CABI, Avenida Universitária,
3780, Bairro Altos do Paraíso,
Botucatu-SP, 18610-034, Brazil

T: +55 (14) 3880 7670

E: y.colmenarez@cabi.org

Trinidad & Tobago

CABI, 59 Gordon Street
Curepe, St. Augustine
Tunapuna 331323
Trinidad and Tobago

T: +1 868 6457628

E: caribbeanLA@cabi.org

USA

CABI, 6 Liberty Square #2775
Boston, MA 02109, USA

T: +1 (617) 682-9015

E: h.jansen@cabi.org

ASIA

China

CABI, Beijing Representative
Office
Internal Post Box 85
Chinese Academy of Agricultural
Sciences
12 Zhongguancun Nandajie
Beijing 100081, China

T: +86 (0)10 82105692

E: china@cabi.org

India

CABI, 2nd Floor, CG Block
NASC Complex, DP Shastri Marg
Opp. Todapur Village, PUSA
New Delhi – 110012, India

T: +91 (0)11 25841906

E: india@cabi.org

Malaysia

CABI, Building A19 , MARDI
43400 Serdang
Selangor, Malaysia

T: +60 (0)3 89432921

E: cabisea@cabi.org

Pakistan

CABI, Opposite 1-A
Data Gunj Baksh Road
Satellite Town, PO Box 8
Rawalpindi, Pakistan

T: +92 51 9292062

T: +92 51 8434979

E: cabi.cwa@cabi.org

EUROPE

Netherlands

CABI, Leusderend 6
3832 RC Leusden
The Netherlands

E: netherlands@cabi.org

Switzerland

CABI, Rue des Grillons 1
CH-2800 Delémont
Switzerland

T: +41 (0)32 4214870

E: europa-CH@cabi.org

UK

CABI, Nosworthy Way
Wallingford, Oxfordshire
OX10 8DE, UK

T: +44 (0)1491 832111

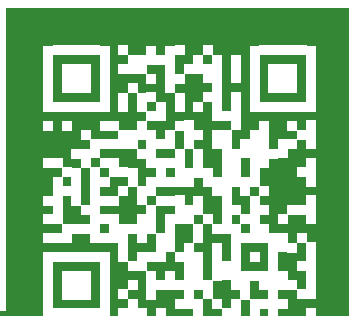
E: corporate@cabi.org

CABI, Silwood Park
Buckhurst Road
Ascot, Berkshire
SL5 7PY, UK

T: +44 (0)1491 829080

E: cabieurope-uk@cabi.org

E: microbialservices@cabi.org



www.cabi.org/stories-of-impact-2025