

A woman with dark skin, wearing a bright pink long-sleeved top and a matching pink and white geometric patterned scarf, is seated at a desk. She is looking down, focused on writing with a pink pen on a white notepad. The background is a bright, out-of-focus indoor space with large windows. The text 'Quarterly Briefing for Member Countries' is overlaid in white on the lower half of the image.

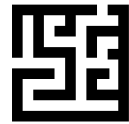
Quarterly Briefing for Member Countries

July 2025

Highlights



Member Country Consultation Meetings ongoing



Tough operating environment



Impactful development programmes



Expanding knowledge product portfolio

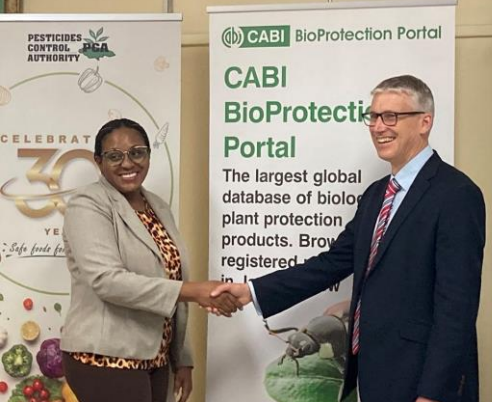
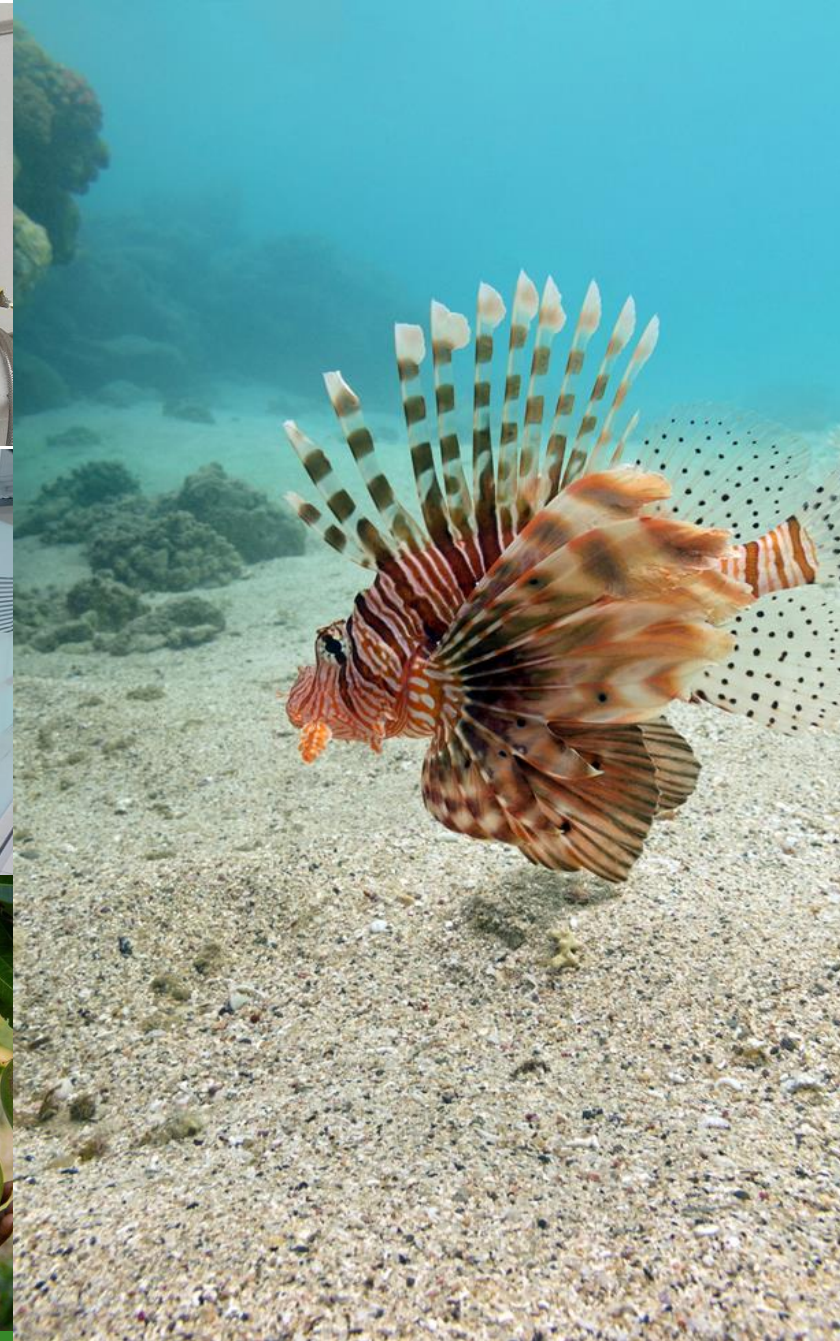


New SciDev.net training opportunity announced





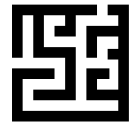




Highlights



Member Country Consultation Meetings ongoing



Tough operating environment



Impactful development programmes



Expanding knowledge product portfolio



New SciDev.net training opportunity announced



Today's agenda



Introduction & update – Daniel Elger



PlantwisePlus updates – Christine Alokit, Sajila Khan and Selpha Miller



CABI Cases – Claire Jackson



SciDev training – policy briefs – Charles Wendo



Finance update – Leonard Kimutai



Summary and questions – Daniel Elger



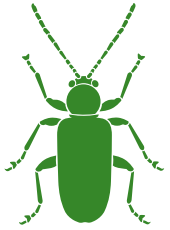
Christine Alokite

Sajila Khan

Selpha Miller

PlantwisePlus

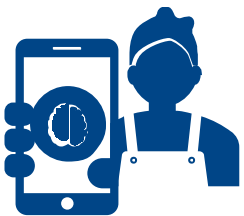
Impact pathways



Institutionalizing **pest preparedness** and response planning approaches with national and regional partners to ensure sustainability and long-term benefits



Engaging stakeholders, existing and new, to identify opportunities for **pesticide risk reduction**, leading to the adoption of lower-risk plant protection practices and products, including sustainable biological control agent solutions where relevant



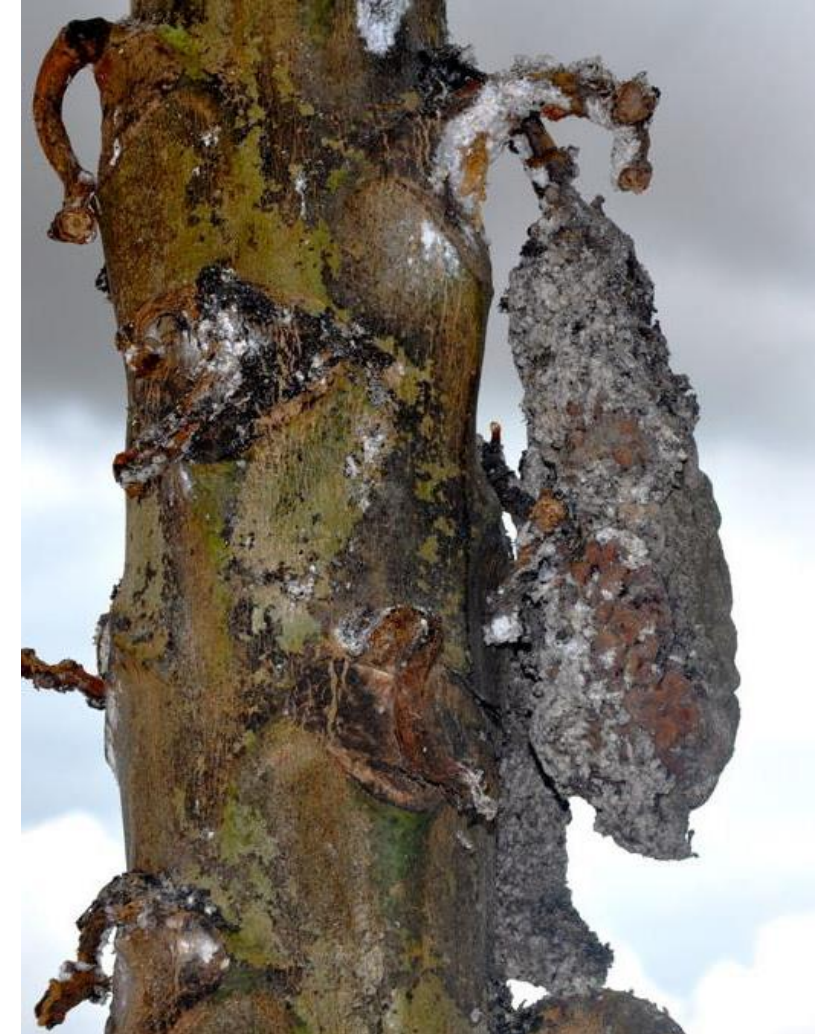
Bolstering **farmer advisory** approaches with a wider intervention scope, including training and digital tools for plant doctors, agro-input dealers and other agricultural service providers, to increase the number of knowledgeable plant health advisers within reach of smallholder farmers



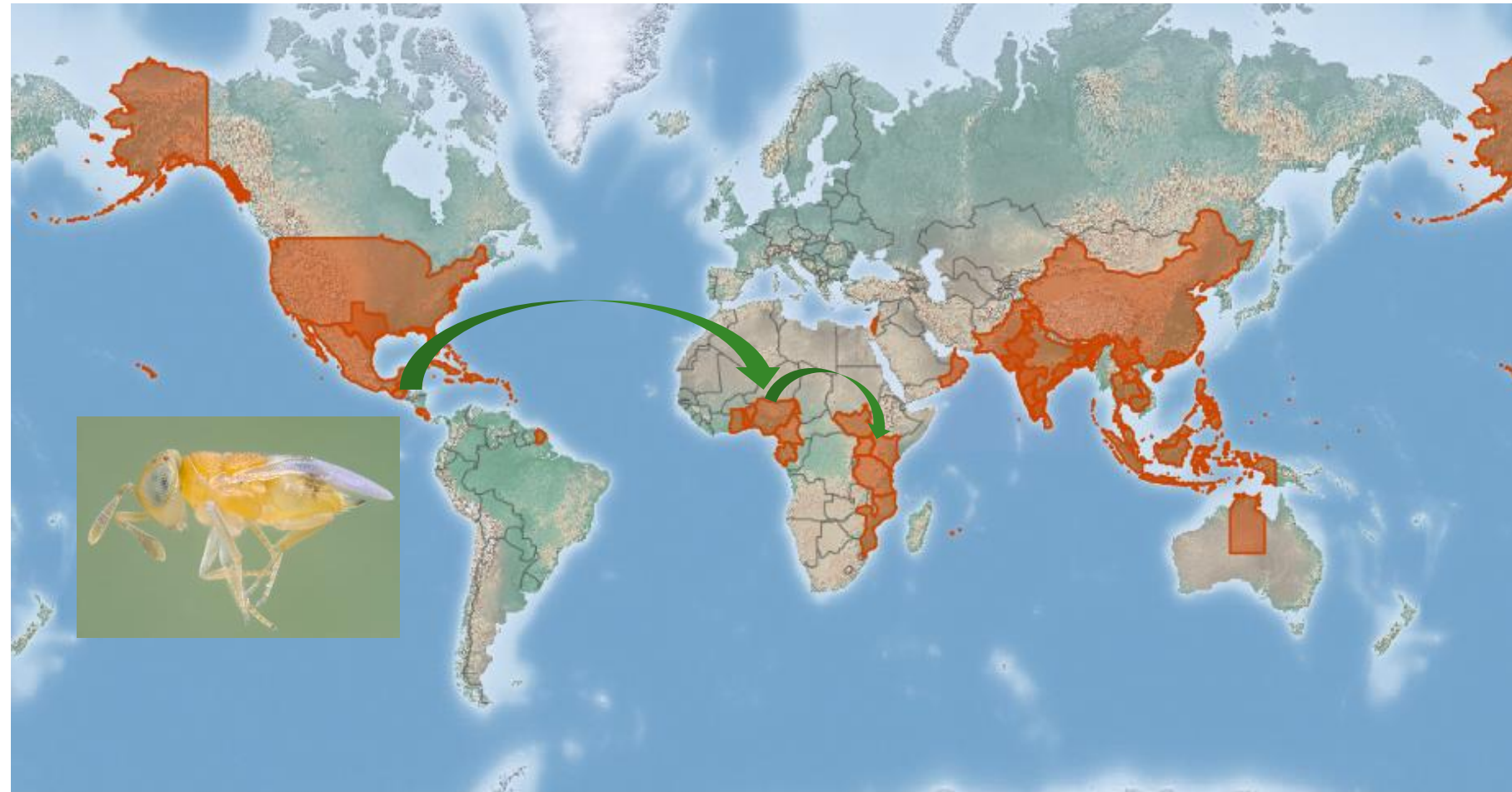
Papaya Mealybug (PMB) biocontrol – Kenya

Damage caused by PMB

- PMB infestation caused annual economic losses of about US\$30 million in Kenya in 2019 (CABI study)
- Yield losses of between 57% and 91% and household economic losses of US\$3000/ha annually in affected areas (CABI study)
- Decrease of +30% in area harvested from 2017 to 2023 in Kenya (FAOstat)



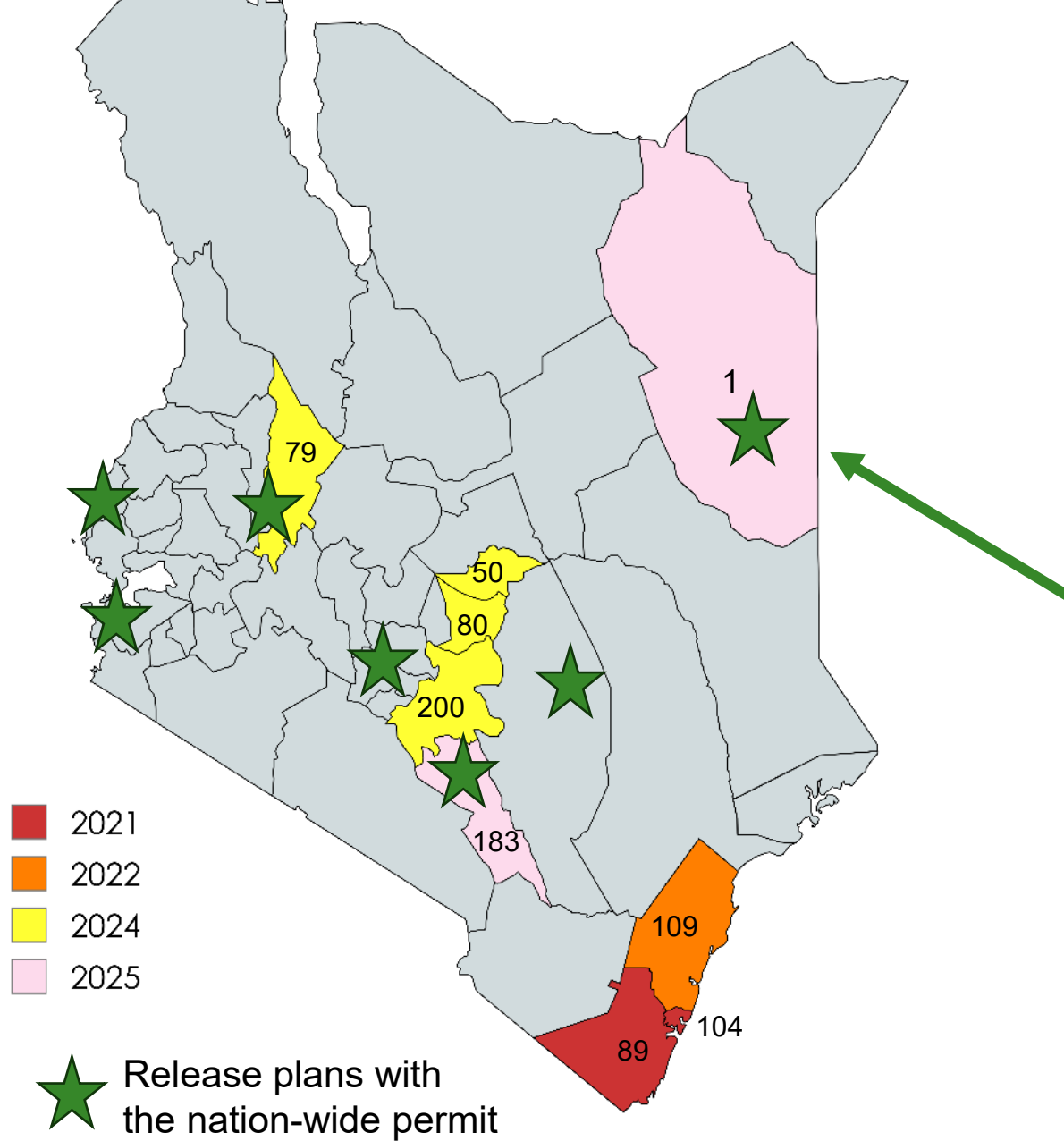
Classical biological control using a natural enemy from the native range of the papaya mealybug



CABI, 2025. *Paracoccus marginatus*. In: CABI Compendium. Wallingford, UK: CAB International.

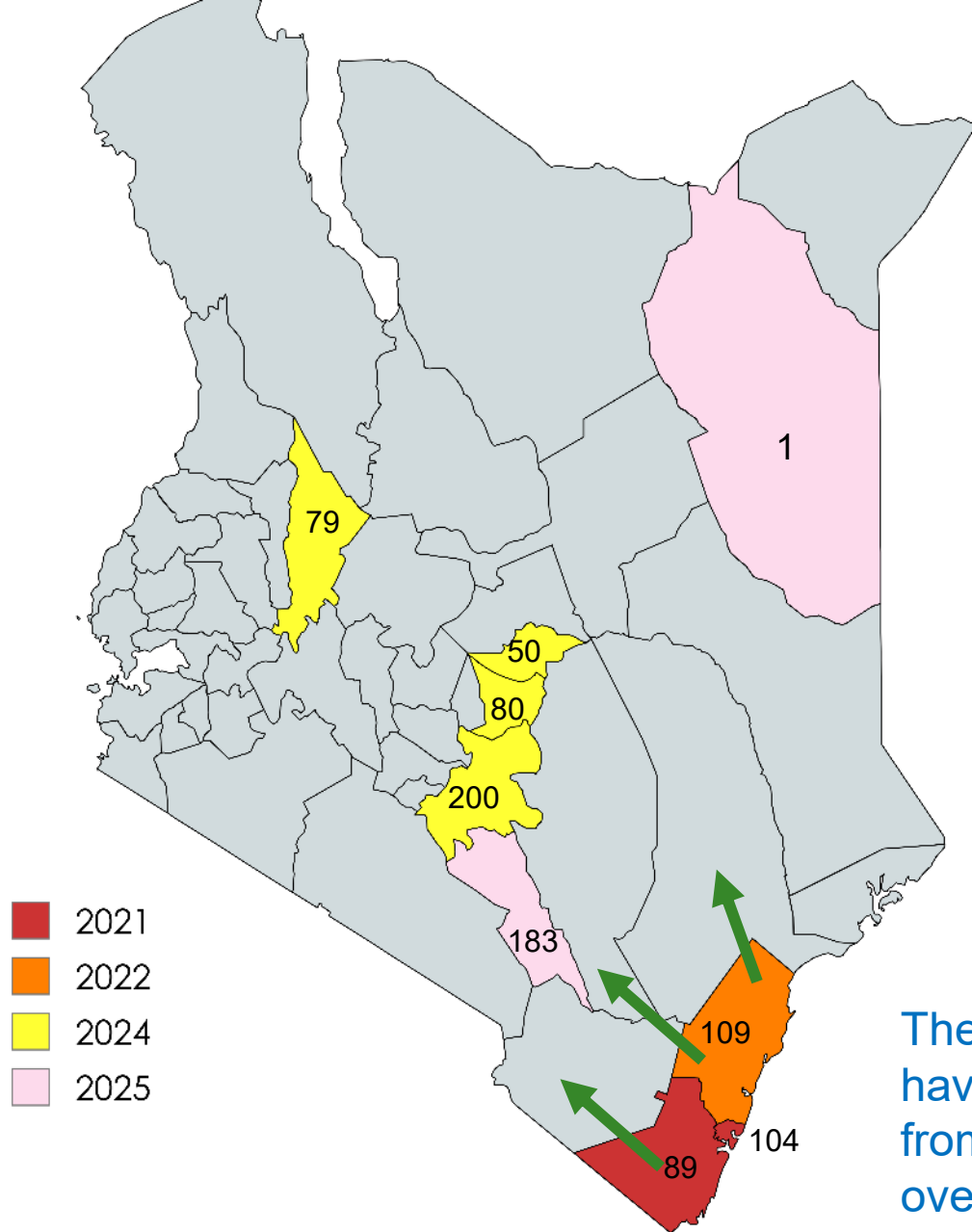
● CABI Summary Data

Government approval for nation-wide permit received in late 2024

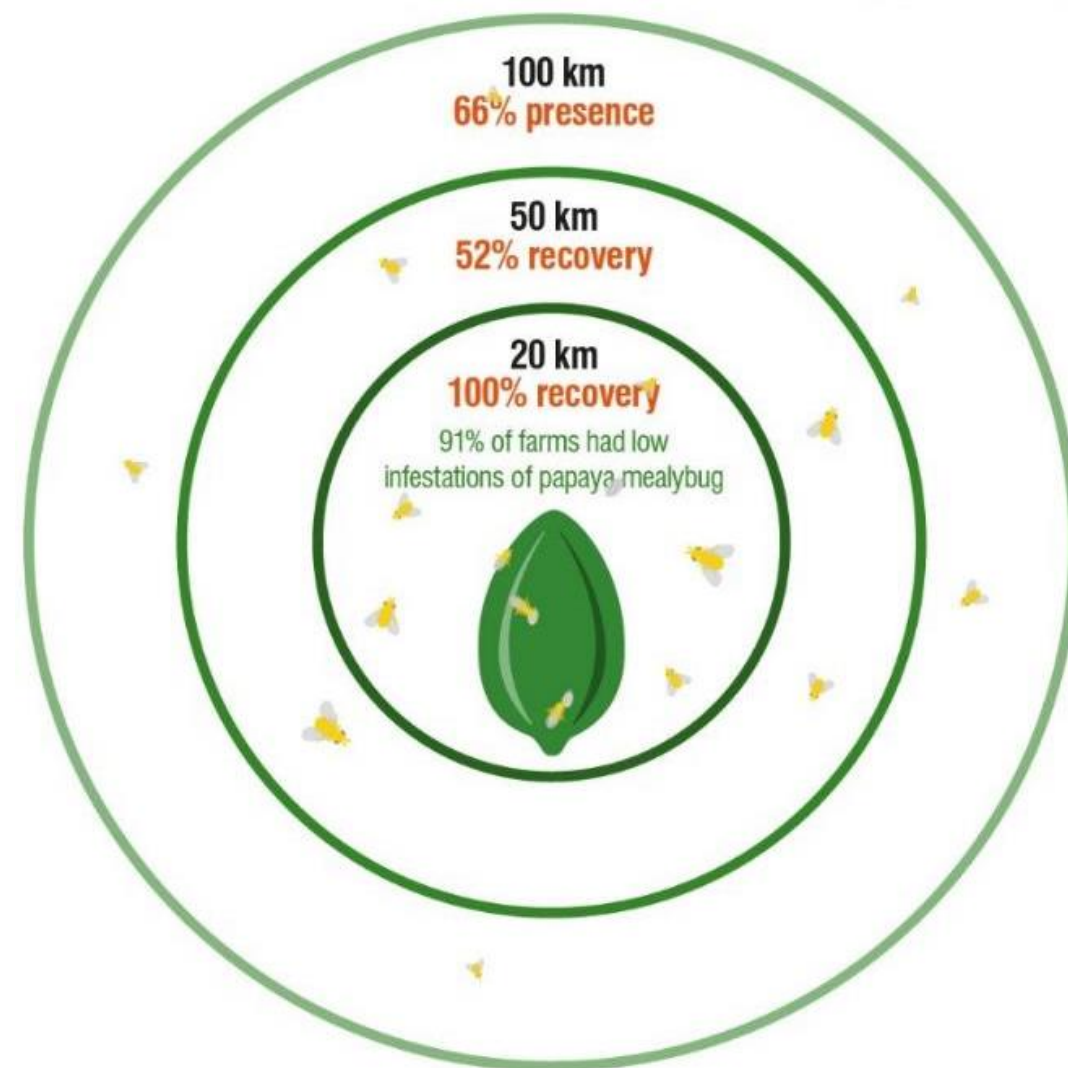


Created with mapchart.net

Study in Sept 2024 showed **fast spread** of the agent from release sites in coastal counties



The biocontrol agents have spread >150 km from the release sites over 3 years



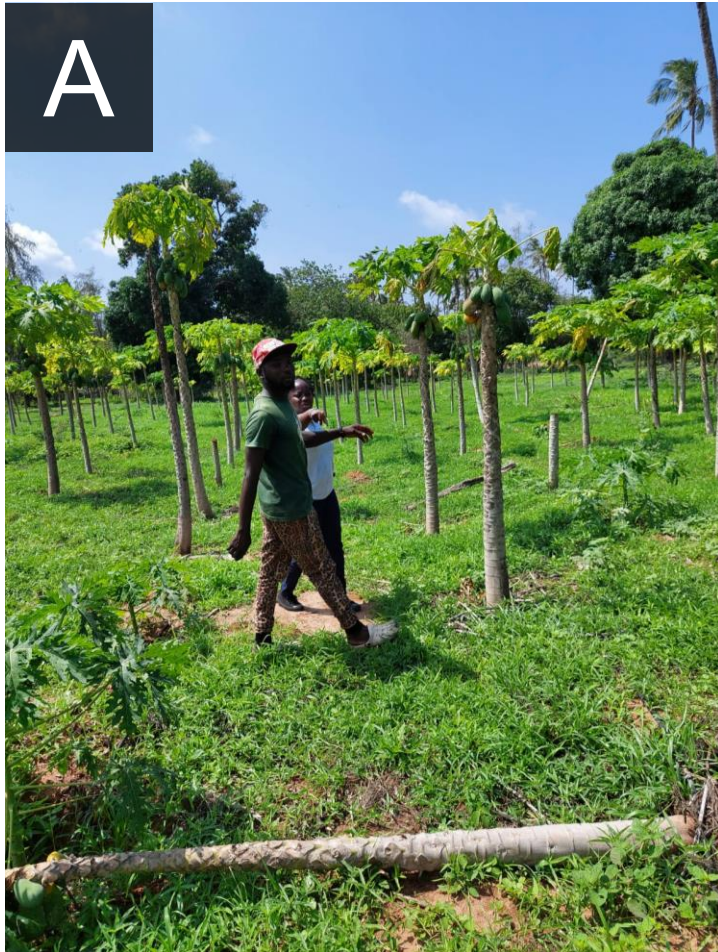


Impact of papaya mealybug biocontrol

Just a few months after releases in both Kenya we observed:

- High parasitism, sometimes over 70%
- Low or no papaya mealybug infestations at both release sites and neighbouring sites.
- Most farmers discontinued the use of pesticides on PMB
- Former papaya farmers returned to the trade after periods of PMB-induced abandonment.
- A high number of other natural enemies, including predators have been observed at release sites and non-release sites following withdrawal of the pesticides.

Example of restored papaya farm



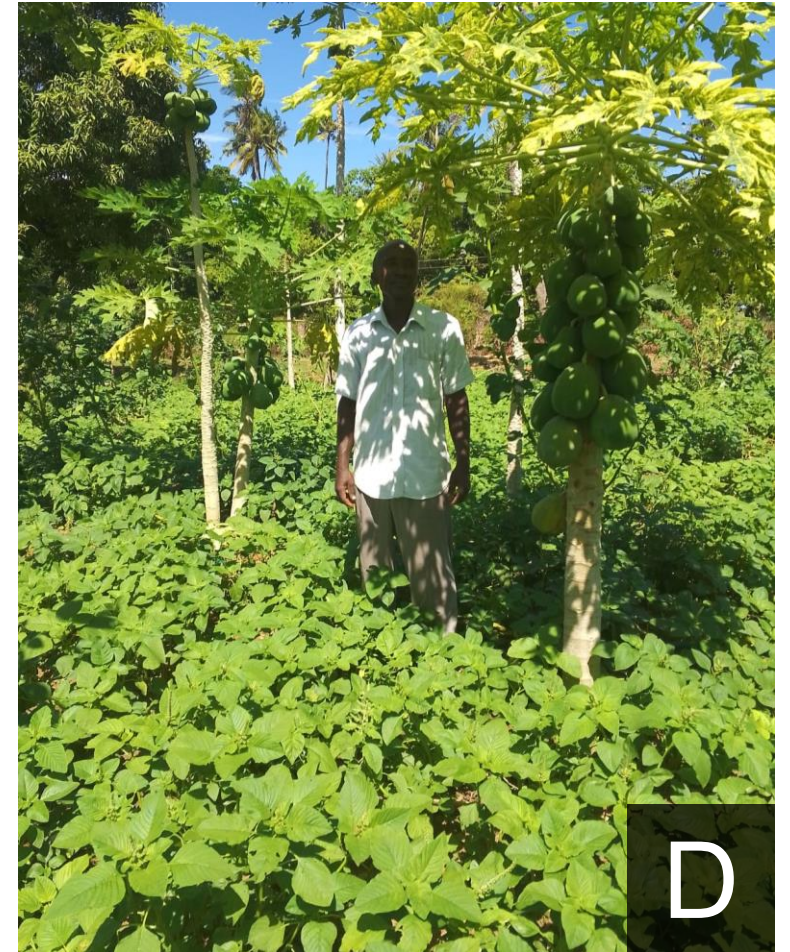
(A) May 2022



(B) July 2022



(C) Dec 2022



(D) March 2025



Gender Technical Working Groups – Pakistan



GTWG purpose and focus

The Gender Technical Working Group (GTWG) serves as a platform to:

- Identify **barriers to gender equity** in technical and social sectors
- Develop **inclusive, gender-responsive strategies** at all levels
- **Promote learning** through training, knowledge sharing, and capacity building
- Advocate for **gender mainstreaming** in technical practices and policies

Includes work on:

- Livelihoods
- Skills development
- Policy review
- Gender inclusivity in extension services
- Climate and youth engagement



GTWG – achievements

Work of the Departments of Agriculture Extension in four provinces through the GTWG has resulted in:

- Gender sensitization of staff resulting in the departmental environment became more suitable for women staff
- Gender considerations integrated into project planning proposals processes
- Sex disaggregated data is captured at the department level
- Women and youth farmers registered and engaged with the department
- Extension staff now develop and implement gender-inclusive field plans.
- Capacity enhanced for gender-sensitive and inclusive work at the community level
- GTWG networks formally strengthened for sustained collaboration.

Results and impact in 2024-25

Activity	Women	Men
Cadre of Gender Master Trainers developed in KPK, Sindh & Punjab	91	110
Women / youth farmers trained	360	
Exposure visits for TWG members	7	10
Plant doctors linked with women/ youth farmers	140	79
Women farmers registered with department in all provinces	Approx. 300,000	



Results and Impact – 2024-25

- Reserved seats for female field assistants at the Agriculture Services Academy to enhance female participation in agriculture extension services.
- Capacity development initiatives for female officers to enable them to lead awareness campaigns, particularly focusing on school and college girls.
- Specialized training programs to strengthen skills in managing post-harvest losses, effective pesticides storage methods, and preserving grains, fruits, and vegetables.
- Formal inclusion of women farmers in the Model Farm Services in KPK for the first time.

Results and Impact..

- Increased participation of women and youth in agriculture extension programme.
- Over 70,000 women farmers and agricultural women labourers registered in KPK, under food security work.
- More than 80,000 women farmers registered under the Prime Minister Farmer Card programme in Sindh
- In Punjab 150,000 women registered under the Prime Minister Farmer Card programme
- As direct result of these initiatives women gained improved access to government subsidies, credit facilities.
- Inclusion in formal systems of enhanced land tenure security, and recognition of women's roles in agriculture.





Impact of Gender Sensitisation

“The establishment of separate offices for female agriculture officers at both the Headquarters has **greatly improved our working environment**. Additionally, the provision of separate toilets for female staff has **enhanced our comfort and dignity at the workplace**.

These changes reflect a **strong commitment** to gender-sensitive infrastructure and have positively impacted our **productivity and morale**.”

(Dr. Shawana Khan Khel – Deputy Director)

“After the gender training, I felt more **confident and empowered**. I also gained **valuable knowledge** that helped me better understand gender issues and **how to address them** in my community.”

(Pari Gul – farmer, Ghulam Banda village)

Future plans



Women farmers further registered with the social protection department through ILO (equal enumeration, contracts, health etc)



Institutionalization of the GTWG network within the National Coordination mechanism.



All members, through project planning processes, to ensure 25 percent women farmers are to be registered through their projects proposals.



CABI PlantwisePlus

Plan...
Supp...
farme...
and hi...

Agro-input dealer training – Uganda

Agro-input dealers: PlantwisePlus & Uganda

- Agro-input dealers have the potential to be a vital source of information on pesticides and pest management for farmers.
- However, they often limited in the technical knowledge and skills needed to provide appropriate advice, e.g.:
 - Limited awareness of pesticide risks
 - Limited awareness of integrated pest management and lower-risk alternatives





Development & validation of training module

- New module focused on lower-risk plant protection products was jointly developed using a blended approach to training
- A more interactive/participatory approach:
 - Reference material is visually engaging
 - Training curriculum involves a range of training materials eg video, PPT, group activities, discussions
 - Includes digital resources such as the CABI BioProtection Portal, launched earlier with MAAIF collaboration



Training & indications of behavioural change

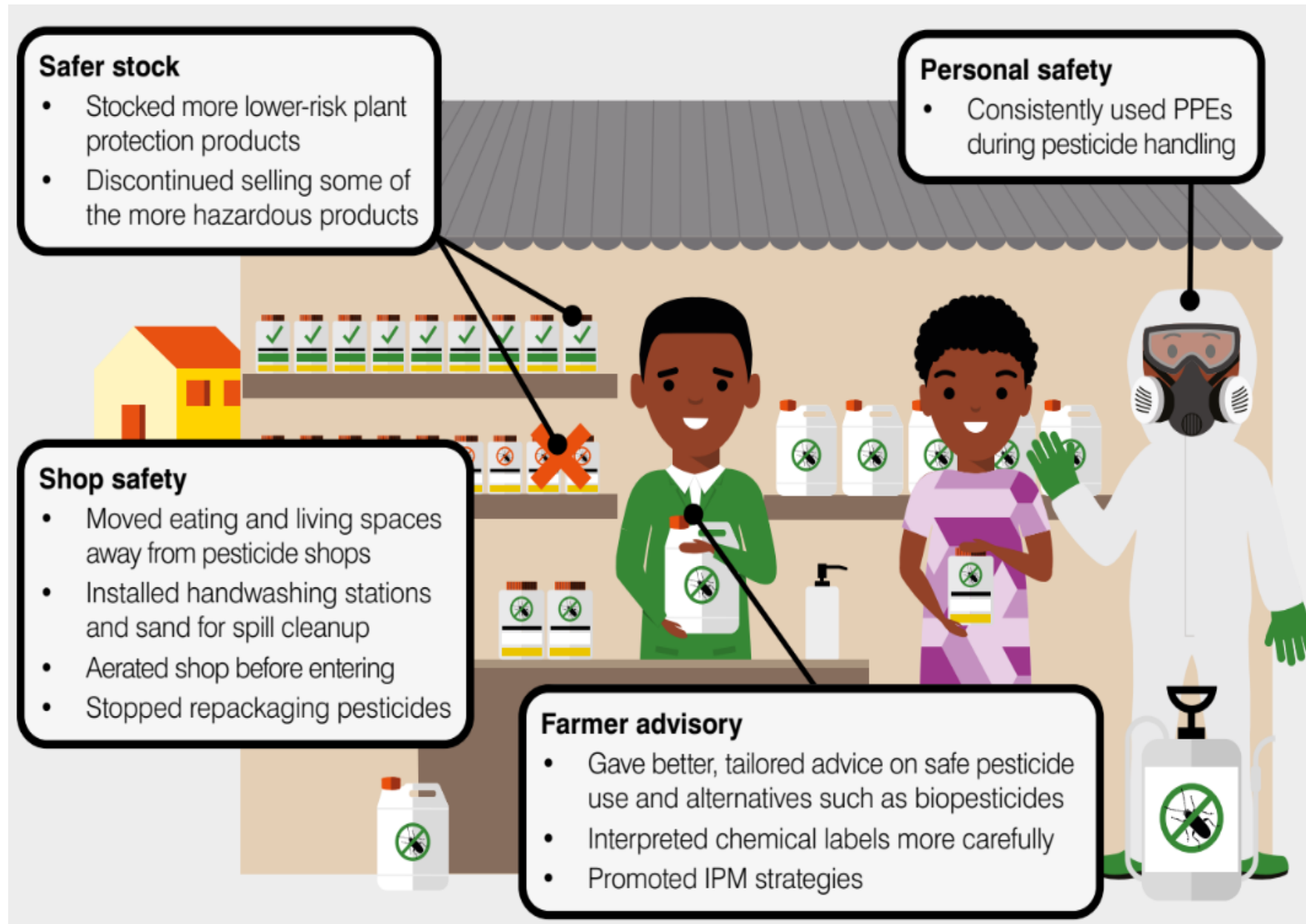
- MAAIF Inspectors implemented training of the Responsible Use of Agricultural Chemicals course incorporating the lower-risk plant protection module



Early results

Feedback gathered from AIDs trained and certified in 2024:

- Behavioural changes were identified that directly improved health & safety of the AIDs
- AIDs were providing farmers with better quality information and lower-risk products, which will significantly reduce harm to farmers, consumers and the environment





Way forward in 2025

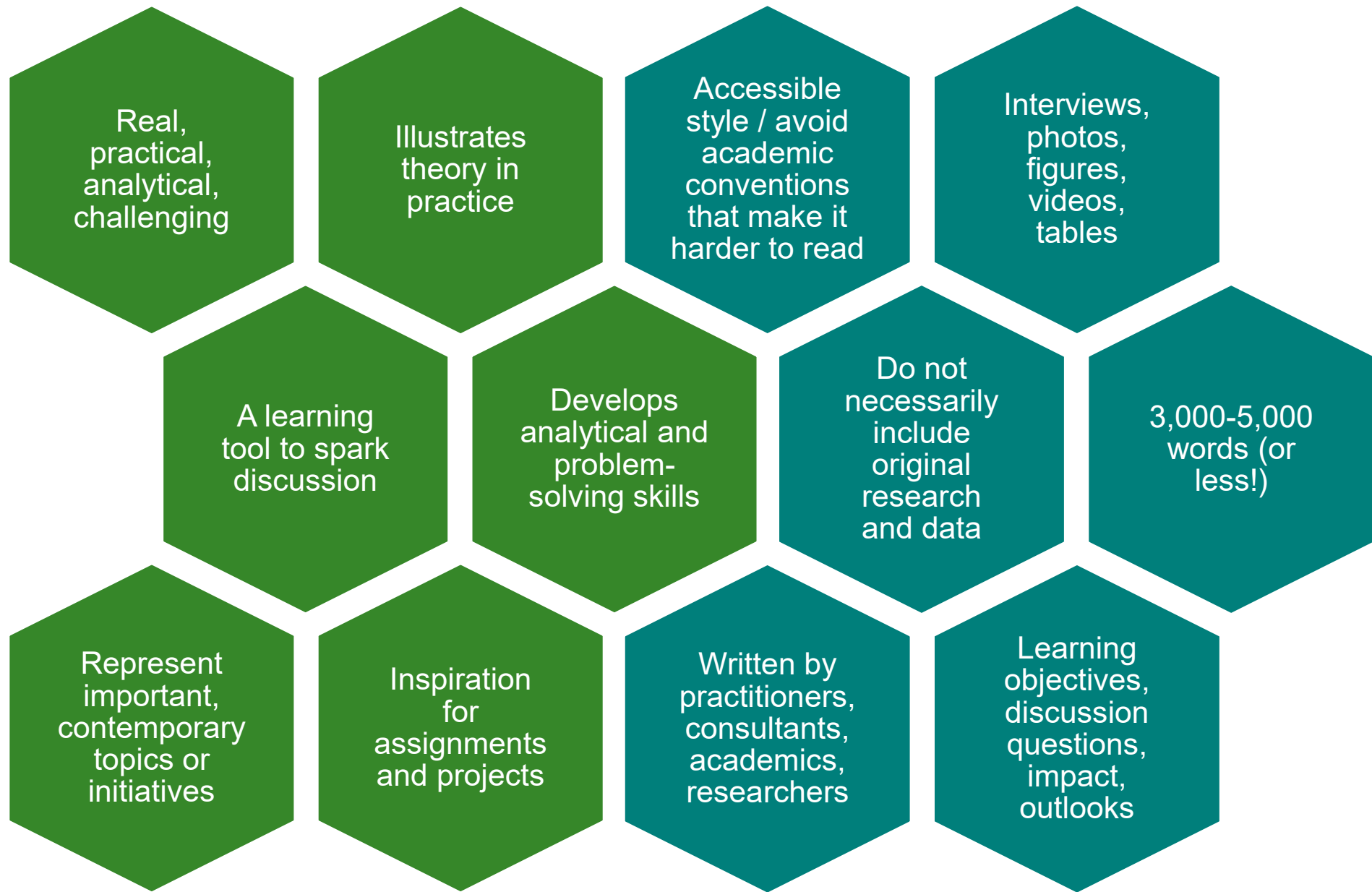
- MAAIF requested PlantwisePlus to support development of a new training curriculum (given there was no structure to follow in previous training and to now add the component that was introduced earlier), utilizing the blended training approach
- MAAIF, Makerere University and CABI are now in the process of developing the training curriculum and associated training materials
- This improved training will be applied in all agro-input dealer trainings going forward

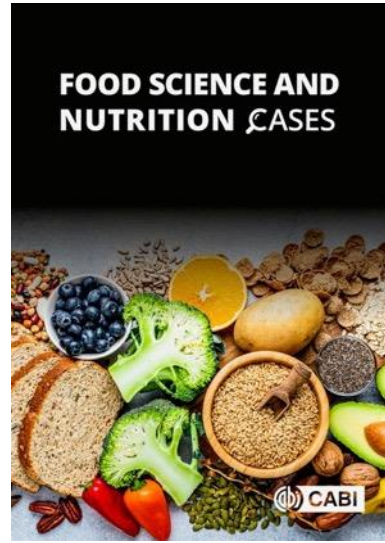
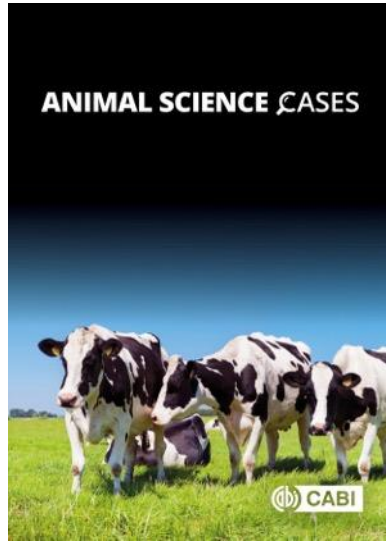
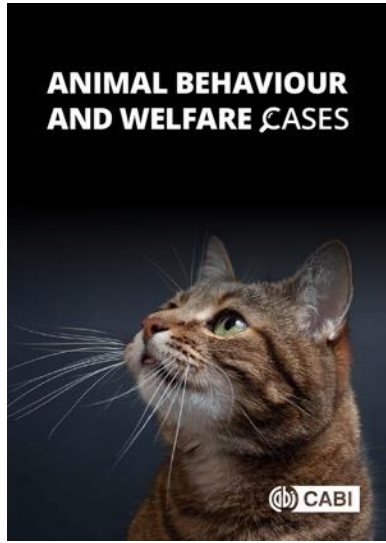
CABI Cases

Claire Jackson

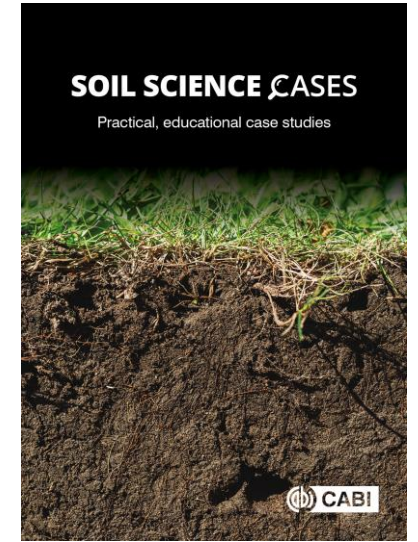
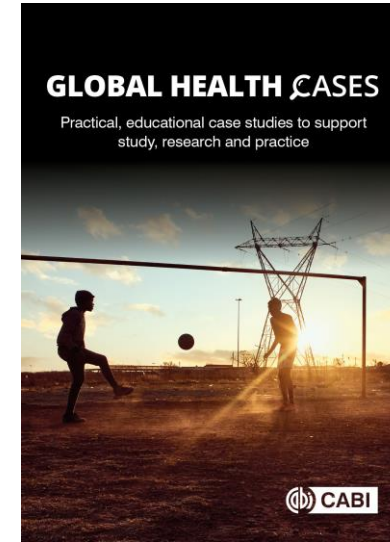
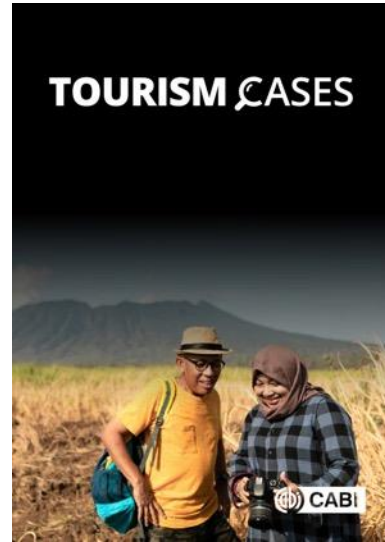
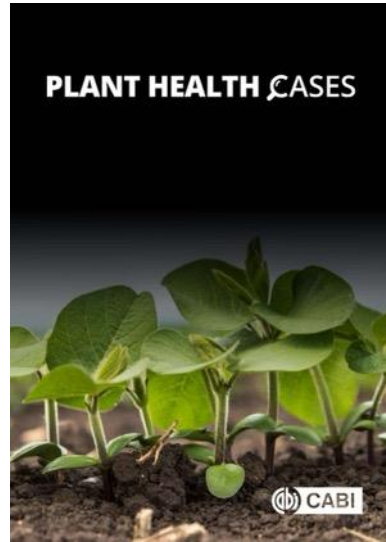
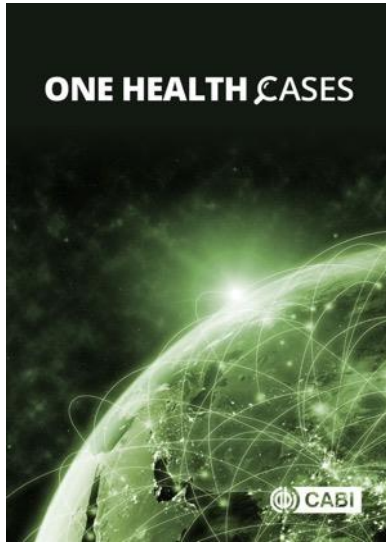


3rd July 2025





New in 2025

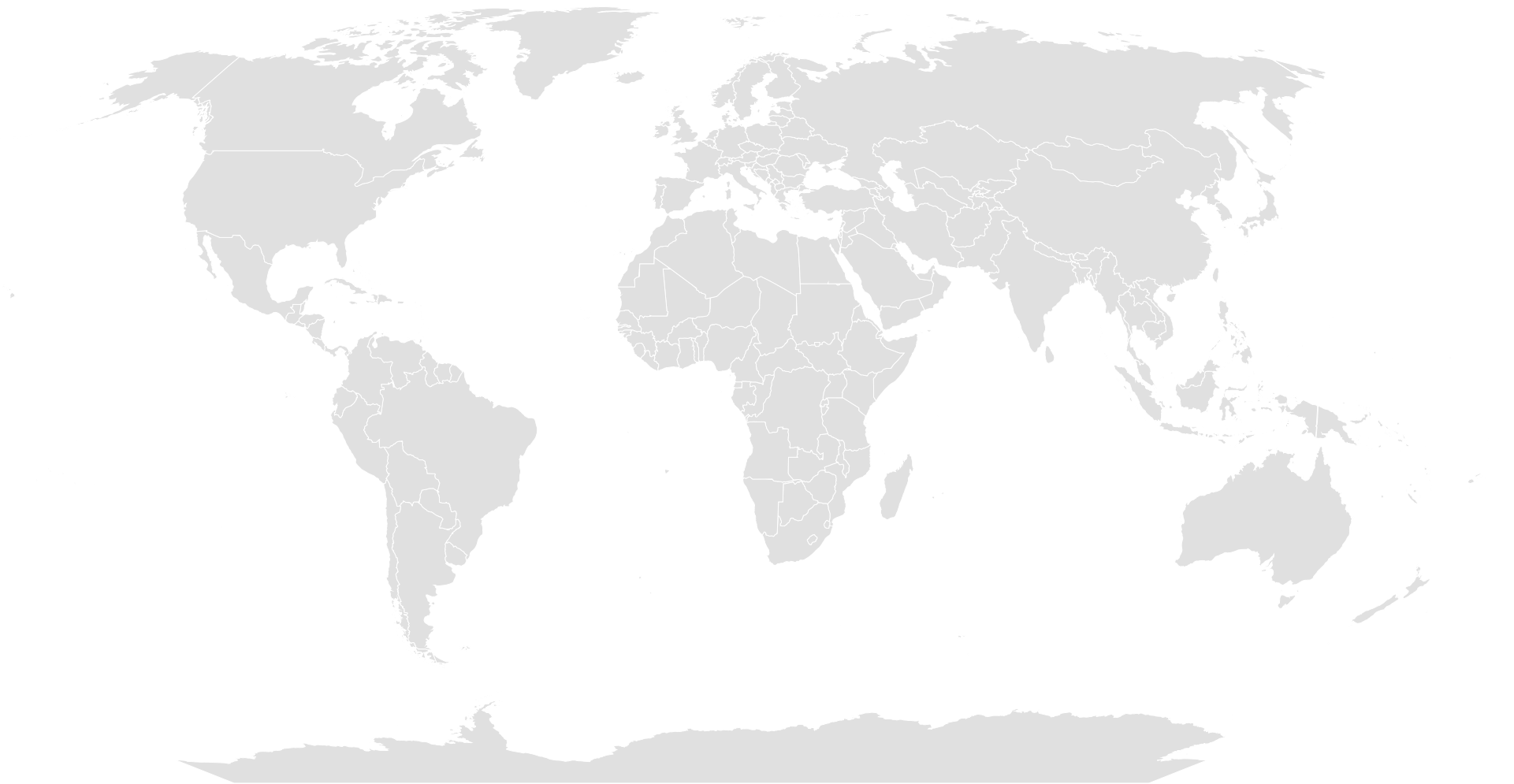


Value to Member Countries

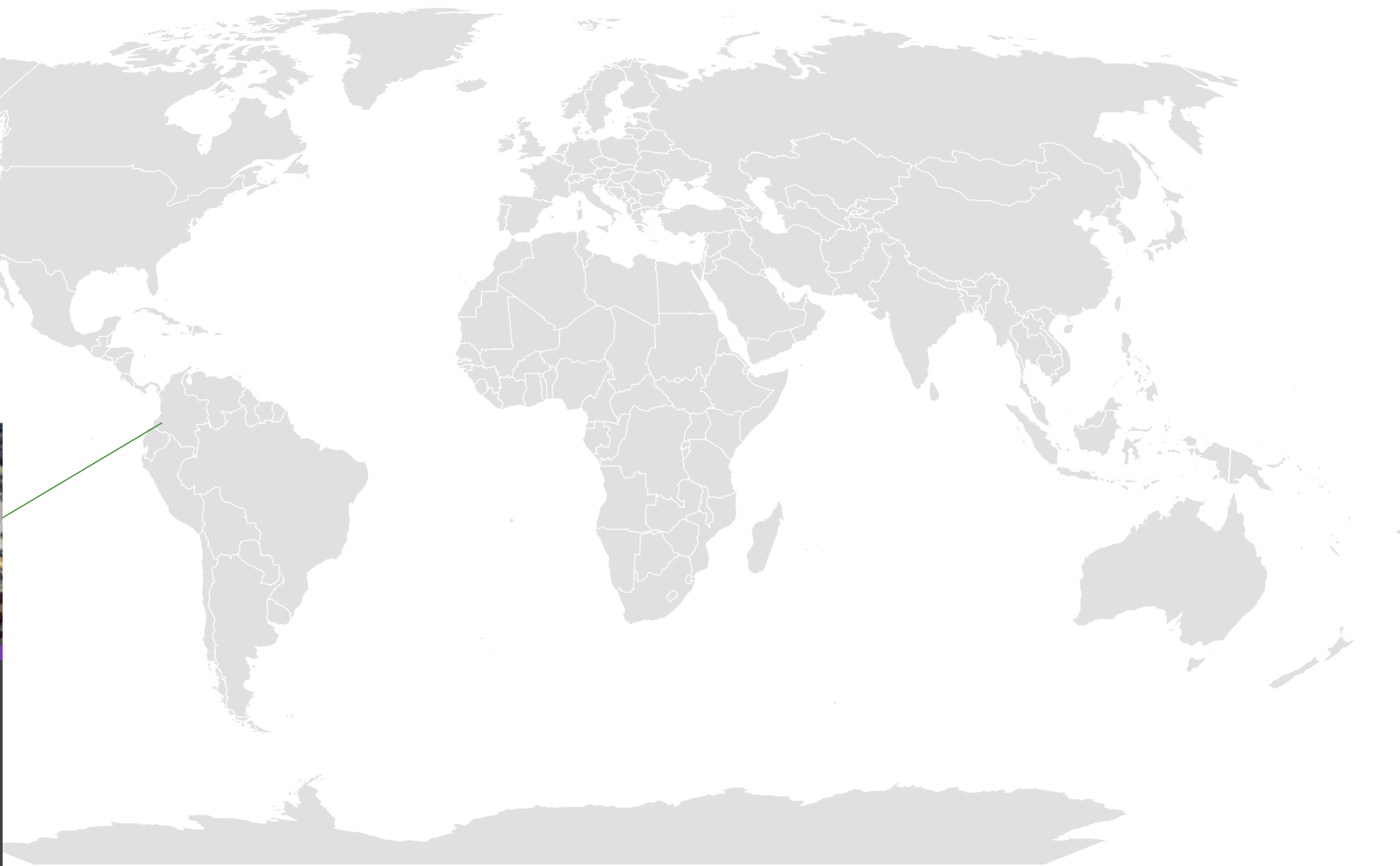
Impact beyond traditional publication methods

Global reach

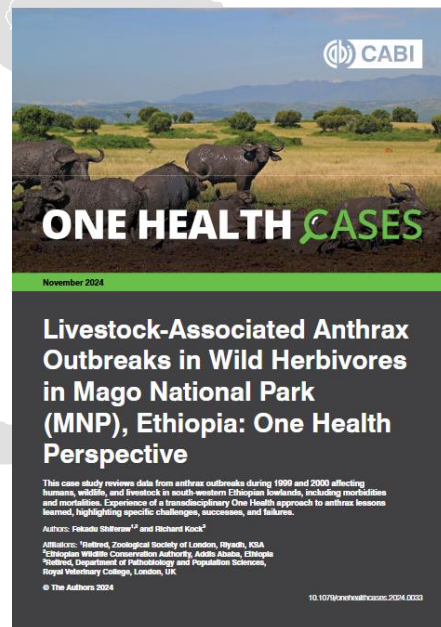
Educational value



© Australian Bureau of Statistics, GeoNames, Microsoft, Navinfo, Open Places, OpenStreetMap, Overture Maps Foundation, TomTom, Zenrin
Powered by Bing



Powered by Bing
© Australian Bureau of Statistics, GeoNames, Microsoft, Navinfo, Open Places, OpenStreetMap, Overture Maps Foundation, TomTom, Zenrin



Powered by Bing
© Australian Bureau of Statistics, GeoNames, Microsoft, Navinfo, Open Places, OpenStreetMap, Overture Maps Foundation, TomTom, Zenrin



ANIMAL SCIENCE CASES


October 2024

Sustainable Insect Farming: A System and One Health Approach for Effective Management

This document outlines strategies for sustainable insect farming, highlighting benefits and risks associated with humans, animals, and environmental health. It addresses methods for integrating insect farming into circular food systems to contribute to fulfilling Sustainable Development Goals. Additionally, it offers context-specific recommendations for maximizing both the efficiency and sustainability of insect farming.

Author: Karel B. Barragán-Fonseca
Affiliation: Associate Professor, Faculty of Veterinary Medicine and Animal Sciences, Universidad Nacional de Colombia, Sede Bogotá, Bogotá, Colombia
 © The Author 2024

DOI: 10.1017/animalhealthcases.2024.0003



ONE HEALTH CASES

November 2024

Livestock-Associated Anthrax Outbreaks in Wild Herbivores in Mago National Park (MNP), Ethiopia: One Health Perspective

This case study reviews data from anthrax outbreaks during 1999 and 2000 affecting humans, wildlife, and livestock in south-western Ethiopian lowlands, including morbidity and mortality. Experience of a transdisciplinary One Health approach to anthrax lessons learned, highlighting specific challenges, successes, and failures.

Authors: Eskedar Shiferaw^{1,2} and Richard Kock³
Affiliations: ¹Bethel, Zoological Society of London, Riyadh, KSA
²Ethiopian Wildlife Conservation Authority, Addis Ababa, Ethiopia
³Refugia, Department of Pathobiology and Population Sciences, Royal Veterinary College, London, UK
 © The Authors 2024

DOI: 10.1017/onehealthcases.2024.0022



FOOD SCIENCE AND NUTRITION CASES

December 2024

Advancements in Bioactive Intelligent Packaging: Enhancing Food Safety and Sustainability

This case study discusses advancements in bioactive materials for intelligent food packaging indicators, emphasizing the importance of food safety and quality in the context of global challenges such as climate change and foodborne diseases. The study explores the use of natural bioactive compounds, such as anthocyanins and betalains, as additives that provide antioxidant and antimicrobial properties, improving the stability and functionality of packaging systems. The findings suggest that intelligent packaging can significantly contribute to sustainability in the food industry by reducing waste and enhancing consumer safety.

Author: Farah Ayant Mohd Hatta
Affiliation: Institut Islamiah Hadramut, Universiti Kebangsaan Malaysia, Bangi, Malaysia
 © The Author 2024

DOI: 10.1017/foodsciencecases.2024.0019

Powered by Bing
 © Australian Bureau of Statistics, GeoNames, Microsoft, Navinfo, Open Places, OpenStreetMap, Overture Maps Foundation, TomTom, Zenrin

Why write a case study?

Demonstrate impact, spread the word

- Reach new audiences with your research
- Showcase real-world initiatives in your region

Faster to write than a research article

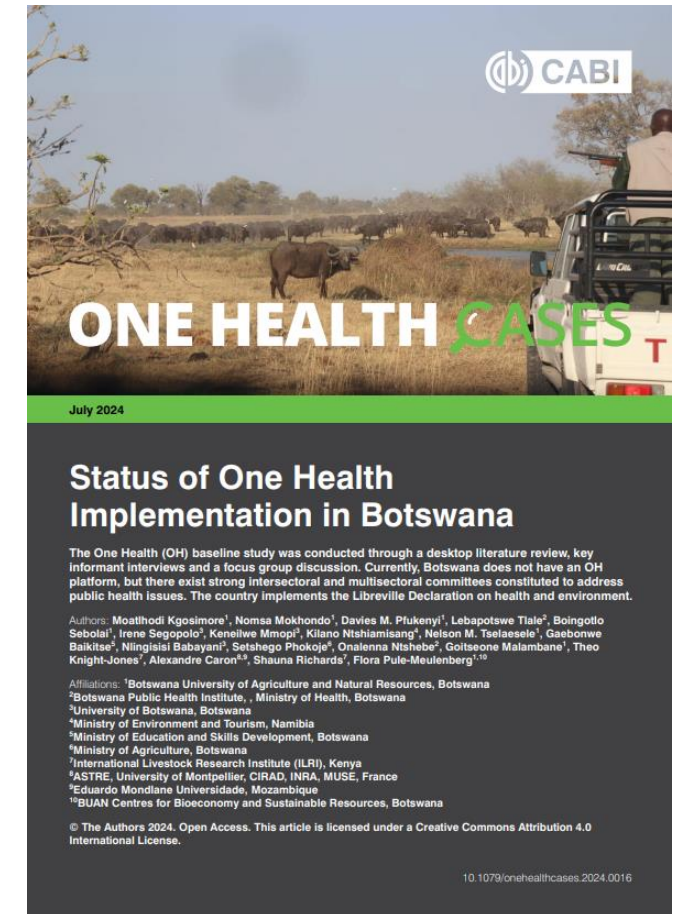
- 2,000-4,000 words following a template
- Enriched with illustrations, photos and videos
- Accessible writing style, author services available

Broad in scope

- Do not have to be original research - repurpose existing materials or reports
- Incremental advances, failed initiatives or replication which are educationally valuable

Additional benefits

- Authors receive £100 per published standard case study



How to submit

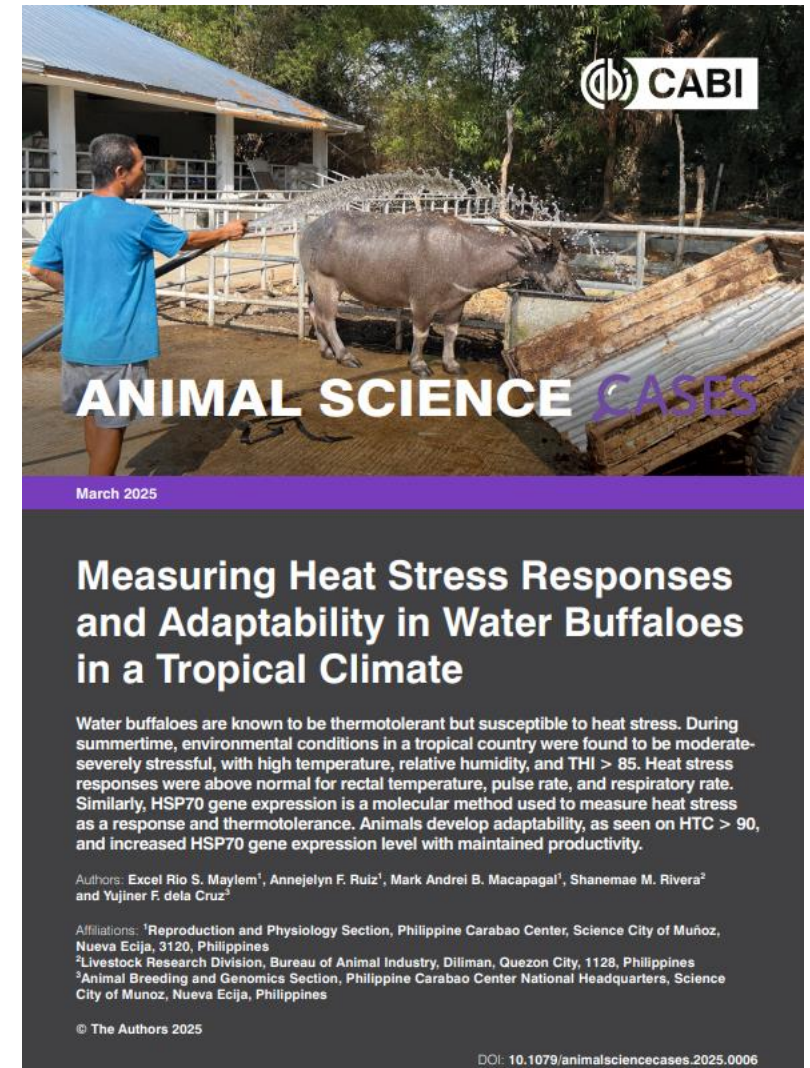
Not sure if your work would make a good case? Get in touch!

Visit the site for the relevant product to see:

- Templates
- Submission instructions
- Sample cases

<https://www.cabidigitallibrary.org/cases>

Email: c.jackson@cabi.org





SciDev.Net Training

Charles Wendo



Writing an Effective Policy Brief from Your Research

Target group:

- Researchers and research administrators in CABI member countries.

Benefits:

- Learn how to distil complex research into clear, concise messages that appeal to policymakers.
- Gain practical skills for structuring and writing compelling policy briefs.
- Increase the chances of your research influencing policy and practice.

Training approach: Webinar, practical guide, and 1-on-1 feedback on policy briefs.

Webinar date: 24 September 2025. **Time:** 12:00–1:00 pm BST.

Finance Update



Leonard Kimutai



Financial Update - YTD April 2025

£ '000'	Revenue					Surplus			
	Actual	PY	Growth vs. PY %	Budget	Var vs. Budget %	Actual	PY	Budget	Var vs. Budget
Knowledge Business	4,406	3,422	29%	4,728	(7%)	1,355	1,030	1,275	80
International Development	6,810	6,884	(1)%	9,663	(30%)	(742)	(311)	191	(933)
Corporate & Central Departments	1,440	1,390	4%	1,439	0%	(1,925)	(1,344)	(1,918)	(7)
Total	12,656	11,696	8%	15,831	(20%)	(1,312)	(626)	(452)	(860)

- **Knowledge Business** achieved a substantial 29% YoY growth. This performance was driven by a quadrupling of project income mainly from JUNO, high growth from Compendia (28%) and books (16%). Consequently, the surplus for this segment grew by 32% over the previous year and surpassed the budgetary projections by 6%.
- **International Development** remained flat compared to the prior year and fell short of the budget by 30%. This performance was largely driven by challenges in project funding.
- **Corporate & Central Departments** performance is in line with budget projections.

Despite year-on-year growth, we are behind budgeted growth which resulted in expanded deficit as our surplus is highly sensitive to fluctuations in revenue.

Outlook 2025

Net Revenue forecast

- The growth in income in 2022, 2023 and 2024 is expected to be repeated in 2025, underpinned by growth in Publishing products and translation of project funds from the successful fundraising in 2024.
- However, the growth is expected to land at a low double-digit number (10-11%) which falls short of budget (22%) due to a profound shift in donor priorities and spending.

Contingency Measures

- To mitigate the impact of the risks of revenue shortfalls, management has taken and continues to take several contingency measures including:
 - Revenue diversification
 - Reduction of variable costs
 - Zero salary increases in 2025
 - Generation and preservation of cash
- We continue to closely monitor our key risks (shortfall in funding for projects; pressure on publishing products and cost rises from inflation) and will act accordingly to secure our financial position.



Notable Developments

- **New Finance System launched** - We have successfully launched our new finance and business system, CABI Connect. The new system has the capacity to give better quality management information, enhancing data driven decisions and internal efficiencies.
- **UK Science Centre move on track** - The move of our UK Centre from Egham to Silwood Park remains on track for July and within budget. New facility designed to meet CABI's future needs and unlock new opportunities from collaboration with Imperial College.
- **UK Pension Scheme obligations met** – We continue to meet our monthly obligations as per the new recovery plan.

Closing Comments & Discussion



Daniel Elger



Updates on CABI Executive Management Team



Dr Dennis Rangi
Director General
for Development



Mr Neil MacIntosh
Chief People Officer

Due to retire end of Q1 2026

شكرا جزيلًا
mercì
zi koma
xie-xie
obrigado
efharistó
شكريه
asante
ke itumetse
dhanyawaad
tak
terima kasih
urakoze
Amesegnalehu
kiitos
danke
gracias
thank you

CABI as an international intergovernmental not-for-profit organization, gratefully acknowledges the generous support received from our many donors, sponsors and partners. In particular we thank our Member Countries for their vital financial and strategic contributions.