



CABI Quarterly Update

Member Country Briefing

January 23 2025

Today's agenda



Introduction & 2024 Achievements – Daniel Elger



CABI in the News 2024 – Carol McNamara



Landscapes Initiative – Phyllis Engefu Ombonyo



Global Burden of Crop Loss – Cambria Finegold



PRISE – Charlotte Day



Finance Update, Pension Scheme update – Leonard Kimutai



The Year Ahead – Daniel Elger

Reviewing our 2024 priorities



Deliver on second-year Medium-Term Strategy targets



Engage Member Countries to deliver MTS and Action Plans

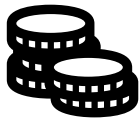


Deliver an expanded International Development portfolio

- PlantwisePlus scale-up phase
- Landscape Initiative



Build on opportunities from CABI Digital Library



Meet Pension Scheme recovery plan obligations



Other key developments

Extensive Member Country engagement

Central African Republic approved to become a member

Record funding wins totalling >£70m for future work

Continuing investment to expand CABI's team, reach and capabilities

Significant expansion in work on evidence for policy

Conclusion of plans for UK Centre move to Imperial site

Increased engagement in climate and biodiversity 'COPs'

→ Impact supported by growth in CABI team and funding

CABI in the news



Carol McNamara



A woman stands in a field, looking off to the side. She is wearing a blue t-shirt with a logo and a long, patterned skirt. She holds a wooden hoe. The background shows a line of trees under a cloudy sky.

**2024 saw further
progress in
developing
communications
systems that
reach and engage
with our
stakeholders**

Great performance across CABI channels and platforms



CABI sites page views (31m)



Blogs & news posts written (233)



CABI campaign emails sent (440)
– click through rate grown from 2% to 4% average



Conferences organised (34)



Webinars produced (CABI only)

158 average attendance, 99% of attendees found webinars useful



Webinars produced (SciDev.Net/Script series)

725 attendees across series from 79 countries, additional video views 1,300

Event highlights in 2024	🌐	📅
ICT for Development	Ghana	March
Africa Fertilizer and Soil Health Summit	Kenya	May
Innovation in Agriculture	Swiss Embassy UK	May
Meetings of Agricultural Chief Scientists of G20	Brazil	May
3rd International Congress of Biological Control	Costa Rica	June
Crawford Fund Conference 2024	Australia	Aug
Africa Food Systems Forum	Rwanda	Sept
8th World One Health Congress	South Africa	Oct
COP-16 (Biodiversity)	Colombia	Oct-Nov
COP-29 (Climate)	Azerbaijan	Nov
4 Webinars on biopesticides Caribbean Member Countries		2024



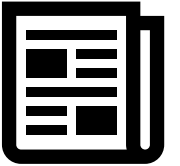
CABI Media Coverage 2024



1,306 pieces of global online and broadcast coverage
with an estimated reach of over 142 million



CABI Media Coverage 2024

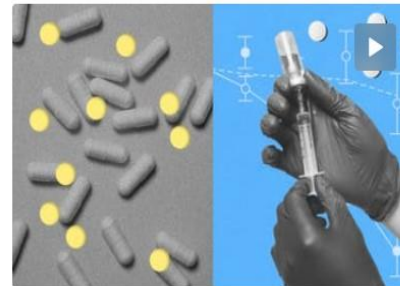


Latest articles

PREP TALK

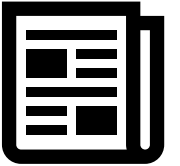
From once a day to twice a year

Long-acting preventatives will save more lives from HIV/AIDS.



Dora Shimbwambwa featured as Bill Gates's 'Heroes in the Field' video on YouTube with 880K views

CABI Media Coverage 2024



Pakistan OBSERVER Tuesday, January 14, 2025

Top News Pakistan Business Sports World Lifestyle Technology CPEC Article Kashmir Daily Cartoon Forex Rate E-Paper

Home > Business > Aflatoxin control is key to boosting Pakistan's agricultural exports: Kauser

Aflatoxin control is key to boosting Pakistan's agricultural exports: Kauser

by News desk January 25, 2024 in Business

Dialogue on Regulatory Harmonization in Pakistan for MRLs and Biopesticides

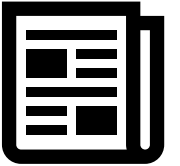
A significant dialogue on regulatory harmonization in Pakistan for Maximum Residue Levels (MRLs) and Bio-pesticides was held, aiming to improve food safety standards in the country. The event brought together four major partners, United States Department of Agriculture (USDA), Centre for Agriculture and Bioscience International (CABI), Pakistan Agricultural Research Council (PARC), and representatives from the private sector specially Rafhan Maize Product Co. Ltd. The primary focus of the dialogue was to facilitate the availability and regulation for Aflatoxin biological control technology for maize, which had demonstrated promising results in field trials.

RECOMMENDED

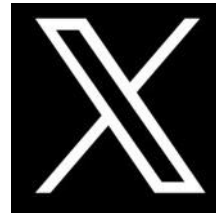
- Pakistan Strike Force camp kicks off in Lahore ahead of Champions Trophy 2025
- Ihsanullah Khan announces retirement as protest after being overlooked in PSL 10
- CM Murad writes letter to PM, expresses concerns for neglecting Sindh Motorways projects
- Differences should be resolved soon as negotiations are underway: Barrister Gohar
- Saw judges falling ill, trembling during trials: Bushra Bibi

Regulatory harmonization in Pakistan of Maximum Residue Levels and biopesticides covered by media including Pakistan Observer, Nation and Daily Independent

CABI Media Coverage 2024



Strong year for social media promotion of CABI's work across X (formerly Twitter), Facebook and LinkedIn



117,332 post impressions
591 new followers



580,079 reach
590,345 post impressions



972,397 post impressions
21,641 engagements



***SciDev.Net* story on contaminated breast milk in Ghana**

Shared with Pure Earth Ghana and researchers at the Ghana Atomic Energy Commission – leading to plans for interventions and a push for funding.



***SciDev.Net* story on irresponsible practices of e-waste companies in Latin America**

The article changed the perception of lawmakers, politicians, journalists and the public, particularly in Brazil, Chile and Peru about these dangers.



***SciDev.Net* story on India road safety model which ‘can save lives worldwide’**

The opinion piece tackled the initiatives led by SaveLife Foundation to reduce the number of road accidents happening along Mumbai-Pune Expressway. It was picked up by Innovation Advisor at the Prime Minister’s Office at the UAE.

Across CABI platforms



More engaging websites – UX improvements and new content



Improved email campaign processes, monitoring and data cleansing



Websites becoming more discoverable through SEO techniques



More focussed use of Pay per Click to drive traffic to key content



More and better performing news and blogs



More techniques to capture user data – despite data privacy laws – through better web sign-up forms

Awards 2024



Winner

Partnership Award 2024

Used examples from PlantwisePlus
work to meet the criteria



Silver Winner

Sustainability Award 2024

For Ukulima True campaign



Landscape Initiative



Phyllis Engefu Ombonyo





CABI Landscapes Initiative

Addressing Member Country concerns about impact of climate change, land degradation, and invasive species

Using an Integrated Landscape Management (ILM) approach, which refers to long-term collaboration among diverse stakeholders to foster natural resource resilience at the landscape level with the aim to provide sustainable livelihoods and improve ecosystem goods and services

One key element is the development of a Pooled Fund

Member Country Engagement in 2024



Kenya  **18-20 Jun**

Kenya 18-20 June

24 participants from
18 entities

8 landscapes identified,
4 prioritized

Workshop report shared

Engaging with existing
National ILM Platform
(KenLab)



Malawi  **28-30 Aug**

Malawi 28-30 August

21 participants from
20 entities

8 landscapes identified,
2 prioritized

Workshop report shared

Engage with existing National
Platform (FLR)



Tanzania  **8-10 Oct**

Tanzania 8-10 October

28 participants from
15 entities

6 landscapes identified,
3 prioritized

Workshop report about
to be shared

Advisory Group established
by participants



Ethiopia  **11-12 Nov**

Ethiopia 11-12 November

20 participants from
11 entities

7 landscapes identified

Workshop report in
preparation

Connected with entities
active in ILM space

Donor Engagement in 2024



Confirmed donors:



Concept Development Taskforce (virtual)  Jan-March

Leaders Roundtable (virtual)  11 July

Africa Food Systems Forum, Kigali, Rwanda  2-6 Sept

New York Climate Week  22-29 Sept

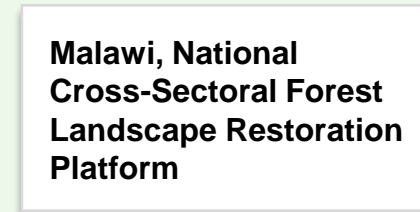


Partner Engagement

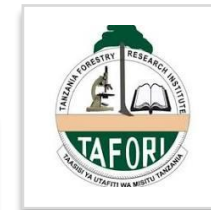
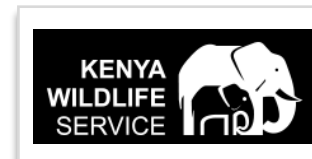
Global ILM Networks



National ILM Networks



Other International and National Partners



Plans for 2025

Finalize Programme Implementation Plan and use as basis for Pooled Fund proposals

Obtain first funding or at least funding commitment for the Pooled Fund

Conduct in-country workshops at sub-national/community level to co-develop concrete projects in areas identified in 2024

Establish internal governance structures; including the pooled fund governance.

Branding agreed upon and developed

The background of the slide features a series of corn cobs. The first three cobs on the left are brightly lit and show individual kernels in various colors including red, blue, yellow, and green. The remaining cobs on the right are progressively darker, fading into a dark grey background, which emphasizes the white text overlaid on them.

Global Burden of Crop Loss: Data and evidence for global food security



Cambria Finegold





Keeping pace with the growing demand for food, under increasing impacts from climate change, is one of the defining challenges of our time.

High levels of crop loss makes this even harder. Around **40%** of the world's crops are lost to pests alone.

But decision-makers lack the evidence they need to tackle the problem.



WHAT

Which crops
are being lost?



WHERE

Where are they
being lost?

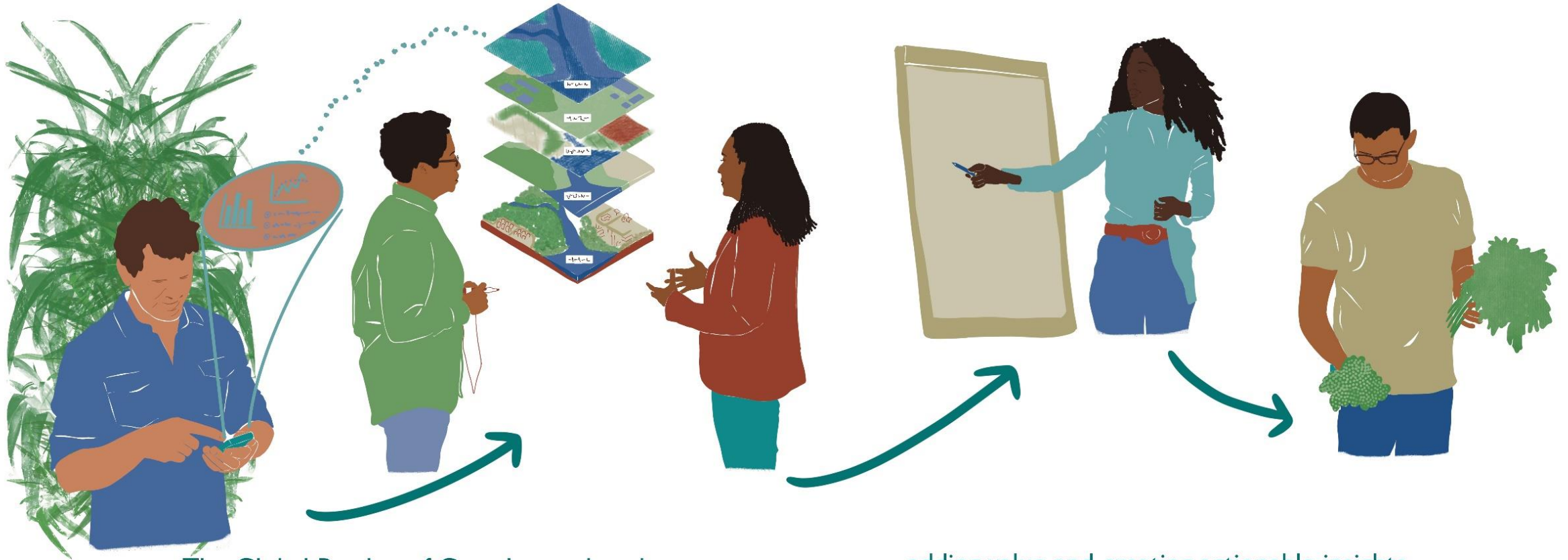


WHY

What is causing
the losses?



How it works...

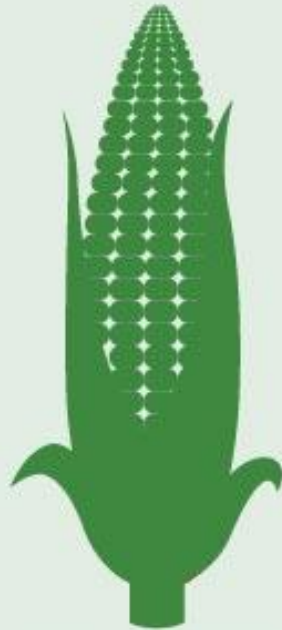


The Global Burden of Crop Loss takes data from around the world and transforms it...

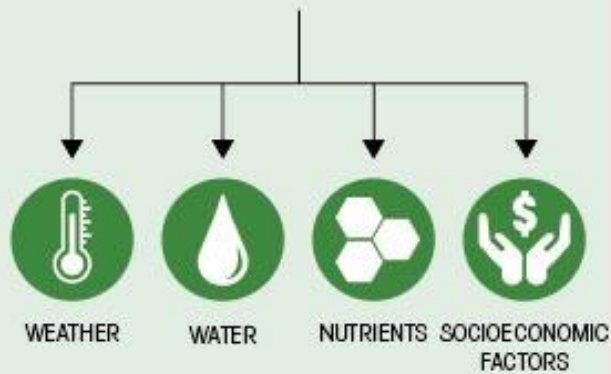
adding value and creating actionable insights for governments, funders and researchers.



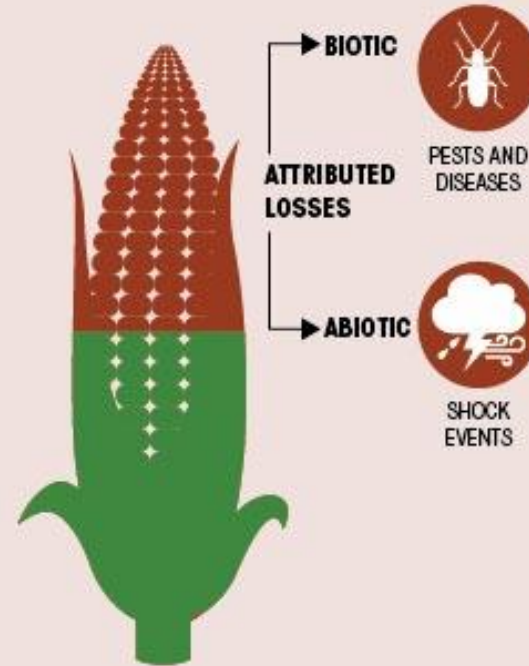
ATTAINABLE YIELD UNDER LOCAL CONDITIONS



TAKING INTO ACCOUNT



CROP LOSS



VALUE OF LOSSES

CONTROL MEASURES



COST OF CONTROL

BURDEN



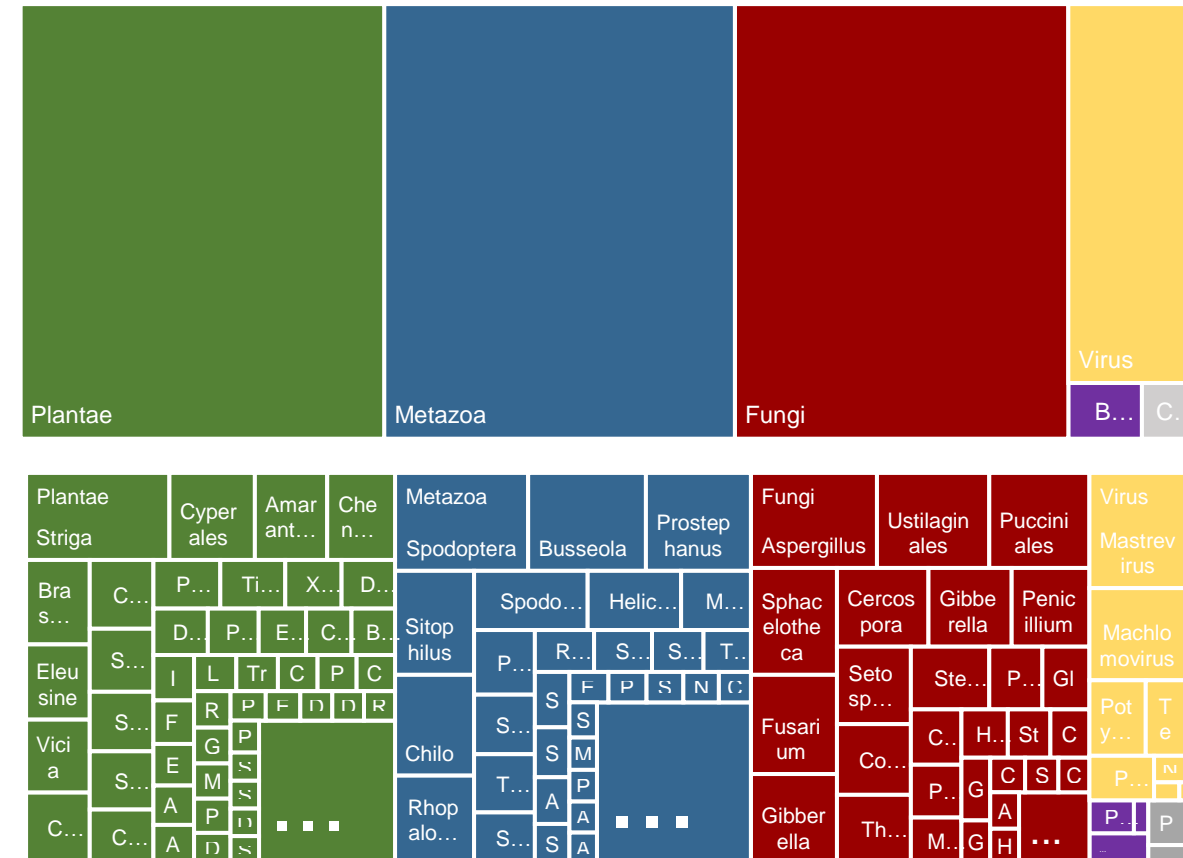
Estimates of maize yield losses in Kenya and key biotic constraints

Attainable yield and loss estimates

Attainable production 2010 2015	4,230,077 t 4,419,416 t
Actual production FAO 2010 2015	3,464,598 t 3,825,092 t
Total loss envelope 2010 2015	765,479 t 594,324 t



Key biotic factors – by group and genus





GBCL Plans 2025-2027

Global – country-level

Regional – tropical crops

Case study countries



Wheat



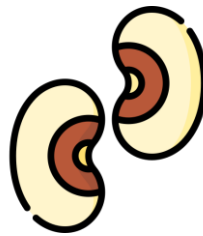
Maize



Rice



Cassava



Cowpea



Banana

Deliverables

- Attainable yield estimates (suite of statistical and mechanistic approaches)
- Crop loss envelope estimates
- High level attribution of crop loss to abiotic/biotic factors
- Economic burden estimates

Kenya
Ghana



Ethiopia



India



Pest Risk Information SErvice (PRISE)



Charlotte Day



PRISE 101: What it does

The Pest Risk Information Service (PRISE) is an **early-warning information system** that forecasts the **risk of crop pest outbreaks**, and provides farmers with alerts on the **best time to intervene**.



Developed in Kenya, Ghana, Zambia and Malawi, models are transferable to additional countries* and offer alerts on the maize-bean-tomato cropping system commonly found across Sub-Saharan Africa.



Combines earth observation derived weather data with pest models to **give optimum time to act (TTA)** alerts; providing decision support on 'when' taking action is most effective and efficient to the existing wealth of 'what' IPM interventions to take.



Pest models help to pinpoint ahead of time when pest presence is likely at the most appropriate lifestage and population density for taking intervention that achieves maximum control.

*with varying degrees of calibration required





THE PRISE SYSTEM

(LINE DIRECTION INDICATES FINAL MODEL FLOW)

3RD PARTY INFORMATION RESOURCES

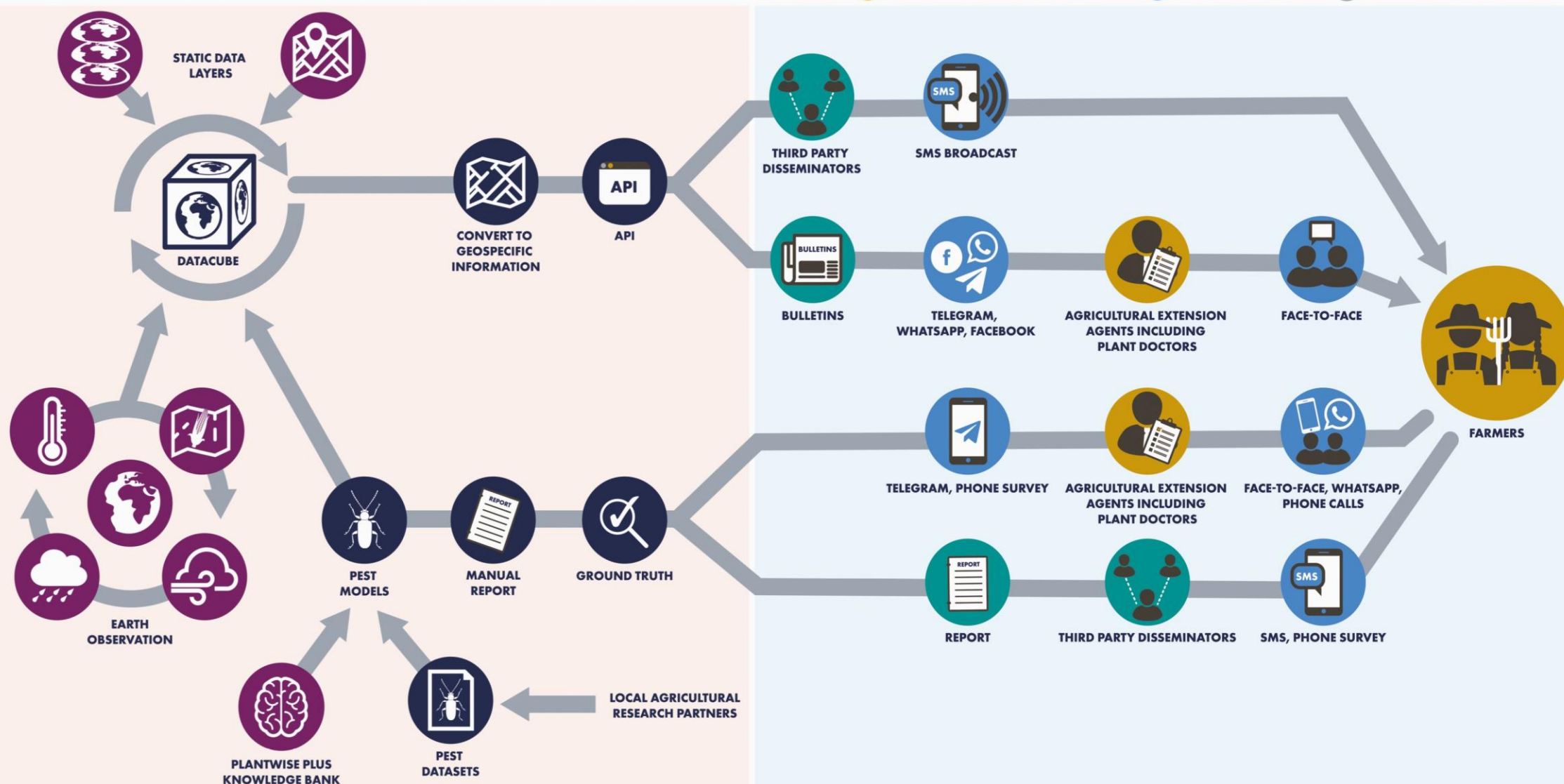
PRISE

OUTPUT FROM PRISE METHOD OF COMMUNICATION

USERS

METHOD OF REACH

REGULAR UPDATES



Dissemination

PRISE TTA alerts are incorporated into national agricultural extension services and third-party disseminators including SMS services and radio broadcasts

- KALRO in Kenya currently reaching ~1m farmers/month with PRISE TTA alerts via SMS

PRISE Bulletins are produced twice a month throughout a given cropping season in each country

- Bulletins are shared with Plant Doctors and other extension advisors as complementary advice

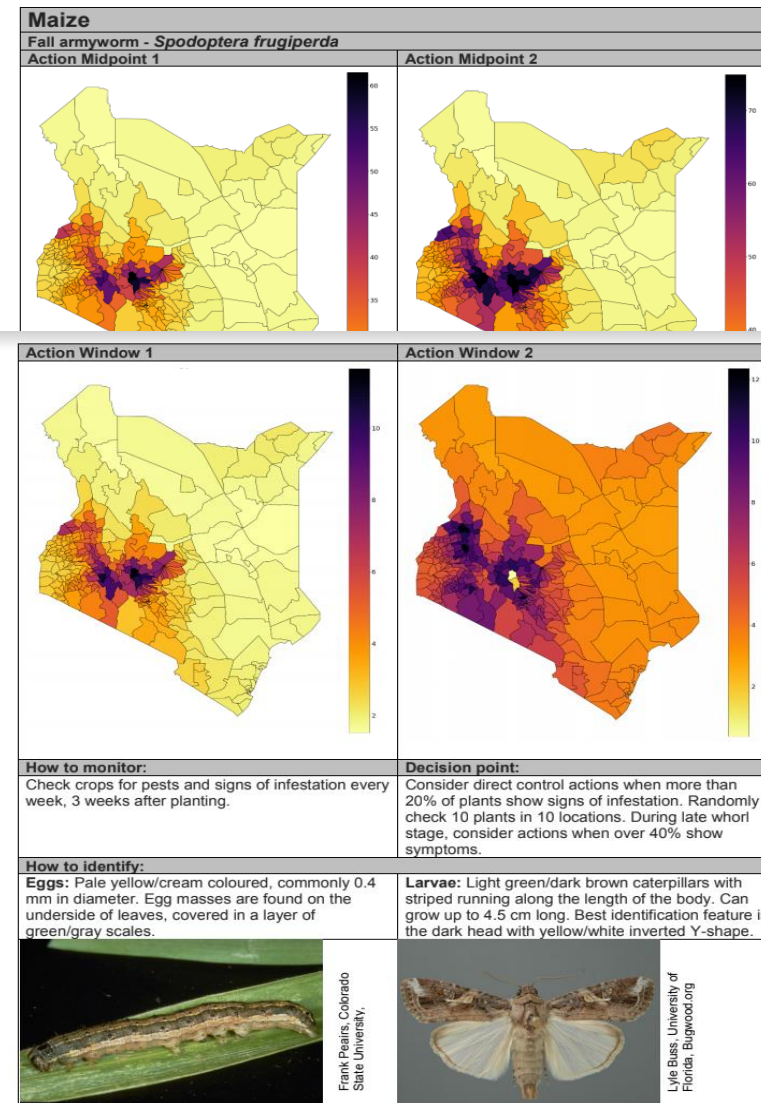
Bulletins contain PRISE TTA forecast in map format, Plantwise Pest Management Decision Guide (PMDG) recommendations and Met department rainfall forecast.

Kenya Update 13/05/21



The Pest Risk Information Service (PRISE) bulletin service provides pest information focusing on some of the most damaging pests of maize, tomato and bean crops.

The IPM advice contained in this document has been approved and validated by in-country experts. Always check for these pests in the field before alerting farmers.





Impact to Date



Over **2 million smallholder farmers** reached in Sub-Saharan Africa since 2017

TTA alerts increasingly embedded in government agricultural advisory services

Pilot phase endlines in 2022 show an average of **13% increase in yields** compared to control group farmers

One study on fall armyworm TTAs found that **59% of farmers** who received the service changed their practices

A 2024 study in Kenya on tomato production found that farmers experienced an **increase in tomato yields and farm income by 46% and 62% respectively compared to control farmers (16% and 11% compared to GAP only recipients)** after receiving tomato leafminer time to act alerts

Studies show the benefit of receiving information e.g. **increased Integrated Pest Management uptake, including reduced application of pesticides**



Scan for a published
PRISE paper

Benefits of PRISE



First of its kind – a digital service aimed at controlling plant pests and diseases. This unique offering complements existing advisory services and adds value to any portfolio of products.



Proven to enhance the bottom line – farmers are equipped to improve decision making, make efficient use of available control methods and boost incomes.



Enables a sustainable farming system – earlier and better interventions save farmers money as well as reduce reliance on harmful pest control methods.



Cost effective – PRISE is highly scalable, able to deliver data and advice from field-level to the national scale.



Flexible and adaptable – the PRISE platform and datasets can be repurposed and used for other applications such as climate risk analysis, crop mapping and modelling, early warning and other risk alerts such as flood and drought.

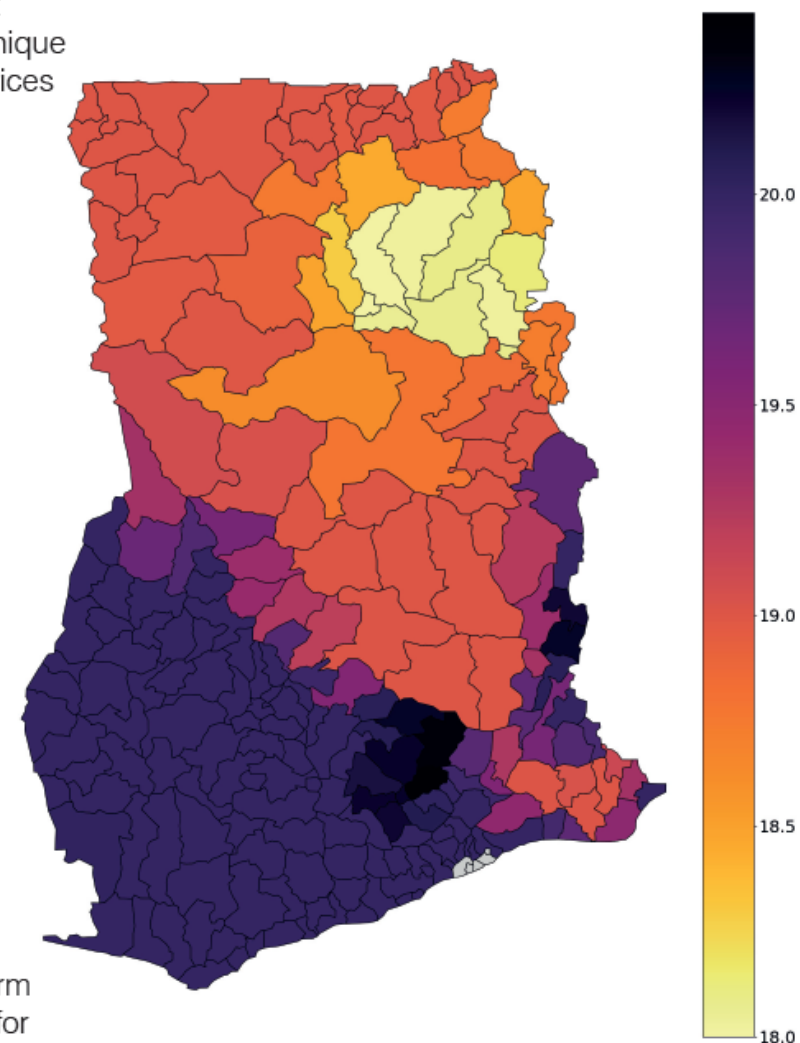


Figure 1: A map of Ghana demonstrating the time to action window (from the planting date) for Fall armyworm



PRISE 2025+

Kick off new project with USAID in Zambia:

- Embed PRISE TTA with Zambia digital advisory service (ZIAMIS)
- Create PRISE learning material for model creation
- Conduct randomized controlled trial (RCT) on maize/Fall Armyworm to understand PRISE impact at scale
- **Define a scaling approach to take PRISE to new countries within and outside of Africa**

Continue work on coffee berry borer models in Kenya and Colombia, including connecting TTA with timing of biopesticide application model

Develop a forecast-data driven pathology service to complete pest TTAs with pathogen 'high risk' alerts

Define a sustainable delivery model, including the development of commercial services for financial sustainability.

Finance update



Leonard Kimutai



Net Revenue 2024 – YTD Nov and Forecast

	YTD			Forecast		BUD	
£'000	Actual	Budget Var %	Growth vs 2023 %	Full Year	Growth vs 2023 %	Full Year	Forecast vs Budget
Knowledge Business	10,962	(7)%	6%	12,950	7%	13,234	(2)%
International Development	21,999	(10)%	(2)%	25,756	2%	28,478	(10)%
Corporate/Central costs	4,137	16%	11%	4,686	10%	4,188	12%
Total	37,098	(7)%	1%	43,392	4.5%	45,900	(5)%

- We forecast a 4-5% revenue growth over prior year. Below budget due to shortfalls and delays in some project revenues.

Operating Surplus – YTD Nov and Forecast

£'000	YTD			Full Year	
	Actual	Budget	2023	Forecast	Budget
Knowledge Business	3,606	3,955	3,777	4,482	4,612
International Development	(476)	37	695	50	520
Corporate	(4,429)	5,218	(4,315)	(4,510)	(5,068)
Total	(1,299)	(1,226)	157	21	64

- We forecast to deliver a modest surplus for the FY 2024 on the back of headwinds from inflation, revenue shortfalls.

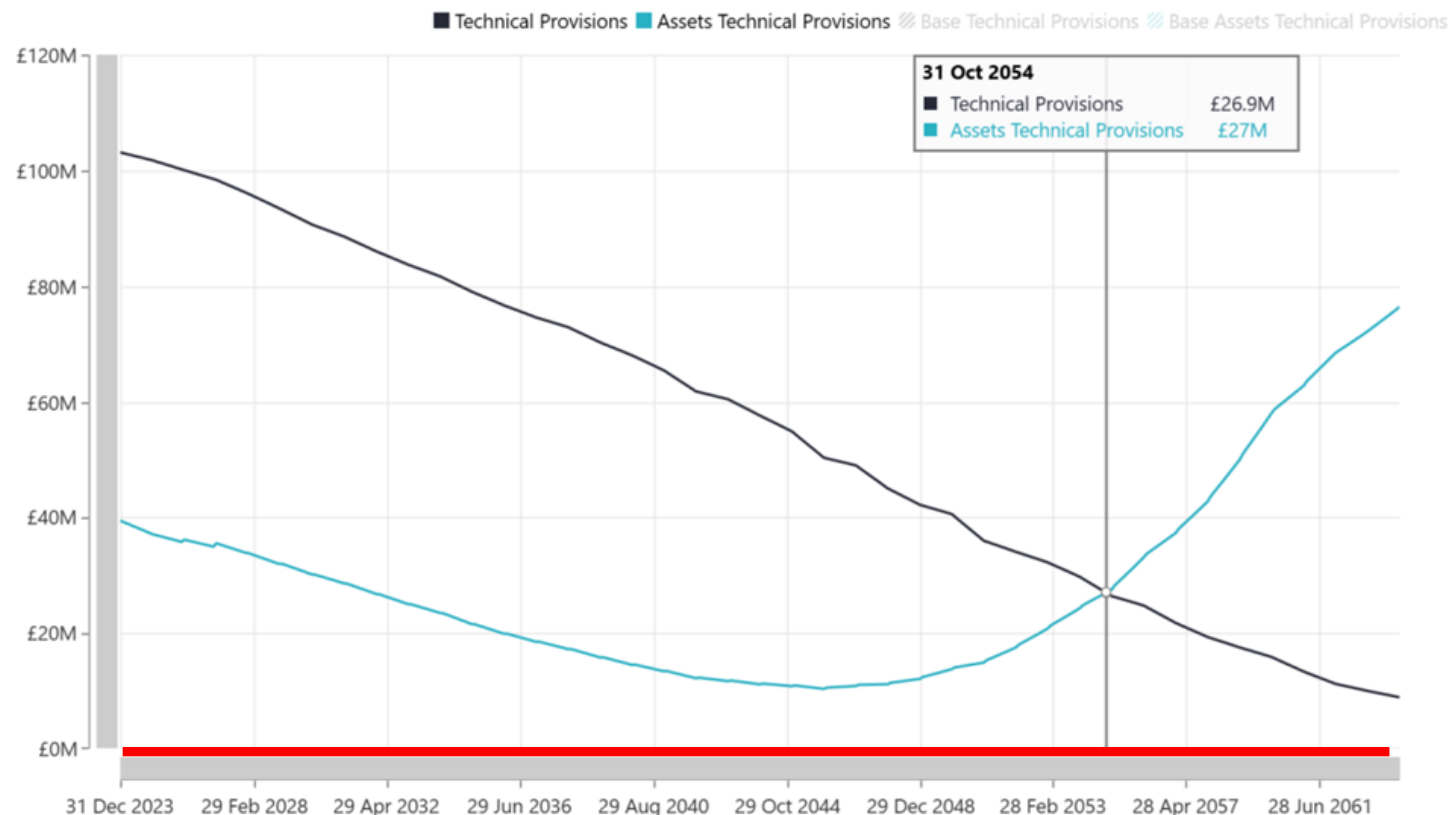
Update on the UK Defined Benefit Pension Scheme



Leonard Kimutai



Results of the New Recovery plan



Essence of the New Recovery Plan

- CABI will inject a **lumpsum of £1.205m** (£500k in 2025 and a further £705k in 2026). Supported by the Egham asset sale.
- Apply an increase of **5.2% annually** on (slightly enhanced) CABI monthly contributions from 2025 till 2028. Thereafter grow by Inflation.
- Manageable from CABI's resources

- The Scheme's projected minimum asset value improves to **~£10m** in 2045
- The contributions expected to **remove the deficit by 31 October 2054** (similar to the 2020 valuation)
- The plan was well received by the UK Pension Regulator
- The plan was discussed at the Exco Sub-committee on Finance & Risk held 29th November 2024 and approved at the CABI Board last Dec 2024

UK Pension Scheme update 2024

£m	31 Dec 2024
Assets	30.7
Liabilities	96.1
Deficit	(65.4)
Funding ratio	32%

The Year Ahead



Daniel Elger





Member Governance and Engagement 2025-26

Executive Council Meeting 2025

‘Action-focused’ regional meetings
and review conference

- Regional meetings in 2025
- Review conference in early 2026



Executive Council meeting

20 March (10.00-12.00 GMT)

Virtual via [Zoom](#) (Meeting ID: 927 5341 0121; Passcode: 407609)

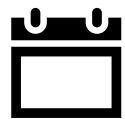
Executive Council members and Liaison Officers are invited

Agenda will include:

- Progress reports from the Board and CEO
- Updated impact metrics – year 2 of Medium-Term Strategy
- Approval of Budget 2025 and financial plan 2026-2027
- Election of Executive Council Chair and two Board Observers

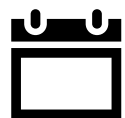
2.5 days
each

Regional Consultation Meetings



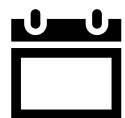
Asia-Pacific

Tuesday-Thursday, 18-20 February 2025
Kuala Lumpur, Malaysia



Africa

Wednesday-Friday, 11-13 June 2025
Nairobi, Kenya



Americas

Tuesday-Thursday, 16-18 September 2025
Port of Spain, Trinidad & Tobago



Regional Consultation Meetings

Action focus – pesticide risk reduction

- Participation supported by expert input
- How to advance at policy, regulatory and farm levels
- Country priorities for action
- Routes to mobilise resources for action

Work before, through and after meeting

Also:

- Working together
- Medium-Term Strategy (MTS) ‘refresh’
- Regional progress on MTS ‘23-25
- Major programme initiatives
- View from host country

2025 priorities



Deliver on third year Medium-Term Strategy targets



Agree Strategy refresh and new plans with Members



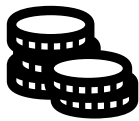
Deliver an expanded programme and project portfolio



Grow reach and sales of publishing products



Continue investment & reforms for Member-responsive growth



Meet Pension Scheme recovery plan obligations



Closing Comments & Discussion



Daniel Elger





CABI as an international intergovernmental not-for-profit organization, gratefully acknowledges the generous support received from our many donors, sponsors and partners. In particular we thank our Member Countries for their vital financial and strategic contributions.