

A photograph of a man, identified as H.E. Mr. Sani Redi, smiling while harvesting coffee cherries from a tree. He is wearing a dark hat, a patterned headband, and purple gloves. The background is filled with green leaves and coffee branches.

Working in partnership to address challenges in Ethiopia

H.E. Mr Sani Redi
State Minister for the Agriculture sector, Ministry of Agriculture, Ethiopia

Introductory Plenary Presentation



Working in Partnership to Combat Agri-Challenges in Ethiopia

Sani Redi

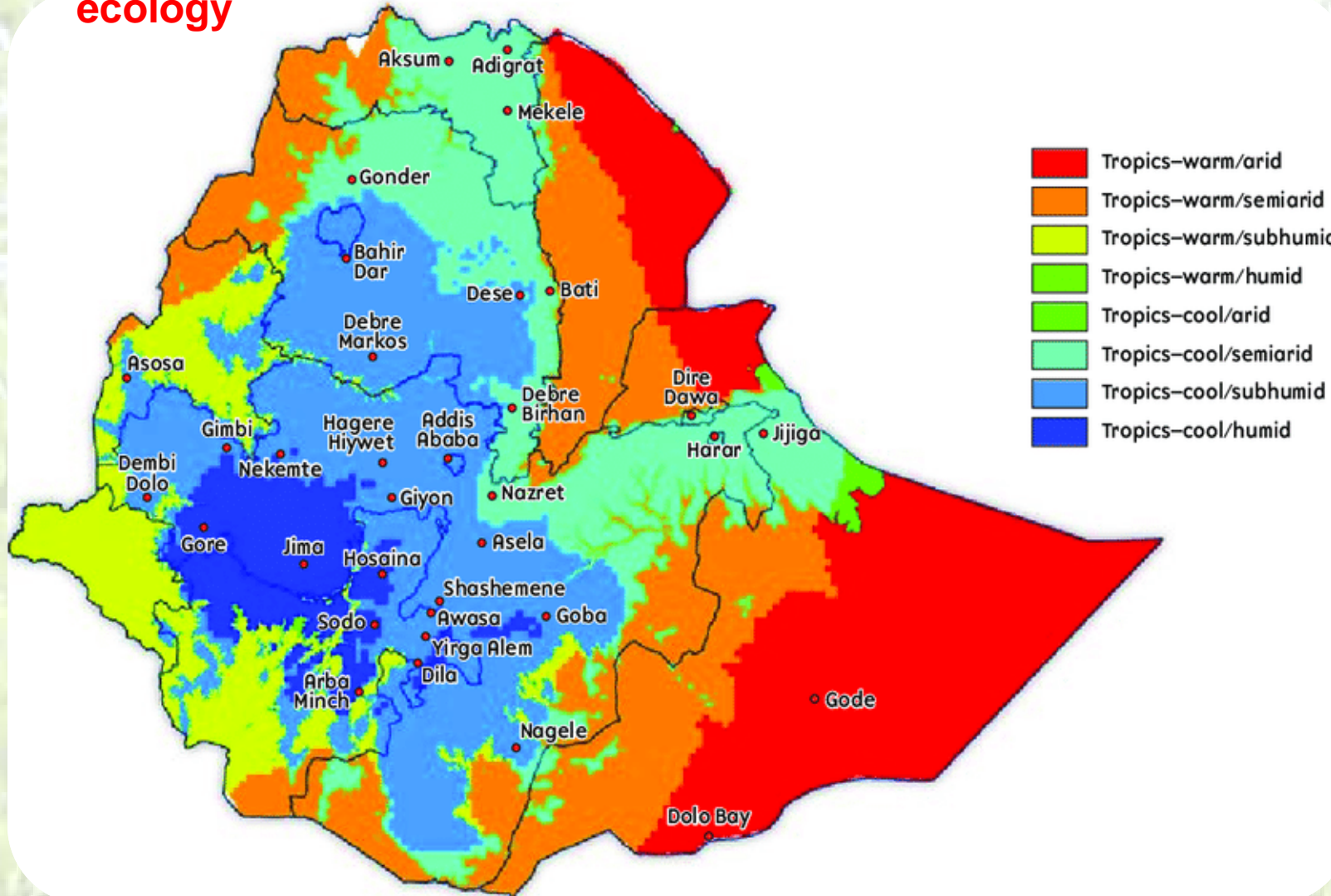
State Minister, Ministry of Agriculture
Federal Democratic Republic of Ethiopia

CABI 20th Review Conference
Egham, UK

12 - 13, September 2019

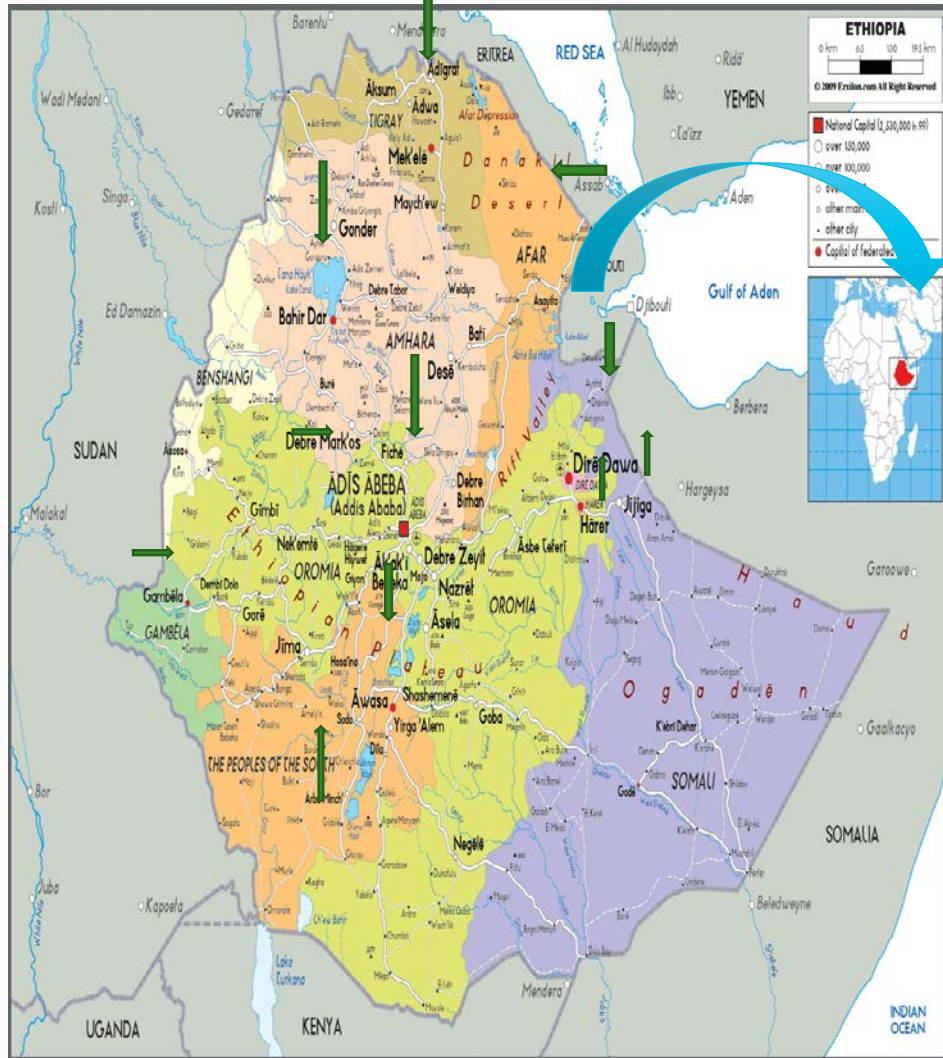
1. Background: Ethiopian is Origin to All

Conducive climatic conditions & diverse agro-ecology



- Ethiopia is the center of origin and diversity for many crop & LS
- Ideal agro climate:
 - Coffee & cotton
 - Oil & pulses
 - Herbs & horticulture
 - Floriculture & Spices
 - Cattle & Sheep
 - Goats & Aquaculture
 - Apiculture
 - Forestry, etc.

Agriculture is Beyond Production



Population >110 million (73% Ag)

Total area 1.14 mill sq km, 74.4 million ha (66%) arable, cultivated land 15 million ha

GDP growth last 12 yrs Av. 10.9 (Agi 8.%)

Agriculture Account for 35.5% of the GDP

Agriculture earn 80% of FX

Per capital income USD 883

2. Key challenges facing Ethiopian Agriculture



ጥበቃና ምርት
MINISTRY OF AGRICULTURE



Basic Question: Food & nutrition security, FX, job creation and substantially improving rural livelihoods... Beyond Production

Main reasons

- ***Low agriculture production & productivity, low quality***

Contributing factors

- Impacts of the Climate change
- Increasing pest and disease problems (including invasive)
- Shortage of improved technologies/inputs
- Dependence on rain-fed agriculture
- Subsistence-oriented production and lack of market-orientation
- Degradation of natural resources (including soil fertility)

Among Key Challenges:

Increasing pest and disease is the uppermost



ጥበቅና ሚኒስቴር
MINISTRY OF AGRICULTURE



Major contributing factors: including Invasive

- Climate change.....
- Geographic location (Tropic, Rift valley & 6 Countries)
- Diversity of agro-ecology
- Expansion in irrigation activities and farm intensification
- Increasing trade: increase humans, goods and service movement
- Less level of awareness, integration and coordination to combat)

3. Ethiopia is Working in Partnerships: CABI



ግብርና ሚኒስቴር
MINISTRY OF AGRICULTURE



CABI and Ethiopia have longstanding relationships through:

- Implementation of a number of joint development and research projects
- Capacity building activities
- Use of CABI diagnostic services
- Use of CABI information resources

- Ethiopia has decided to become a member of CABI
- CABI and member country executive council gave us positive response
- We would like to thank for the quick and positive response
- We are currently pursuing some national legal procedures
- Hoping to become a full member of CABI soon

Ethiopia is Working in Partnership . . .

Different actors, but complementary roles

Government

Provides support – enabling policy and institutional environments

Global and regional Organizations

- CABI, FAO, AU, CYMMIT
- DLCO-EA, AGRA,
- GIZ, JICA, IFAD, etc

Support in designing projects, capacity building, raising resources, up/out scaling, etc

Private sector

Foster active participation of the private sector, how?

To achieve shared goals

We have recorded significant success through our partnerships **with CABI** and other development partners, e.g.

- Successful experiences/lessons from **CABI – coffee projects** have been integrated into our regular extension system
- Our ministry & other partners are currently investing in and scaling up/out **CABI's Plantwise initiative**

4. The Need for Global Partnership is to Combat Global Development Challenges



ግብርና ሚኒስቴር
MINISTRY OF AGRICULTURE



- **Global solutions are needed for Global Development Challenges**
- **Partnership has transformative power and that helps to:**
 - mobilize and apply resources (including expertise, finance, information, technology/innovations) to achieve development impacts
 - advance national development agenda and global development goals
 - SDGs can only be realized with a strong **global partnership**
- To be successful, **Partnership** has to be genuine commitment, collaborative and mutual relationship, and aim to attain shared goals
- **The Impacts are that all we share will be:**
 - Improving production and productivity, quality
 - Improving Livelihood to millions of poor rural and urban communities
 - Improving communication and collaboration to common interest

4. Potential Priority Area to Partnership



ግብርና ሚኒስቴር
MINISTRY OF AGRICULTURE



- **Initiatives to combat the impacts of climate change:**
 - Climate smart interventions – technologies and practices
 - strengthen adaptive capacity and resilience to climate change
- **Support on pests and disease management**
 - ICT supported pest surveillance, monitoring, early warning and management system
 - Strengthening diagnostic and SPS/PRA capacities
 - Invasive species management
- **Increasing production of market-oriented agriculture, including**
 - Development and use of market-oriented agri technologies
 - Irrigated agriculture system
 - Commercialization through land consolidation and clustering approach
- **Initiatives that facilitate market access and integration**
 - Value addition, value chain development, market linkage
 - Support on meeting international standards for quality and food safety
 - Integrated Agro Industrial Parks



ግብርና ሚኒስቴር
MINISTRY OF AGRICULTURE



Thank You
All