



Welcome to CABI and welcome to Egham

Welcome slides for RC20

Egham Team Leaders

Presented by Dr Dick Shaw – CABI Country Director UK

KNOWLEDGE FOR LIFE





what is CABI?

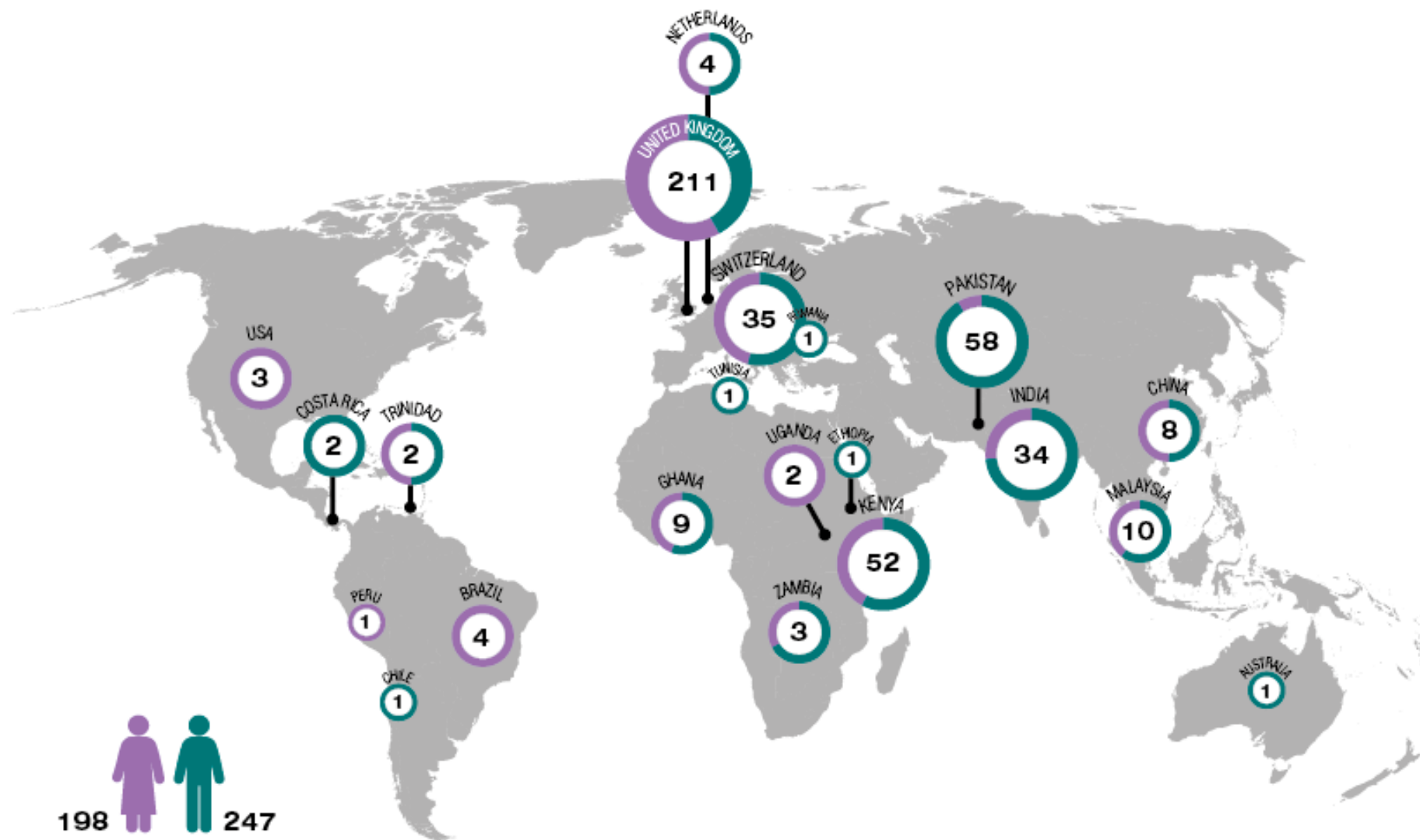
CABI is a not-for-profit science-based development and information organization



Improving lives worldwide

CABI creates and applies knowledge that addresses challenges faced by people around the world

Global reach We have 480+ staff across 21 locations worldwide





Complement of Staff at Egham

Unit	Bioscience	Corporate	Int Dev	Totals
Head count	22	8	31	61
FTE equivalent	17.8	7.3	23.6	48.7

Delivering more than 100 “projects” each year



Teams in Egham

International Development (ID)

- Invasives
- Biopesticides
- Trade and Commodities
- Plantwise

Microbial and Molecular Services (MMS)

- Identification Service
- Genetic Resource Collection
- Molecular services
- Environmental and Industrial Biology




Value chains and trade



Invasive species

Invasives won gold at RHS Chelsea Flower Show



A photograph of a group of people, primarily of African descent, looking towards the left side of the frame. In the foreground, an elderly woman with a green headwrap and a dark patterned shirt is looking intently, with her hand near her face. To her left, another woman in a dark headwrap with colorful trim is also looking in the same direction. In the background, several other individuals, including a young boy in an orange shirt, are visible, all appearing to be part of a community gathering or event. The lighting is somewhat dim, suggesting an indoor or evening setting.

Development, communication & extension



Crop health



Digital development



Publishing

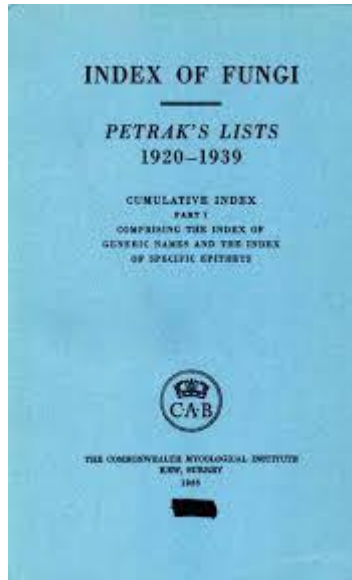
A microscopic view of plant cells, likely from a leaf, showing various structures such as chloroplasts and cell walls. The image is overlaid with a semi-transparent red filter. The text "CABI science" is centered in white.

CABI science

Library with 2,200m of material and a mycological reprint collection of >150,000 papers



Other information products



- Bibliography of Systematic Mycology (1500 items/yr, biannual, April and October, print-only)
- Index of Fungi (2000 items/yr, biannual, January and July, print-only)
- Descriptions of Fungi and Bacteria (4 issues/yr, 10 sheets/issue, print and online)

Legacy content

- Fungal identification from IMI and correspondence
- Entomological identifications from IIE and correspondence
- IIBC archives
- IIP archives

CABI Bioscience

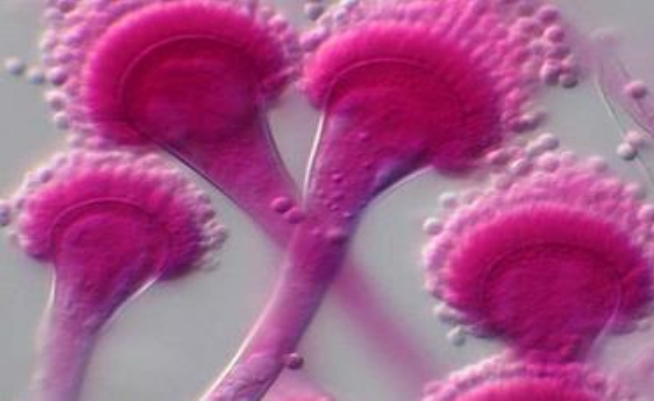
Providing microbial and molecular services to partners



Background

A team of 19 in **CABI Bioscience** provides a wide variety of services and biological resources to commercial customers, CABI Projects, and Member Country organisations

- Microbial Identification Service
- Molecular services
- Environmental and Industrial Biology
- Genetic Resource Collection
- Diagnostic and Advisory Service



Background

A team of 19 in **CABI Bioscience** provides a wide variety of services and biological resources to commercial customers, CABI Projects, and Member Country organisations



- Environmental and Industrial Biology



Environmental and Industrial service



- Work with industrial customers
- Investigate microbial contamination issues with products and production processes
- Identify moulding issues in buildings and construction. Undertake environmental and air sampling on site
- Mould growth testing of manufactured products (UKAS)
- Industrial testing & consultancy (UKAS)

Conidia Bioscience

[HOME](#)[ABOUT](#)[INDUSTRY](#)[HOW TO BUY](#)[TESTING KITS](#)[NEWS](#)[RESOURCES](#)[CONTACT](#)The FUELSTAT logo is displayed in white, bold, sans-serif capital letters on a dark blue rectangular background. A registered trademark symbol (®) is located at the top right of the text.**FUELSTAT®**

The 10 minute on site test
for microbial contamination in fuel
Now with **NEW** FUELSTAT® Result.

From Fuel Sample to Validated
Test Report in Minutes.

The background image shows a large commercial aircraft on a tarmac under a blue sky with scattered clouds. A white fuel tanker truck is positioned to the left of the aircraft, with a fuel hose connected to its wing. Several ground crew members in high-visibility vests are visible near the truck and the aircraft. A small white utility vehicle is parked in front of the aircraft's nose. A yellow button with the text 'Click to find out more >>' is overlaid on the right side of the image.[Click to find out more >>](#)

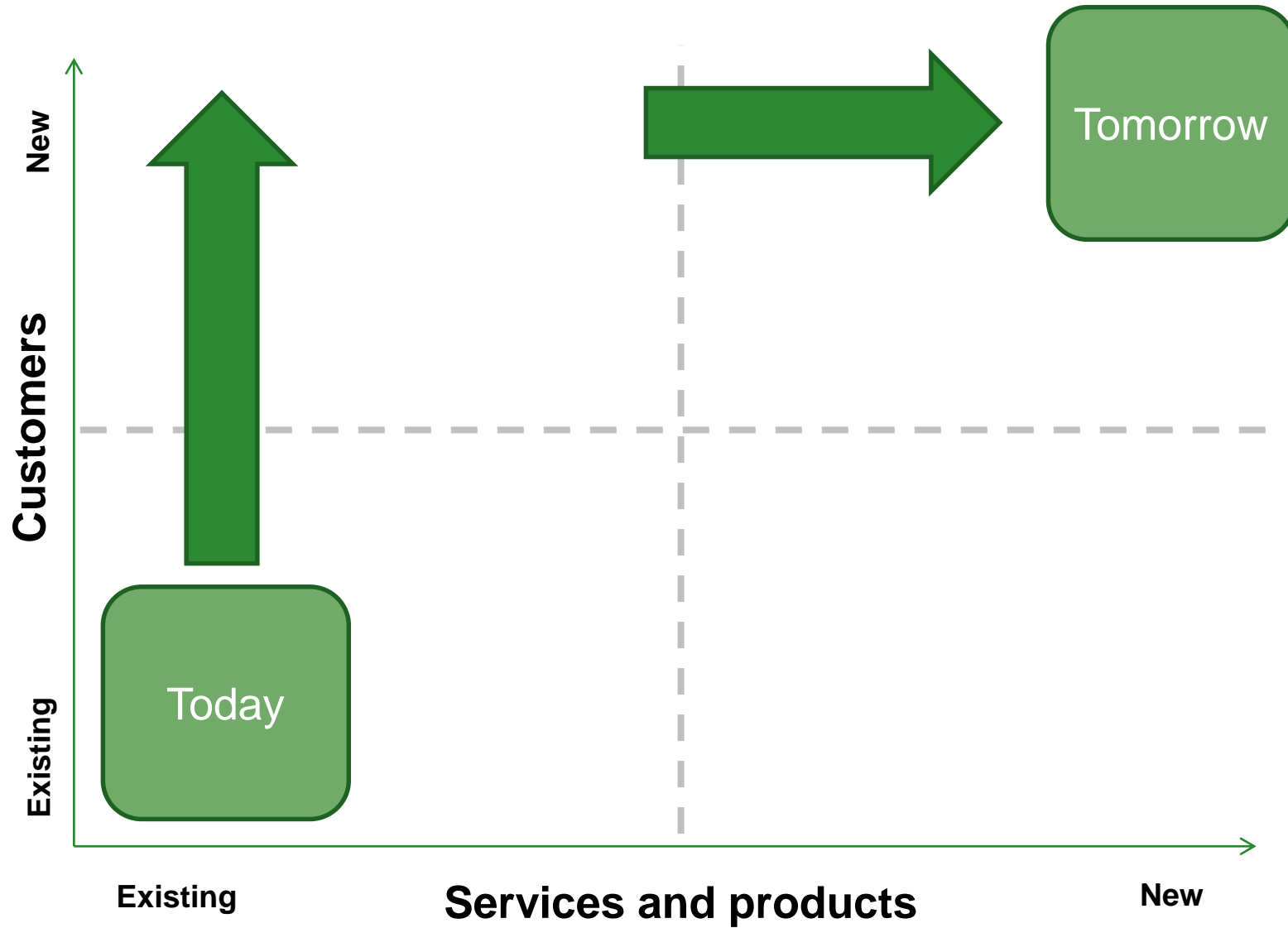
FUELSTAT has launched the fastest, most reliable test ever seen in the market!

Strategy to build the business

Our **key areas of focus** are:

- Understand **Customers** and their **Needs**
- Improve customer experience
- Improve operational efficiency
- Branding
- Data-driven **marketing**
- Optimised **sales channels and pipelines**
- R&D and innovation
- Customer-needs-driven new products and services

Strategy to address the issues





Fleming's *Penicillium* strain goes on world tour!

As part of a 'Superbugs' exhibition in conjunction with the **Science Museum** in London we are reaching out to general public and the real movers and shakers to raise awareness and to make a difference in the fight against AMR (anti-microbial resistance)



China:

- | | |
|--|-------------|
| ● Guangdong Science Centre, Guangzhou | 04 Jul 2019 |
| ● Chongqing Science Technology Museum | 01 Dec 2019 |
| ● Wuhan Science and Technology Museum | 20 Mar 2020 |
| ● Zhejiang Science and Technology Museum | 01 Aug 2020 |

India:

- | | |
|---|-------------|
| ● National Science Centre, Delhi | 06 Sep 2019 |
| ● Nehru Science Centre, Mumbai | 09 Dec 2019 |
| ● Vishvesvraya Industrial and Technological Museum, Bangalore | 13 Mar 2020 |
| ● Science City, Kolkata | 12 Jun 2020 |

USA

- | | |
|---|-------------|
| ● AMR summit at the UN General Assembly in New York | 23 Sep 2019 |
|---|-------------|





CABI is an international intergovernmental organisation, and we gratefully acknowledge the core financial support from our member countries (and lead agencies) including:



Ministry of Agriculture and
Rural Affairs,
People's Republic of China



Agriculture and
Agri-Food Canada



Ministry of Foreign Affairs of the
Netherlands



Schweizerische Eidgenossenschaft
Confédération suisse
Confederazione Svizzera
Confederaziun svizra

Swiss Agency for Development
and Cooperation SDC



SCIENCE IN ACTION
Pre-Review Conference Tour of CABI Science Site (Egham) for
CABI Member Country Representatives
Wednesday, 11th September 2019

Programme

Address: CABI E-UK, Bakeham Lane, Egham, Surrey, TW20 9TY

Time	Event	Contact / Location
1200	<ul style="list-style-type: none">Departure from the Runnymede-On-Thames Hotel and Spa (Windsor Road, Egham TW20 0AG) to CABI E-UK by pre-arranged minibus	To be accompanied by Dr Qiaoqiao Zhang, Director, Memberships
1230-1315	Arrival, welcome, introduction & lunch (Blue room)	
	<ul style="list-style-type: none">Welcome remarks, and brief overview on CABI, CABI's International Development, and CABI Europe – UKBrief discussions	Dr Dick Shaw, Country Director, E-UK Dr Qiaoqiao Zhang
1315-1350	CABI in Action: Knowledge and Data - products, projects and services ALL PARTICIPANTS (Blue Room)	
	<ul style="list-style-type: none">Knowledge Management and Digital Development (overview, new products, projects and future plans)Application of earth observation data to combat pests and diseases in China and Colombia	Mrs Mary O'Connor, Head of Product Development, Knowledge Business Dr Belinda Luke, Team Leader, Biopesticides
1400-1510	Participants to be divided into 2 groups for 'show and tell' – please rotate after 35 minutes	
1400-1510 35 minutes each stream	STONE LOUNGE	
	Invasive Species Management	Invasive Species Team
	Action on Invasives	Julien Lamontagne-Godwin, Programme Manager
	Biopesticides Green Muscle	Dr Steve Edgington, Insect Pathologist
	Sample Processing Management	Esther Madden, Customer Liaison Coordinator
	Knowledge for Development	Dr Rob Reeder, Team Leader
	Value Chains & Trade (projects and capacity building activities)	Dr Jayne Crozier, Team Leader

1510-1630	Participants to be divided into three groups for Laboratory Tours					
	GROUP ONE: FALL ARMY WORM Host: Dick Shaw		GROUP TWO: TUTA ABSOLUTA Host: Louise Wall		GROUP THREE: PANAMA WILT TR4 Host: Sarah Thomas	
1515-1535	DAS LABORATORY		MOLECULAR LAB (1 st floor)		GENETIC RESOURCE COLLECTION	
	Diagnostic Advisory Service (DAS)	Thelma Caine, Team Leader	Molecular Services	Dr Giovanni Cafa	GRC (CABI's living collection of microbes)	Dr Matthew Ryan, Curator
	Screening Laboratory	Dr Mike Reeve, Innovation IP				
	GROUP ONE: FALL ARMY WORM Host: Dick Shaw		GROUP TWO: TUTA ABSOLUTA Host: Louise Wall		GROUP THREE: PANAMA WILT TR4 Host: Sarah Thomas	
1540-1600	GENETIC RESOURCE COLLECTION		DAS LABORATORY		MOLECULAR LAB (1 ST FLOOR)	
	GRC (CABI's living collection of microbes)	Dr Matthew Ryan, Curator	Diagnostic Advisory Service (DAS)	Thelma Caine, Team Leader	Molecular Services	Dr Giovanni Cafa
			Screening Laboratory	Dr Mike Reeve, Innovation IP		
	GROUP ONE: FALL ARMY WORM Host: Dick Shaw		GROUP TWO: TUTA ABSOLUTA Host: Louise Wall		GROUP THREE: PANAMA WILT TR4 Host: Sarah Thomas	
1605-1625	MOLECULAR LAB (1 st floor)		GENETIC RESOURCE COLLECTION		DAS LABORATORY	
	Molecular Services	Dr Giovanni Cafa	GRC (CABI's living collection of microbes)	Dr Matthew Ryan, Curator	Diagnostic Advisory Service (DAS)	Thelma Caine, Team Leader
					Screening Laboratory	Dr Mike Reeve, Innovation IP
1630-1700	Group photo, round up and farewell (Blue Room)					
	<ul style="list-style-type: none"> Questions/Answers Wrap-up discussions 				Dick Shaw, Qiaoqiao Zhang	

What happens next.....

- Departing the Blue Room you will be split into two groups for our 'show and tell'
- Group one start in the Panelled room and group two start in the Stone lounge
- Please switch upon hearing tannoy which will sound every 35 minutes
- You will then need to refer to the sticky dot on your badge for the lab tours which will be either **GREEN, BLUE OR YELLOW**
- Your group hosts will be:
- Dick Shaw for **Green group – FALL ARMY WORM**
- Louise Wall for **Yellow group – TUTA ABSOLUTA**
- Sarah Thomas for **Blue group – PANAMA WILT TR4**