

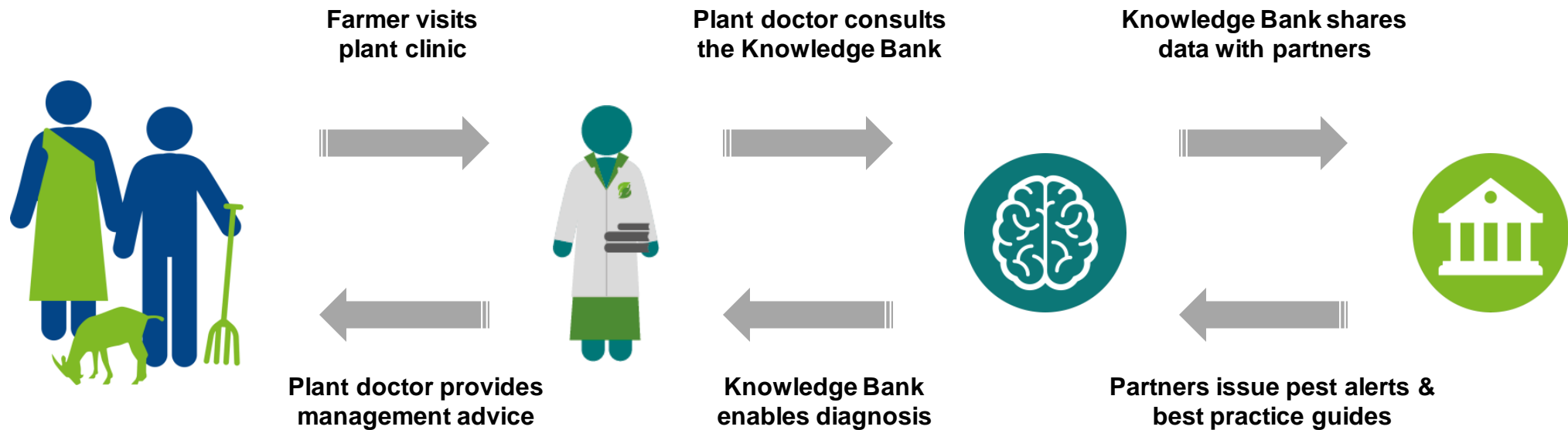
A photograph of a person, likely a woman, smiling while harvesting coffee cherries from a tree. She is wearing a wide-brimmed hat and purple gloves. The background is filled with green leaves and clusters of red coffee cherries. The text 'Plantwise Today and Tomorrow' is overlaid in white.

Plantwise Today and Tomorrow

Dr Washington Otieno, Plantwise programme executive

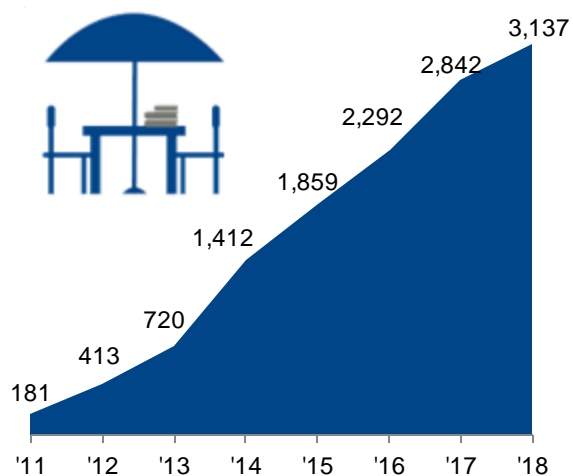
The Plantwise programme

- **Replicates** the human health clinic concept
- **Provides** diagnosis and recommendations on any problem and any crop
- **Staffed with plant doctors** from government departments, NGOs, private sector, etc.
- **Gives snapshot of problems** on farmers' fields

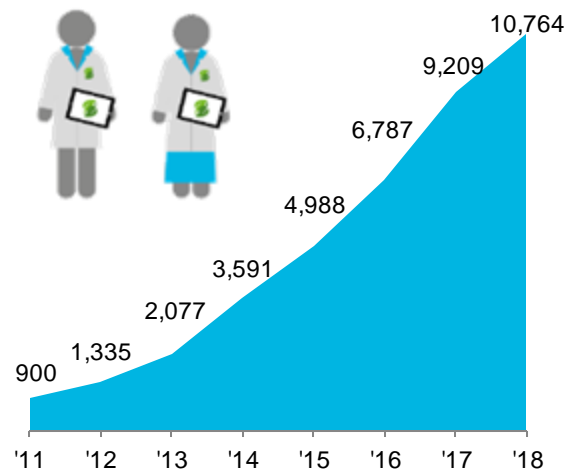


Delivering at scale

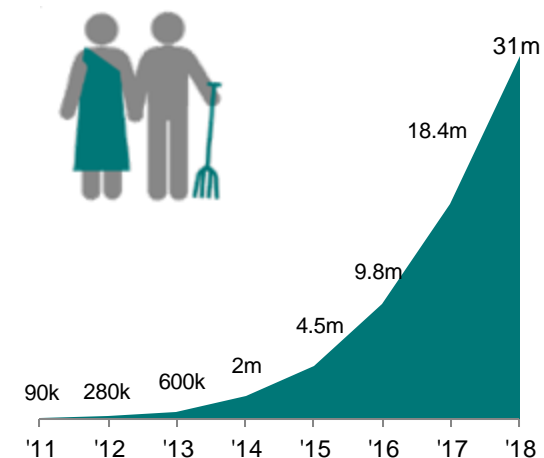
3,100 plant clinics established



10,700 plant doctors trained



31 million farmers reached





Progress to date

Plantwise is now recognised for:

- **Building smallholders' resilience** to emerging plant health threats through dynamic stakeholder engagements and partnerships
- **Providing a data-driven response network** that connects farmers with support services and enables early detection and on-farm management of problems
- **Offering individualised service to farmers** who seek advice and **responding to widespread problems** through extension campaigns that reach many farmers with actionable information
- **Enhancing confidence of farmers in advisory service providers** through innovations, digital tools and ICT-based networks of peers

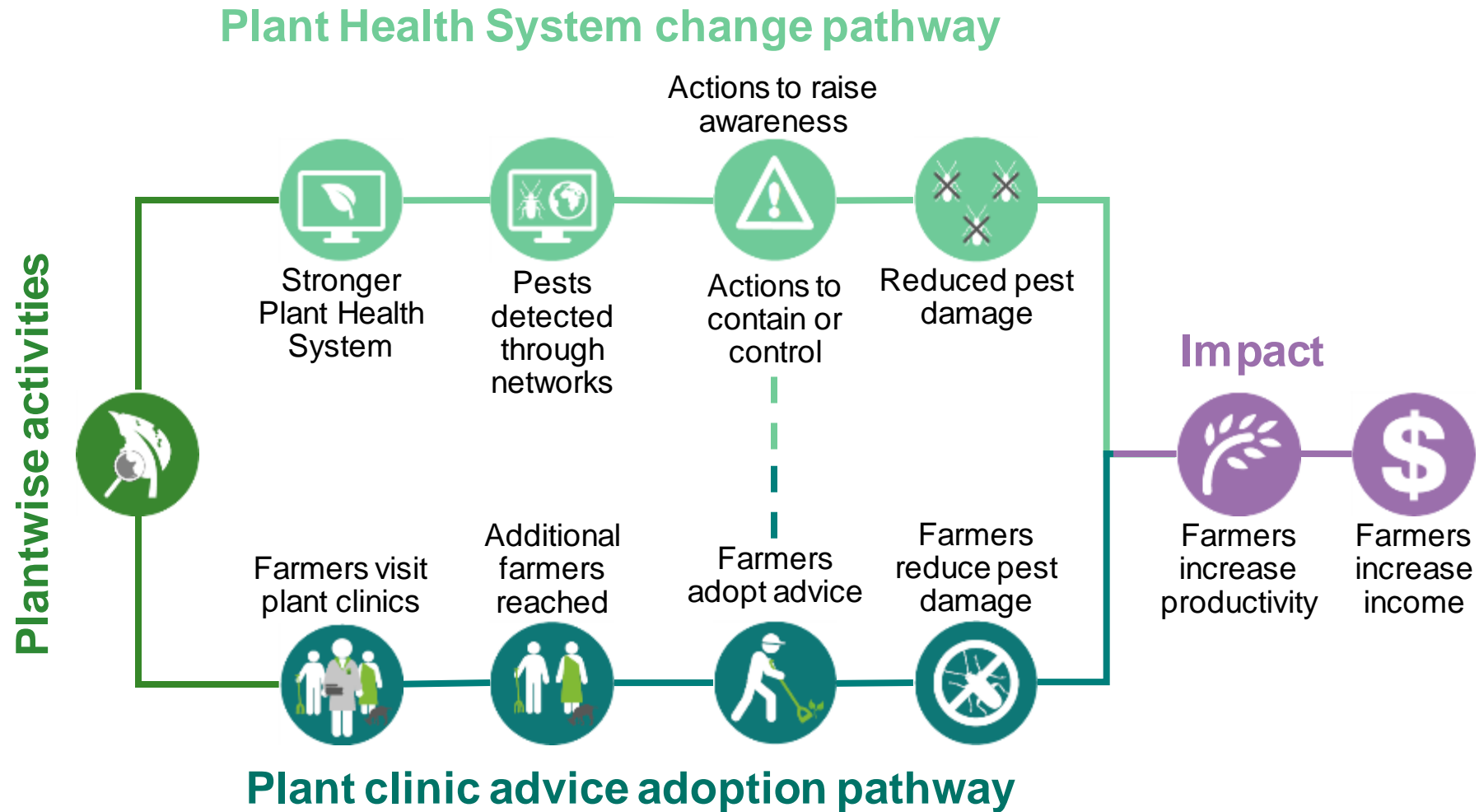


Progress to date

Plantwise is now recognised for:

- **Scalability and replicability**, building on knowledge and experience while promoting inclusivity and equity to benefit farmers
- **Flexible to country contexts**, mainstreaming operations into institutional mandates for agricultural advisory and plant protection services
- **Plantwise knowledge bank and plant clinic data** distinguish it from other extension approaches, and form key support tools for rapidly evolving needs
- **Putting research into use**, translating scientific knowledge into actionable best practice, delivered through simple, practical methods that are accessible at community level

Impact pathways





Lessons learned

- Plantwise helps **smallholder farmers produce and earn more** through integrated pest management practices
- Plantwise **gives value for money** with a demonstrated benefit cost ratio of 3:1 and internal rate of return on investment of 54%
- Plantwise interventions have the potential to reduce **the likelihood of a household falling below the poverty line**
- **Women were responsible for 32% of queries at plant clinics;** this is increasing in some countries
- **ICT innovations bring efficiency** in plant health management with potential for broader application



Continuing challenges

- Plant clinics contribute to pest detection and monitoring, but there is an **urgent need to strengthen the capacity of national systems to prioritise pest threats and respond rapidly** through agreed national pest management plans under a coordinated framework
- Although Plantwise has enabled plant doctors to reach larger numbers of smallholders with better advice, **it has not increased the number of personnel who are serving farmers**
- There are still many other **public and private sector advisory services**, in particular agro-input dealers, that **lack the capacity to provide sound diagnosis and crop management advice**



Continuing challenges

- While reliance on highly toxic pesticides is declining, data shows that **some advice to farmers still contains high-risk practices** that should be avoided for safer food in a healthier environment
- **Awareness of pesticide risk is low among smallholder farmers, advisory service providers and consumers**, which contributes to dangerous pesticide residue levels on food, particularly in local markets where monitoring is not enforced
- **Availability, accessibility and affordability are factors that limit uptake of low-risk plant protection products**; there are opportunities to overcome these constraints in partnership with regulators, manufacturers and community-based groups



CABI's new global programme

- Building on the approach of CABI's successful **Plantwise** programme and experience gained through the **Action on Invasives** programme, we will go further by increasing focus on:
 - Specific value chains in a changing climate
 - Digital development
 - Employment creation for women and youth
 - Private sector engagement



The goal

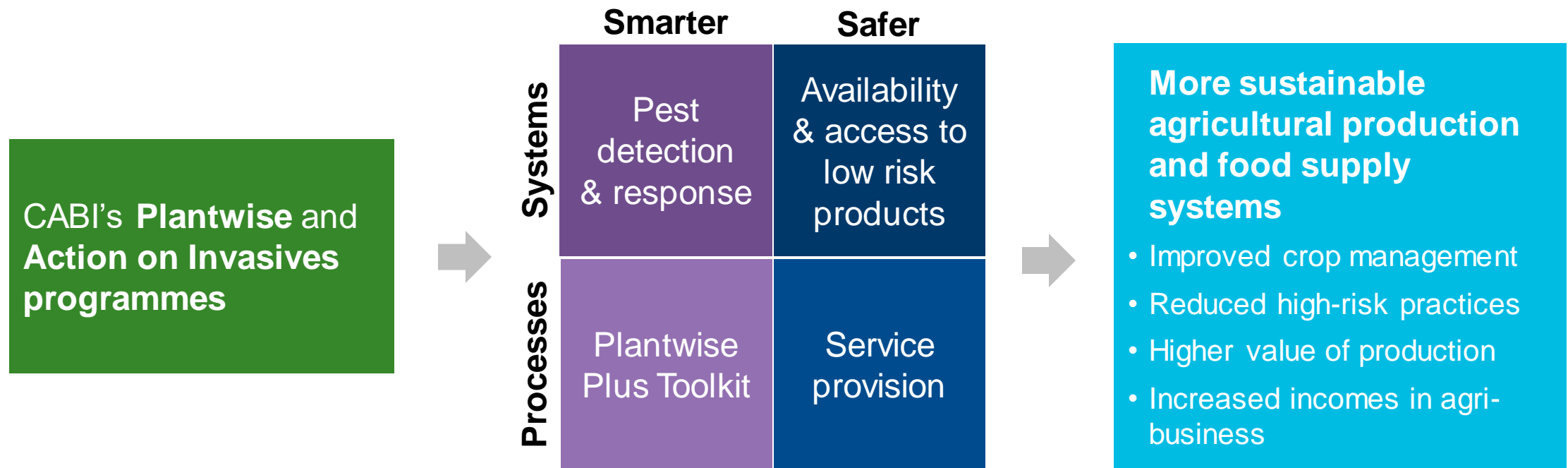
Smarter, safer and more sustainable agricultural production and food supply systems



Specific objectives

- Targeted and cost-effective **national pest prioritisation**, monitoring and management systems (using new technologies and processes)
- Knowledgeable and professional agricultural service providers promoting uptake of **safer and sustainable agricultural practices**
- Enhanced availability, accessibility and affordability of **low risk plant protection products**
- Increased demand and supply of **safer farm produce** in target crop value chains

Processes and systems





The difference we will make

- **Reduction of hunger** through prevention of crop losses by surveillance and response systems
- **Increased productivity and resilience** of smallholder farming communities
- **Increased supply of safe food** through reduction in use of high-risk practices
- **Increased agri-business** related employment opportunities, especially for women and youth





Going forward

- The **full CABI-led programme** is foreseen to run for 10 years (2020-2030), which will require an estimated support of €100 million to reach up to **20 countries**
- The proposed **multi-donor-funded global programme** will commence with a 3-year proof-of-concept phase during which interventions will be tested in 6-7 countries
- Delivery through **existing and new partnerships** with relevant stakeholders will ensure success of the new global programme



Open access knowledge tools

- Through Plantwise and Action on Invasives, we have developed **digital technology and data-driven tools** to help fight agricultural and environmental pests
- These include:
 - **The Plantwise Knowledge Bank**
 - **Invasive Species Compendium**
 - **Horizon Scanning Tool**
- In addition, the Crop Protection Compendium and Pest Risk Analysis tool are **freely available to 92 low-income countries**



CABI is an international intergovernmental organisation, and we gratefully acknowledge the core financial support from our member countries (and lead agencies) including:



Ministry of Agriculture and
Rural Affairs,
People's Republic of China



Agriculture and
Agri-Food Canada



Ministry of Foreign Affairs of the
Netherlands



Schweizerische Eidgenossenschaft
Confédération suisse
Confederazione Svizzera
Confederaziun svizra

Swiss Agency for Development
and Cooperation SDC