



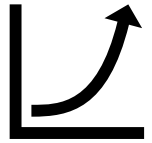
CABI Quarterly Update

Member Country Briefing

Daniel Elger, CEO

22nd June 2023

Headlines



Planning 2024 scale-up of **PlantwisePlus**



Continuing increase in **programme and project delivery**



New **CABI Digital Library** is driving access and usage



Continuing focus on **Member Country engagement**

Agenda

Introduction – CABI's Medium-Term Strategy

PlantwisePlus progress

Landscapes programme concept

Knowledge update

CABI Academy

Finances

Governance and staffing





Improve the food security and livelihoods of smallholder communities

1



Help communities adapt to the impacts of climate change

2



Reduce inequality through better opportunities for rural women and youth

3



Safeguard biodiversity and support the sustainable use of natural resources

4



Increase the reach, application and impact of science in agriculture and the environment

5

Delivery with and for Members...

Programmes and projects

Plantwise/
PlantwisePlus
– 13 MCs

>100 live projects,
across diverse
Member Countries

New ideas and links

Landscapes concept

CarPRISE early
warning proposal
in Caribbean

JUNO incubation
in Pakistan/
Bangladesh

Tech transfer
Pakistan-Kenya

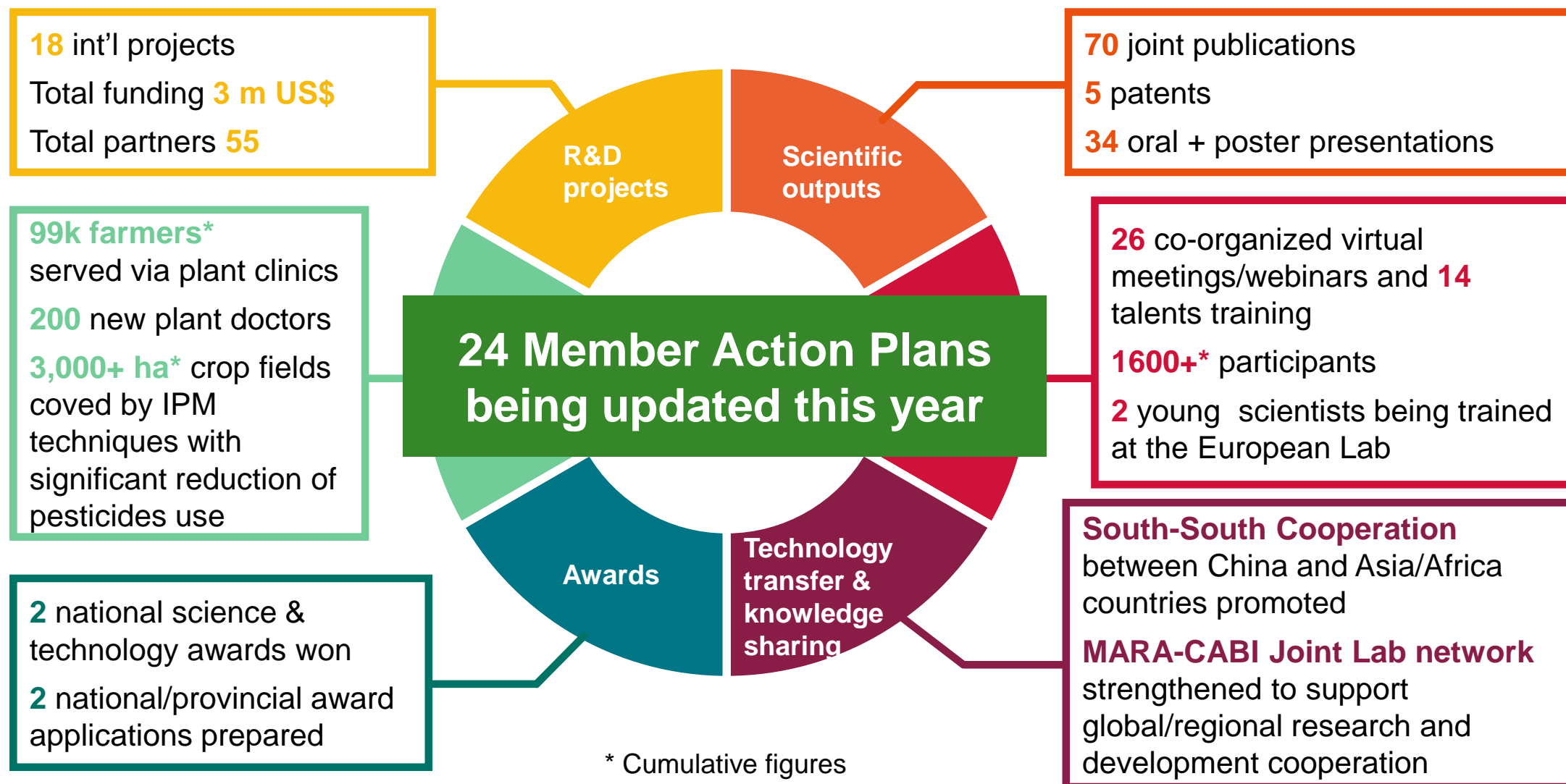
Tailored benefits

Free access to PRA
tool in 29 + training
in 6 MCs

Free/discounted
publishing products

Free microbial
identifications

...captured in Joint Action Plans – results with China (2021-22)





PlantwisePlus

Daniel Elger, CEO



Good progress with PlantwisePlus

Flagship food security & livelihoods programme

Launches in **6 initial focus countries**

- 2022: Ghana, Pakistan, Zambia,
- 2023: Kenya, Bangladesh, Uganda

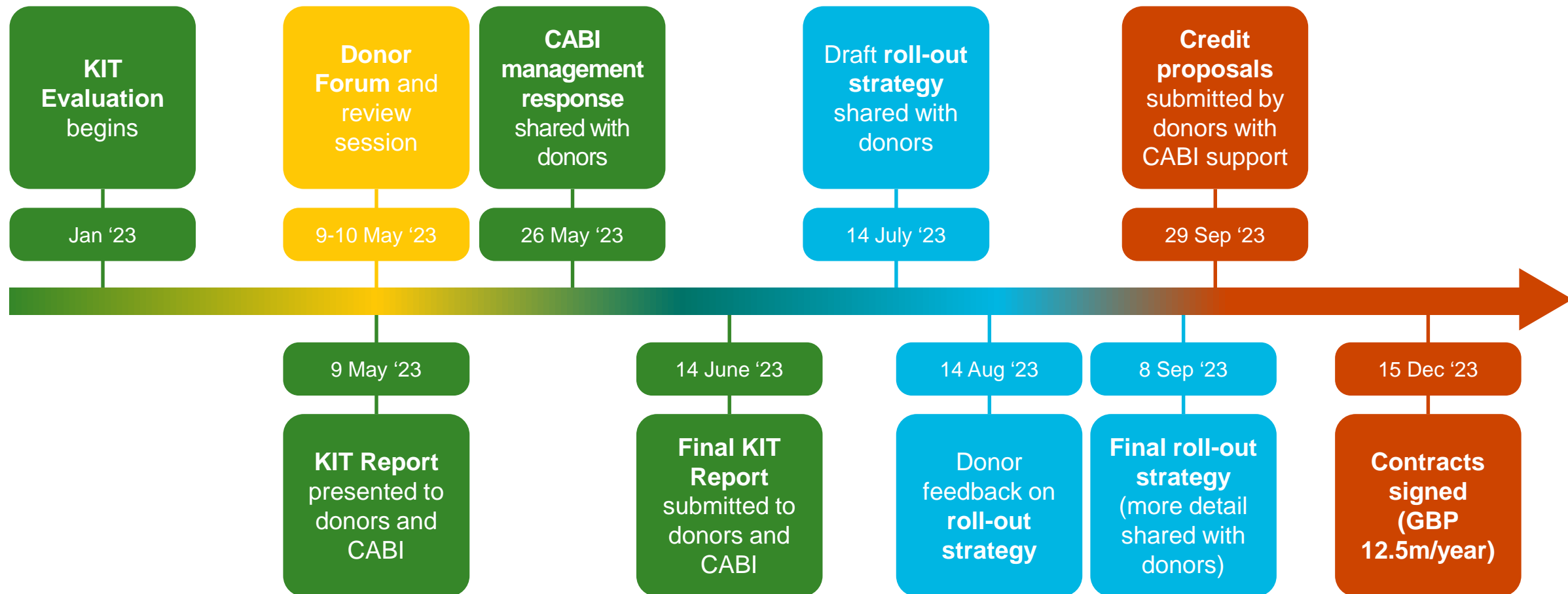
Backstopping in **21 other programme countries**

Approach being **introduced to new countries**

- South Sudan and Papua New Guinea

External review recently completed

Milestones towards scale-up phase starting 2024





Selected 2023 highlights

Gender Analysis and Action Plan formulated

PlantwisePlus Toolkit launched

CABI BioProtection Portal:

- 7 new countries added → 39 in total
- New partners joining Development Consortium
- New and improved site
- 157k site visits (1.2 million since launch)

> 20 new positions in key programme areas



‘Landscapes’

New programme concept in development
Winnie Nunda, Research Officer, Invasive Species Management



Background

CABI has been evaluating the potential for a new programme in ***Integrated Landscape Management***

= long-term collaboration among different stakeholders to achieve the multiple objectives required from the landscape.

→ positive impacts on livelihoods, resource conflicts, climate resilience and environmental sustainability

CABI and Integrated Landscape Management



- Spatial planning for invasive species management
- Stakeholder engagement and coordination across sectors and scales
- Support implementation of invasive species management and land regeneration practices
- Multi-criteria decision support tools



According to the United Nations Environment Programme:

“Achieving the Sustainable Development Goals by 2030 will require a radically different paradigm of development... A new approach that breaks down sectoral barriers, capitalizes on synergies in land uses and human development, and strengthens coordination and participation of a wide range of stakeholders is needed.

Integrated landscape management (ILM) is that approach.”



CABI's landscapes concept

Focus on settings where alien invasive plants are key issue

Build on extensive experience managing invasive species

Build on successful landscape projects like Woody Weeds – and wider experience in participatory processes

Work with Member Countries to identify relevant settings

Initial focus in Africa



Progress and next steps

Initial survey of donor interest encouraging

Planning extensive engagement of MCs and partners

- Refine plans and identify settings

Holding a stakeholder workshop later in 2023

Seeking funding in 2024



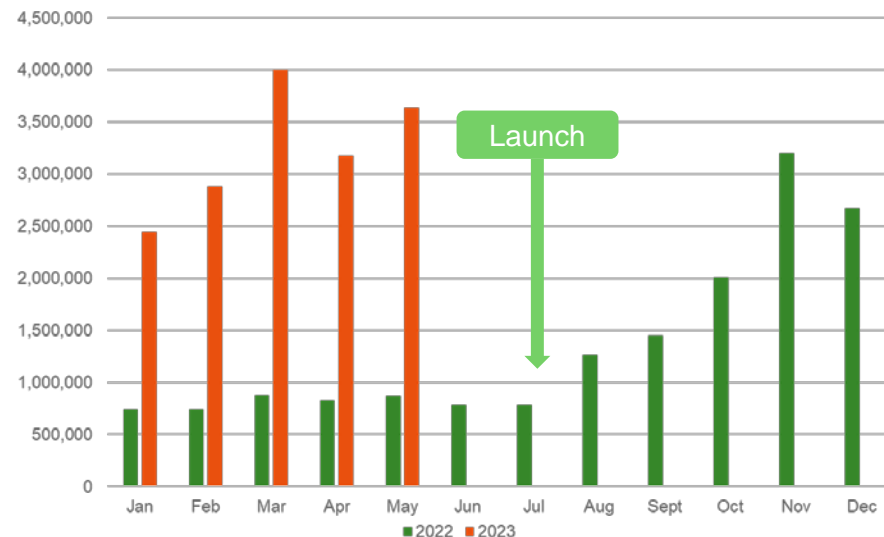
Knowledge update

Andy Robinson, Managing Director, Publishing and Knowledge Business

CABI Digital Library



Total page views by month



Showcasing CABI's knowledge products and services

Mobile access and responsiveness

Launched in July 2022, with phased product migration, completing in September 2023

cabidigitallibrary.org

New products and services, 2023



Journal: ***CABI One Health***



Fully open access

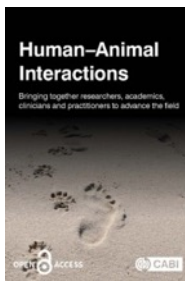
Focuses on the interconnections between humans, animals, plants, ecosystems, and their shared environment



Cases: ***One Health Cases***

Subscription, with OA option

Collection of real-life examples of One Health in practice, a valuable resource for students, academics, practitioners



Journal: ***Human-Animal Interactions***



Fully open access

Focuses on research in all fields related to interactions between non-human animals and their human counterparts



Cases: ***Animal Behaviour & Welfare Cases***

Subscription, with OA option

Practical examples of behaviour and welfare in pets and livestock



Support: ***Invasive Species Discovery Tool***



Fully open access

Power search of species based on distribution, taxonomy, risk and impact factors and pathways of introduction



Cases: ***Plant Health Cases***

Subscription, with OA option

Covers a broad spectrum of subjects from plant pests and diseases to international trade and travel



CABI Academy

Sarah Fleming, Digital Learning Designer

CABI Academy mission

... to improve the quality of advice and service within the agriculture sector.

We combine expertise in **plant health, extension, agricultural research and education** to put science-based expertise into the hands of agricultural practitioners.

CABI Academy courses

Live courses



Coming soon



Under development

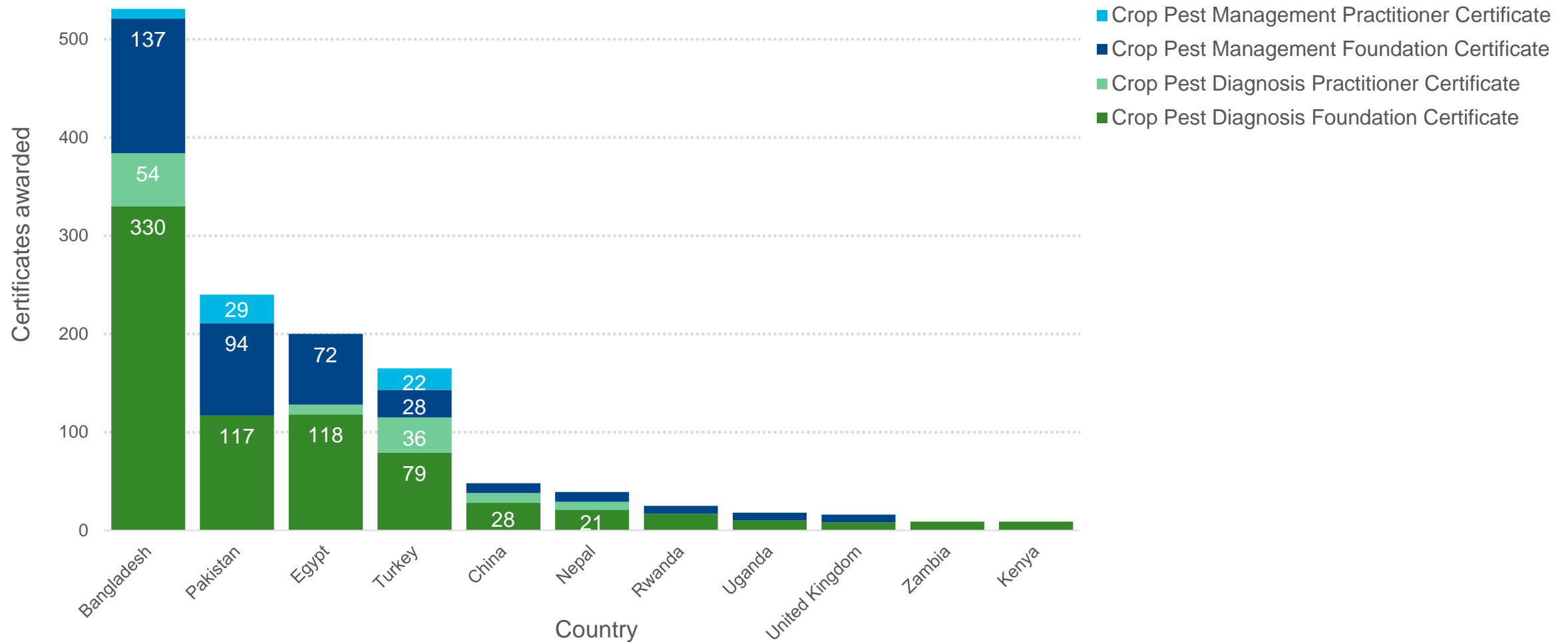
Water Management

Soil Management

Crop Nutrition

Seed and Planting Materials

Certificates awarded – top countries



Financial Performance Update

Rob Sloley, CFO

Financial Summary Year to Date - May 2023

£'000	Net Revenue			Operating Surplus /(Deficit)		
	Actual	Budget Var	Growth vs 2022 %	Actual	Budget Var	Growth vs 2022 %
Knowledge Business	4,625	(23)	4%	1,709	113	(3)%
International Development	8,456	(104)	22%	(239)	(8)	>(100)%
Corporate/Central	1,453	(96)	10%	(1,965)	38	(21)%
Total	14,534	(222)	15%	(495)	143	>(100)%

- Good growth in **Net Revenue** due in particular to the high level of activity in PlantwisePlus although running behind budget because of delays in some other project areas.
- Currently an **Operating Deficit** because of timings of funding and project activity. However, running ahead of budget expectations because of cost savings and interest income. Still expect to produce a small operating surplus by the year- end.



Member Country Fees 2024-26

- At Executive Council we restated, subject to a process of consultation, that we propose to make an inflationary increase to fees from 2024 with the new level fixed for 2024-2026
- That process of consultation is underway but more time is needed to complete the process
- We therefore now intend to present a firm proposal to the Members' briefing in October



UK Pension Scheme update

- Nothing major to note since we last provided an update on the legacy UK Pension Scheme deficit (at the Member Country briefing in January)
- The (UK) Pension Regulator has been in touch with the Scheme's Trustee; we expect some written feedback in July to our 2022 recovery plan submission
- We will keep Member Countries updated as appropriate



Governance and Staffing Updates

Daniel Elger, CEO



Board and ExCo developments

A photograph of two men in a modern office environment. The man on the left is wearing a dark suit and glasses, looking towards the right. The man on the right is wearing a dark jacket and is gesturing with his hands while speaking. In the foreground, there are several vertical bars of different colors (purple, teal, red) that appear to be part of a decorative or functional installation. The background features large windows with a patterned glass design.

Board and ExCo developments

Board and ExCo developments



Afghanistan



Anguilla



Australia



Bahamas



Bangladesh



Barbados



Bermuda



Botswana



British Virgin Islands



Brunei Darussalam



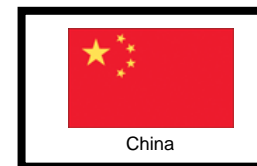
Burundi



Canada



Chile



China



Colombia



Cote d'Ivoire



DPR Korea



Ethiopia



Gambia



Ghana



Grenada



Guyana



India



Jamaica



Kenya



Malawi



Malaysia



Mauritius



Montserrat



Myanmar



Nigeria



Pakistan



Papua New Guinea



Philippines



Rwanda



Sierra Leone



Solomon Islands



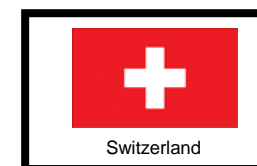
South Africa



Sri Lanka



St Helena*



Switzerland



Tanzania



The Netherlands



Trinidad & Tobago



Uganda



United Kingdom



Vietnam



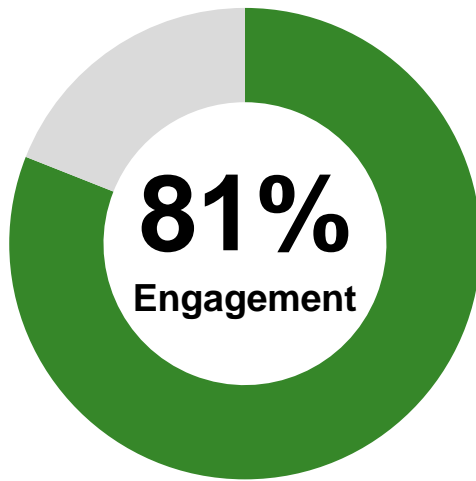
Zambia



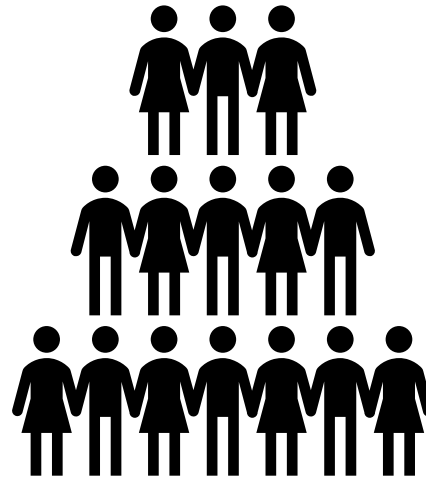
Zimbabwe

Staff developments

WeThrive Survey
2023



486 people



Diversity



Questions and discussion





CABI is an international intergovernmental organisation, and we gratefully acknowledge the core financial support from our member countries (and lead agencies), and key donors including:



Ministry of Agriculture and
Rural Affairs,
People's Republic of China



Agriculture and
Agri-Food Canada



Ministry of Foreign Affairs of the
Netherlands



Schweizerische Eidgenossenschaft
Confédération suisse
Confederazione Svizzera
Confederaziun svizra

Swiss Agency for Development
and Cooperation SDC

