

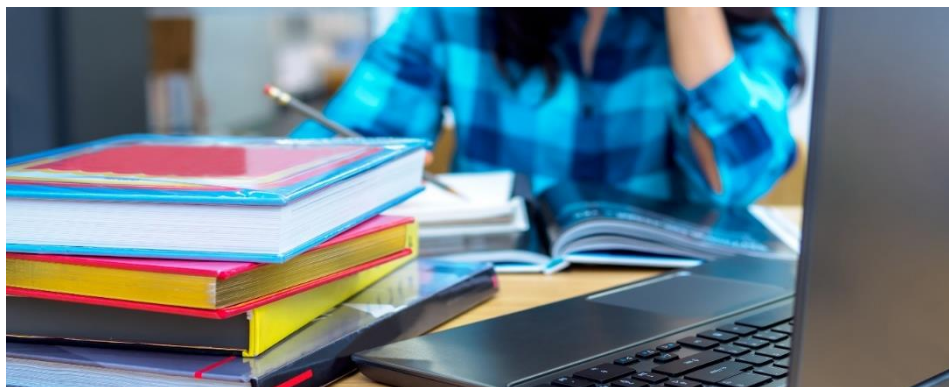


As an academic publisher in the life sciences, CABI helps people discover validated evidence-based information to help them overcome the world's biggest challenges. We invest surpluses from our publishing business back into our development projects, which tackles global poverty and hunger in the face of climate change.

CABI is the only organisation worldwide that incorporates a dedicated publishing arm and an independent science media organisation alongside conducting its own scientific research and applying practical expertise in digital and other approaches to reach farmers and other stakeholders. Our publications in applied life science – including world-leading databases, books, eBooks, compendia and internet resources – help scientists discover credible and authoritative outputs from around the globe. Our tools add insights to data and help people apply science to real-world problems.

Our expertise and skills in publishing help put knowledge into context and put it into the hands of those who need it most. Our learning resources build the capacity of farmers, practitioners and scientists to improve agricultural practices.

You can learn more at:
www.cabi.org



KNOWLEDGE FOR LIFE



Consultancy



Consultancy: Facilitating Dialogue with Food Safety Policy Makers And Regulators In Kenya

Location: Nairobi, Kenya
Duration: 20 days



This assignment is perfect for someone looking to apply their experience and Knowledge within an organisation that is focused on helping to deliver 8 of the Sustainable Development Goals: (1) No Poverty; (2) Zero Hunger; (3) Quality Education; (5) Gender Equality; (12) Responsible Consumption and Production; (13) Climate Action; (15) Life on Land; and (17) Partnerships for the Goals.

Background

Food security and food safety are critical components in the agricultural sector in Africa. It is as crucial to produce safer food as it is increasing quantity. Small scale farmers often resort to using harmful pesticides in efforts to avoid crop loss and mitigate the damaging effects of pests and diseases. Local producers possess limited knowledge of best pest management practices in combating emerging plant health threats and the awareness of devastating implications of toxic chemicals on human health remains relatively low.

The CABI-led PlantwisePlus Programme thus aims to enable smallholder farmers to grow safer and higher quality foods through sustainable crop production. Through one of its objectives, the Programme will more specifically increase the supply of and demand for safer, higher quality and locally produced food in domestic markets.

It will seek to generate awareness of highly hazardous pesticides used in food production with the intent of increasing consumers' demand for safer food. This will in turn motivate small scale farmers to change their production practices to meet required domestic market standards and will be supported to produce higher quality and safer food through facilitating access to low-risk products and practices.

Context of the assignment

The Plantwise Plus program will engage decision makers and relevant stakeholders in a discussion on issues related to food safety in Kenya, with a particular interest in pesticide contamination in order to ensure production and supply of safe food for domestic markets.

To fully engage key stakeholders in meaningful consultations, programme activities have focused on collating evidence of pesticide residues exceeding required levels in various value chains in Kenya. A stakeholder mapping exercise and food safety situation analysis was undertaken in Kenya as an initial step to identifying key stakeholders and current food safety initiatives across key value chains. The situational analysis also analysed the major food safety/pesticide residue issues and the causal factors contributing to these issues through a literature survey including grey literature and key informant interviews.

Additionally, a consumer survey was conducted in Kenya to gain understanding of food safety knowledge, attitudes, and concerns among consumers. The results of the findings have been consolidated in a draft briefing paper with the aim of contributing to ongoing debate on food safety issues in the country.

CABI would therefore like to engage a Consultant to support stakeholder dialogue on food safety, contributing to the achievement of ***Activity 2.1.2: Engage policy makers including those involved in the regulation of biopesticides/pesticides and monitoring maximum residue levels (MRLs) in dialogue concerning food safety issues.***

The assignment will include the facilitation of a series of policy engagement meetings and finalizing, and dissemination of the briefing paper.

Key Deliverables:

1: Facilitate engagement meetings with stakeholders:

- Facilitate a regulatory meeting with critical stakeholders with the aim to:
 - present evidence of pesticide contamination and seek consensus and validation of the findings. This will be based on review of available study reports from CABI on evidence of MRLs, consumer surveys and pesticide risk situation analysis. The presentation will also be enhanced by the Consultant's knowledge and engagement with food safety in particular pesticide risks in domestic markets
 - gather additional information on the structure and content of the briefing paper

2: Develop food safety briefing paper with recommendations for policy and practice:

- Revise the current draft briefing paper (developed by CABI) in view of existing research evidence. The briefing paper should conform to the standards with clear problem description, presentation of evidence and recommendations for policy and practice
- Share the paper with relevant stakeholders and any other identified contacts for critique
- Finalize writing of the paper through a consultative write shop process
- Identify appropriate channels to disseminate the paper to the relevant stakeholder groups.

3: Facilitate stakeholder and policy dialogue

- Working together with a CABI and crucial stakeholders, define objectives of a high-level policy dialogue with regulatory authorities, farmer representatives, consumer associations/representatives, relevant private sector bodies including the agro-input industry and civil society representatives that will also include deliberations on the briefing paper for action
- Facilitate food safety stakeholder and policy dialogue workshop (to bring out core issues and recommendations)
- Finalize writing of workshop outputs in joint effort with the rapporteur.

Timelines:

The Consultant is expected to carry out these tasks for a maximum of 20 working days starting June 2022. After signing of contract, the Consultant together with CABI and other critical stakeholders will agree on dates for an initial stakeholder meeting and policy dialogue. In any case, these activities should be completed by September 30, 2022 including a final briefing paper with recommendations, and policy engagement workshop report.

Work plan

In submitting a bid for this assignment, each consultant is required to present an outline of their proposed approach to executing the assignment, relevant experiences, the fees, as well as an indicative workplan for 20 days from the date of contracting. Applicants should share at least 2 of their works that demonstrate experience in food policy.

ABOUT YOU

Knowledge & Skills

- Well experienced and knowledgeable in Food Safety regulations, agricultural research, and current national and global debates on food safety and in particular pesticide risks
- Good knowledge of policy analysis including food environment policies, with sound analytical, organizational and writing skills
- Experience in working for national or international organizations developing policies, Experience in private sector development would be an added advantage.
- Able to dialogue effectively with a wide range of senior stakeholders in public and private sectors
- Experience in translating and applying agricultural research evidence to identify solutions to problems

EQUAL OPPORTUNITIES

We are a thriving international organisation attracting a diverse range of talented people from around the world. Our staff currently comprises over 30 nationalities and as an equal opportunities employer we welcome applications from candidates irrespective of age, gender, race, colour, nationality, ethnic or national origin, disability, religion, sexual orientation or marital status. No applicant will be disadvantaged by conditions which cannot be shown to be justified and selection will be based on merit.

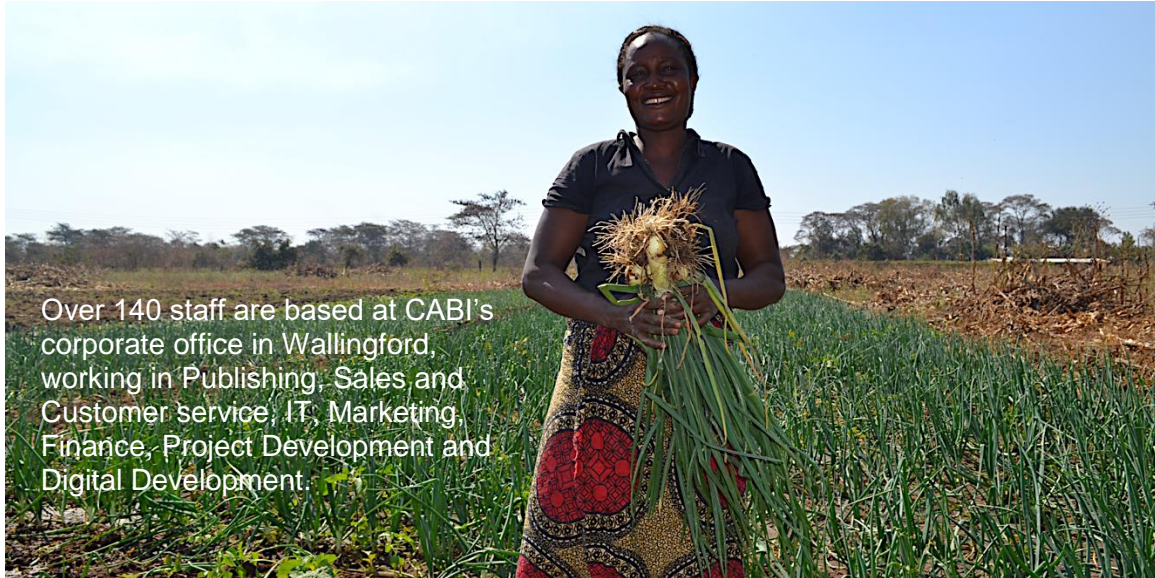
HOW TO APPLY

All documents must be submitted by email to: procurement-africa@cabi.org by close of business **3rd June 2022**.

Only those applicants selected will be contacted. For more information about CABI, please visit www.cabi.org



Visit us on LinkedIn to find out more about working at CABI



Africa

Ghana

CABI, CSIR Campus
No.6 Agostino Neto Road
Airport Residential Area
P.O. Box CT 8630,
Cantonments
Accra, Ghana
T: +233 (0)302 797 202
E:westafrica@cabi.org

Kenya

CABI, Canary Bird
673 Limuru Road,
Muthaiga
P.O. Box 633-00621
Nairobi, Kenya
T: +254 (0)20 2271000/20
E:africa@cabi.org

Zambia

CABI, Southern Africa
Centre
5834 Mwange Close
Kalundu, P.O. Box 37589
Lusaka, Zambia
T: +260 967619665
E:
southernafrica@cabi.org

Americas

Brazil

CABI, UNESP-Fazenda
Experimental Lageado,
FEPAP (Escritorio da
CABI)
Rua Dr. Jose Barbosa De
Barros 1780
Fazenda Experimental
Lageado
CEP: 18.610-307
Botucatu, San Paulo, Brazil
T: +55 (14) 3880 7670
E: y.colmenarez@cabi.org

Trinidad & Tobago

CABI, 59 Gordon Street,
Curepe, St. Augustine
TUNAPUNA 331323

Trinidad & Tobago

T: +1 868 6457628
 E: caribbeanLA@cabi.org

USA

CABI, One Lincoln Street
24th Floor
Boston, MA 02111
T: +1 (617) 682 9015
E: h.jansen@cabi.org

Asia

China

CABI, Beijing
Representative
Office
Internal Post Box 85
Chinese Academy of
Agricultural Sciences
12 Zhongguancun Nandajie
Beijing 100081, China
T: +86 (0)10 82105692
E: china@cabi.org

India

CABI, 2nd Floor, CG Block,
NASC Complex, DP
Shastri Marg
Opp. Todapur Village,
PUSA
New Delhi – 110012, India
T: +91 (0)11 25841906
E: india@cabi.org

Malaysia

CABI, PO Box 210
43400 UPM Serdang
Selangor, Malaysia
T: +60 (0)3 894329321
E: cabisea@cabi.org

Pakistan

CABI, Opposite 1-A,
Data Gunj Baksh Road
Satellite Town, PO Box 8
Rawalpindi-Pakistan

Europe

Netherlands

CABI, Landgoed Leusderend 32
3832 RC Leusden
The Netherlands
T: +31 (0)33 4321031
E: netherlands@cabi.org

Switzerland

CABI, Rue des Grillons 1
CH-2800 Delemont
Switzerland
T: +41 (0)32 4214870
E: europe-CH@cabi.org

UK

CABI, Nosworthy Way
Wallingford, Oxfordshire
OX10 8DE, UK
T: +44 (0)1491 832111
E: corporate@cabi.org

CABI, Bakeham Lane
Egham, Surrey
TW20 9TY, UK
T: +44 (0)1491 829080
E: microbialeservices@cabi.org
E: cabieurope-uk@cabi.org

T: +92 51 9292062/ +92 51
8434979
E: cabi.cwa@cabi.org