



CABI in Asia-Pacific Experience and Perspective

Dr. Babar E. Bajwa
Senior Regional Director – Asia

Our Regional Leadership



Dr Feng Zhang

Regional Director
East Asia & South-East Asia
In charge of CABI Regional Centres
in China and Malaysia



Dr Gopi Ramasamy

Regional Director
South Asia
In charge of CABI Centre
for South Asia-India



Dr Babar E. Bajwa

Senior Regional Director, Asia-Pacific
and Regional Director Central &
West Asia in Pakistan

Membership: 15 member countries in Asia-Pacific region



Afghanistan



Australia



Bangladesh



Brunei Darussalam



China



India



DPR Korea



Malaysia



Myanmar



Pakistan



Papua New Guinea



Philippines



Solomon Islands



Sri Lanka



Vietnam

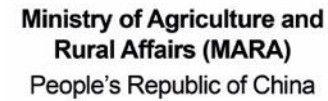
Countries we are working in Asia-Pacific:

1. Afghanistan
2. Australia
3. Bangladesh
4. Brunei Darussalam
5. Cambodia
6. China
7. DPR Korea
8. Fiji
9. India
10. Indonesia
11. Laos
12. Malaysia
13. Myanmar
14. Nepal
15. Philippines
16. Pakistan
17. Papua New Guinea
18. Singapore
19. Solomon Islands
20. Sri Lanka
21. Thailand
22. Vietnam

22 Countries with **15 Member Countries**
Regional Centres in 4 Asian Countries



Key partners and Plantwise donors



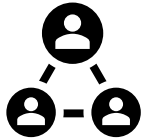
Partnership Experiences in International Development



Global reach and 100+ years of experience.



Membership structure.



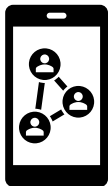
CABI's scientific, information capacity, networking, partner linkages, with other scientific organizations, Governments, private sector and farmers.



Experienced, trained, knowledgeable scientific teams add value in designing and delivering CABI's mission in partnerships.



CABI and partners share systems and innovate for sharing knowledge and experiences among member countries.



Partners benefit from affordable open access resources to maximize outreach of scientific information and knowledge.



Examples of successful partnerships

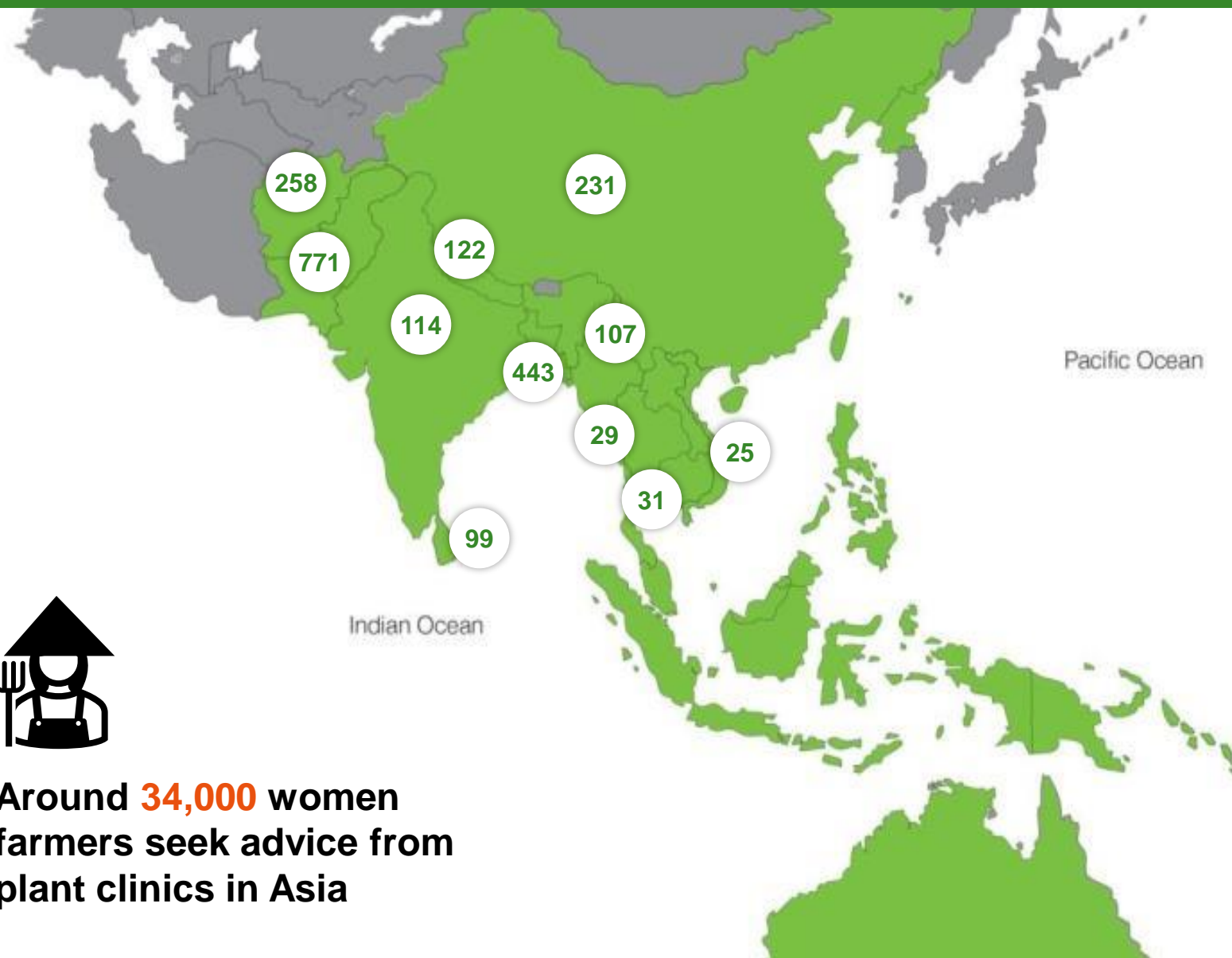
Building Plant Health Systems – Plantwise

1. Afghanistan
2. Bangladesh
3. Cambodia
4. China
5. India
6. Myanmar
7. Nepal
8. Pakistan
9. Sri Lanka
10. Thailand
11. Vietnam

Around **7000**
Plant doctors trained



Around **34,000** women
farmers seek advice from
plant clinics in Asia

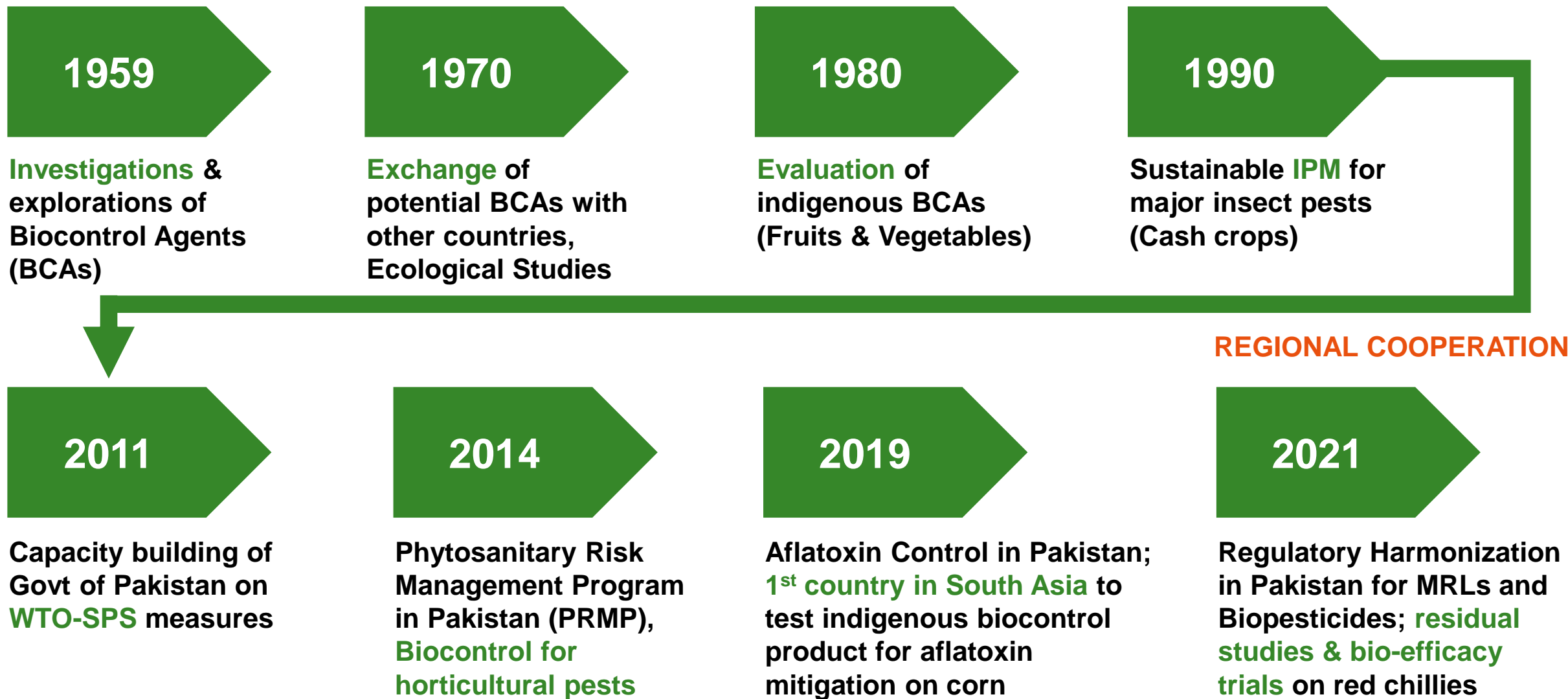


Cooperation Partnership with ACIAR



Collaborative proposal and project development with ACIAR, Country offices and partners

Cooperation Partnership with USDA



CABI-MARA Joint Laboratory in Beijing, China

Functions:

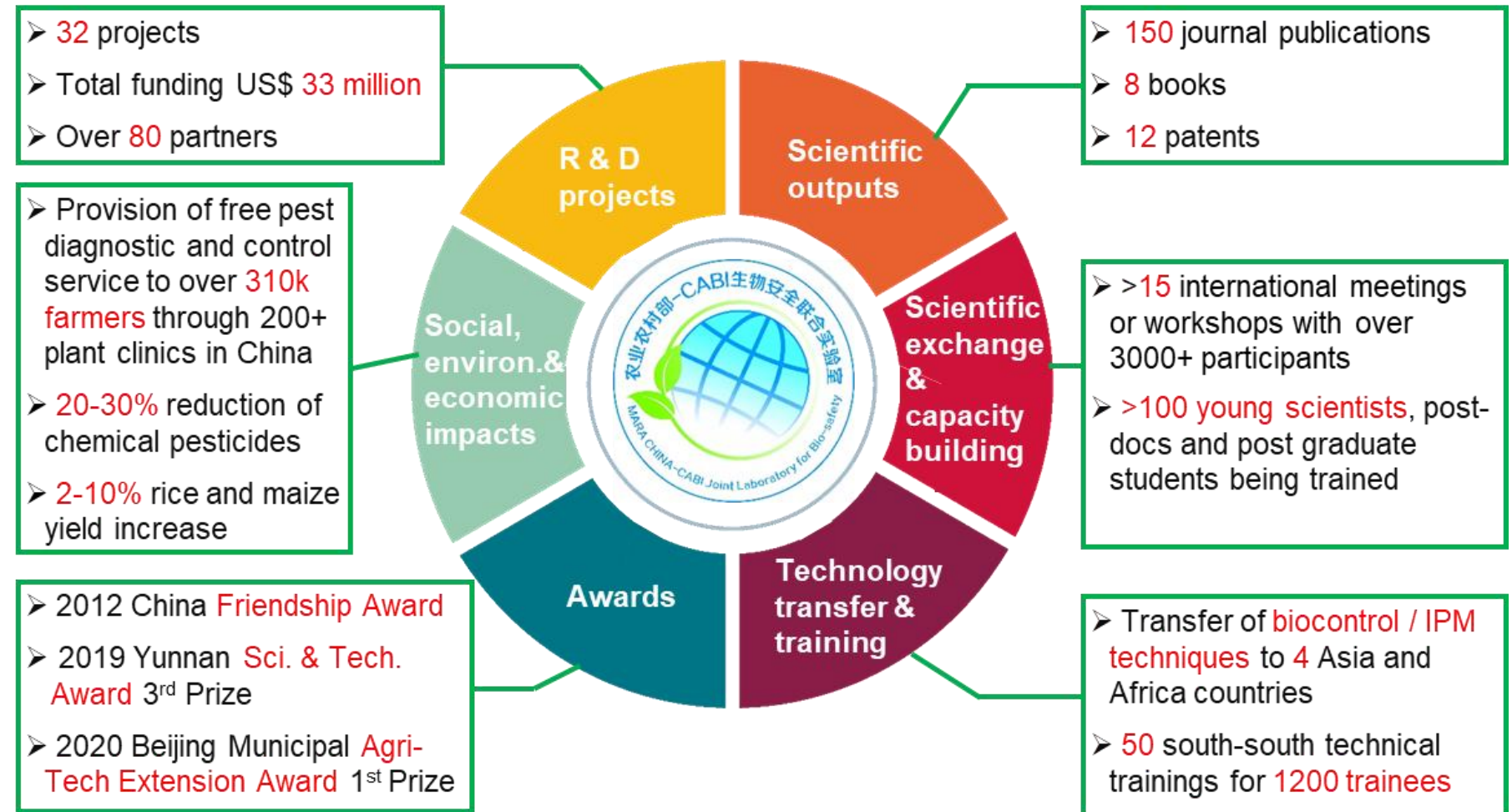
A platform for **research collaboration** and **technology transfer**

A centre for **training and scientific exchange**

An open platform for **joint collaboration** with third parties

A consultancy **service**

Achievements 2008-2021



Cooperation with MARDI



1969

Started as **CIBC** in Sabah

1988

CABI-ARO established through MOU

1995

moved to **MARDI** and co-located with **FAO**

1997

CABI-ARO merged with **CABI IIBC** Malaysia to form **SEARC**

- Malaysia (Joint Lab; FAO-ITPGR; Fall Armyworm Management)
- PNG (Biosecurity Plan for the coconut industry)
- Philippines (Managing potential invasion of Fall armyworm in rice)
- Multiple projects in crop health management (pest and disease management)
- Commodity value chain – SPS, IPM capacity building
- Training and Capacity Building (FFS, IPM, Crop management, Experts Training)



Cooperation with ICAR



1957

Biological Control
(CIBC) established
in Bangalore, India

1988

Ratification of
U.N.Treaty with
CABI by Ministry
of External Affairs,
Govt. of India

1998

MoU Signed between
CABI and Indian
Council of Agri.
Research (ICAR)

2010

Branch Office
established in National
Agri. Science Complex
(NASC), New Delhi

2017

Revised MoU signed to include
CABI's expanded work areas.
Managed through steering
committee, agreed work plan

- ICAR-CABI multiple proposed research projects (pest and disease management)
- FAW and Invasive pest management including support for value chain with focus on – SPS, IPM capacity building



Cooperation with PARC



1957

**Biological Control
(CIBC) established in
Rawalpindi, Pakistan**

1988

**Re-agreement with GoP and
CABI called as Regional
Bioscience Centre**

149

Total studies and cooperation projects implemented to date (113 research and technology projects & 36 development projects).

90%

of the work is with Government

- Plantwise+ now a major collaborative programme
- Innovation, from research to multi-stakeholder partnerships with:-
 - Research Agencies, Extension Systems, International Research and Developmental Organisations, Certifying Bodies, Philanthropies and the farming communities.



Partnership Perspectives for Going Forward (1)

Opportunities to **build partnerships** on sustainable agriculture. Programmes like Plantwise and Plantwise Plus are basic building blocks for sustainable phytosanitary, safer food and smallholder reach in Asia-Pacific.

Further **strengthen access** to Asian Countries for CABI's publishing content and open access publishing products are well known in the region.

Further cooperation to **strengthen joint laboratories** across Asia-Pacific to maximize sharing of knowledge and technology for member countries.

Consolidate smallholder horticultural value chain work, with more member countries and farmers especially household women.

Partnership Perspectives for Going Forward (2)

Further investigate opportunities to **promote linkages on new and emerging FAO & IPPC initiatives**, to build capacity within Asian Member Countries.

Agree mechanisms to **promote advance versions of PRA, Horizon scanning, pest smart, CABI Academy** to enhance member country capacity on building resilient plant health, SPS and knowledge-based system.

Explore opportunities across Asia for **integrated approaches to sustainable landscapes**.

Our Asian experiences are in harmony with the recommendations from Member Country Survey. This helps team Asia to go ahead with more confidence.



CABI is an international intergovernmental organisation, and we gratefully acknowledge the core financial support from our member countries (and lead agencies) including:



Ministry of Agriculture and
Rural Affairs,
People's Republic of China



Agriculture and
Agri-Food Canada



Ministry of Foreign Affairs of the
Netherlands



Schweizerische Eidgenossenschaft
Confédération suisse
Confederazione Svizzera
Confederaziun svizra

Swiss Agency for Development
and Cooperation SDC