



CABI's Medium-Term Strategy 2023–2025

27–28 September 2022

Dr Daniel Elger, Chief Executive Officer, CABI

**To improve people's lives
worldwide by providing
information and applying
scientific expertise to solve
problems in agriculture and
the environment**

MISSION

VISION

VALUES

**Our vision is a world where
the sharing of agricultural
and environmental
knowledge empowers people
and protects the planet**



MISSION

VISION

VALUES

We believe in long-term solutions

We are objective and impartial

We care about people

We are committed to sharing knowledge

We view partnerships as key to success

How we develop our strategy



Member country needs



Donor priorities



CABI expertise

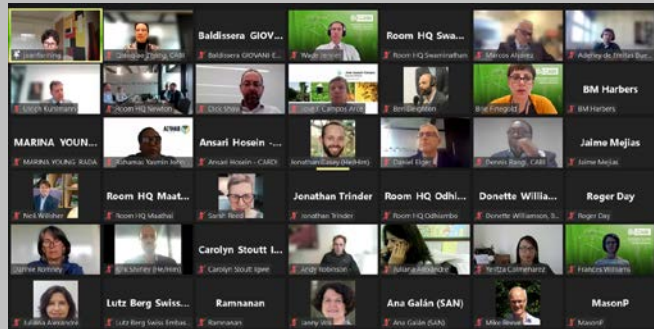


Political, Economic and Social Environment

How we develop our strategy



Listening to our Member Countries



CABI works on the biggest challenges facing humanity –

hunger, **poverty**, **gender inequality**,
climate change and the **loss of biodiversity**





Improve the
food security
and
livelihoods of
smallholder
communities

1



Help
communities
adapt to the
impacts of
climate
change

2



Reduce
inequality
through better
opportunities
for rural
women and
youth

3



Safeguard
biodiversity
and support
the
sustainable
use of natural
resources

4



Increase the
reach,
application
and impact of
science in
agriculture
and the
environment

5



Improve the food security and livelihoods of smallholder communities

How will we make a difference?

Support sustainable food production

Predict and prevent pest threats to crops

Open new channels to farmers

Improve farmers' access to markets

How will we know we made a difference?

Increased food security



How will we know we made a difference?

Increased yield



How will we know we made a difference?

Increased income



How will we know we made a difference?

Increased volume and value of trade





Help communities adapt to the impacts of climate change

How will we make a difference?

Increase adaptive capacity of farmers and businesses

Develop pest & disease analytics incorporating climate risks

Manage invaded landscapes to increase climate resilience

Research new approaches to climate adaptation

How will we know we made a difference?

More farmers adopting climate-smart approaches



How will we know we made a difference?

Increased adaptive capacity of individuals and organisations



How will we know we made a difference?


Increased area under sustainable land management



How will we know we made a difference?

Landscape management plans incorporating climate resilience





Reduce inequality through better opportunities for rural women and youth

How will we make a difference?

Create new income opportunities for women and youth

Ensure equitable access to advisory services

Shift social norms towards equality

Enhance technology adoption by women and youth farmers

How will we know we made a difference?

More women empowered



How will we know we made a difference?

More women with a say in key farming inputs



How will we know we made a difference?

More women and youths with income from agri-services



How will we know we made a difference?

More farmers adopting gender equitable norms





Safeguard biodiversity and support the sustainable use of natural resources

How will we make a difference?

Develop landscape-scale invasive species strategies

Provide nature-based solutions to pests and diseases

Apply CABI's data and collections in conservation efforts

Find new ways to utilise biodiversity

Work with Member Countries on local biodiversity

How will we know we made a difference?

Increased area under sustainable land management



How will we know we made a difference?

Landscape management plans incorporating nature-based solutions



How will we know we made a difference?

Greater number of successful biocontrol introductions



How will we know we made a difference?

More microbial strains provided from CABI's collections



How will we know we made a difference?

More CABI collection species with identified utility



A woman with long brown hair, wearing glasses and a white surgical mask, is working in a laboratory. She is wearing a white lab coat and is focused on a task, possibly using a pipette or a small instrument. The background shows laboratory equipment and framed images on the wall. A large blue number '5' is overlaid on the left side of the image.

**Increase the reach, application
and impact of science in
agriculture and the environment**

How will we make a difference?

Optimise translation of research into policy and practice

Work with MCs to expand local technical capacities

Expand the reach of CABI's products & learning resources

Increase output of *SciDev.Net* on science for development

How will we make a difference?

Support evidence-based approaches

Champion the FAIR principles for development data

Contribute to novel scientific & social scientific research

How will we know we made a difference?

More stakeholders reached by CABI outputs



How will we know we made a difference?

Policy impacts linked to CABI's work



How will we know we made a difference?

More stakeholders reached with agricultural advice



How will we know we made a difference?

More farmers adopt improved practices



How will we know we made a difference?

Greater value of donor investments under FAIR principles





Harnessing CABI's expertise

"Making knowledge useful"



Partnership for delivery

Reflecting Member Country input

There is an urgent need to build **advisory and training capacity** to ensure farmers get the information and support they need

Increased awareness and prudent management of biodiversity and natural resources by **safe use of pesticides, IPM and other sustainable environmental management practices** in communities

The biggest priority is helping rural communities **taking adaptation and mitigation measures to minimize the impact of climate change on agricultural production**

Transfer of agricultural technology between member countries to improve [its] reach, application and impact

Mobilize agro-input dealers as advisors on and suppliers of sustainable crop protection solutions.

To identify **women and youth organizations** for inclusion in the food production systems

Conservation of biodiversity is one of the biggest priorities to support green development and ecological conservation. **CABI's work on invasive species management fits this goal very well**

Providing **knowledge and education to researchers and smallholders** for **sustainable farming practices** including managing natural resources and pest control.

Improve their crop yields, tackle pests and diseases and find safer alternatives to pesticides.

Address **gender inequalities** in access to, and uptake of, **advisory services and technology** through **targeted approaches to the development and promotion** of these goods

Expand and extend the reach of **CABI's Publishing and Knowledge products and learning resources**

Efforts to **improve national plant health systems**

Education of grassroots people is critical. Expansion of CABI's PlantwisePlus program and the CAS program is encouraged

Reflecting Member Country input



Nutrition security versus food security



Indigenous knowledge, making smallholders partners in science



Capacity building



Local ownership of biodiversity



Agroecosystem diversification

Reflecting member input: partnerships

Complement national systems

Collaborate more with CGIAR and FAO

Be aware of partnership costs



PlantwisePlus

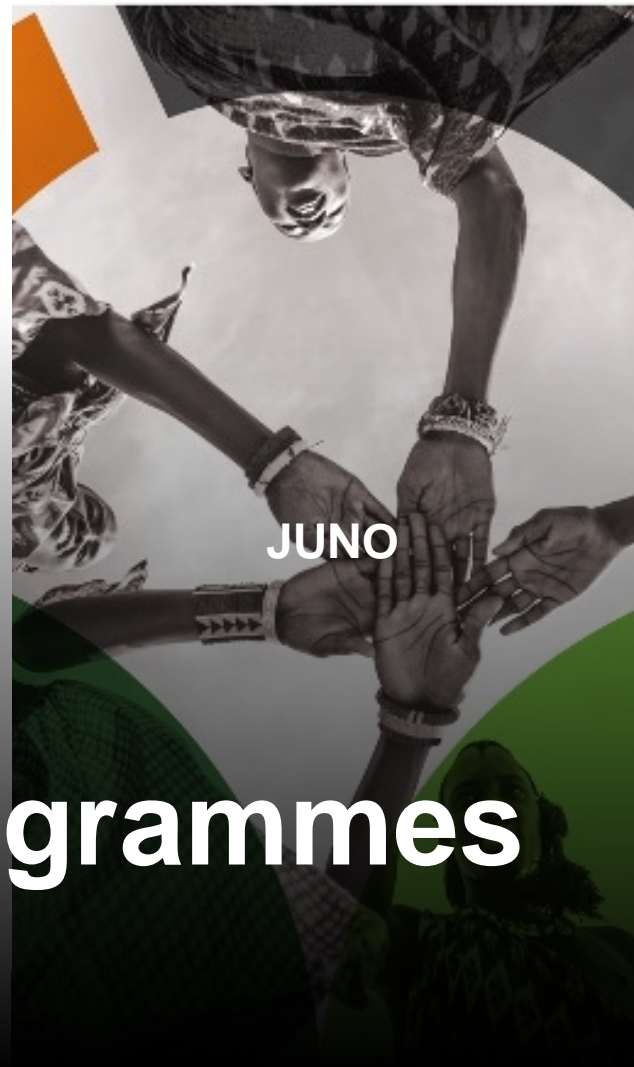


Global Burden of Crop Loss

THIS IS A BIG PROBLEM

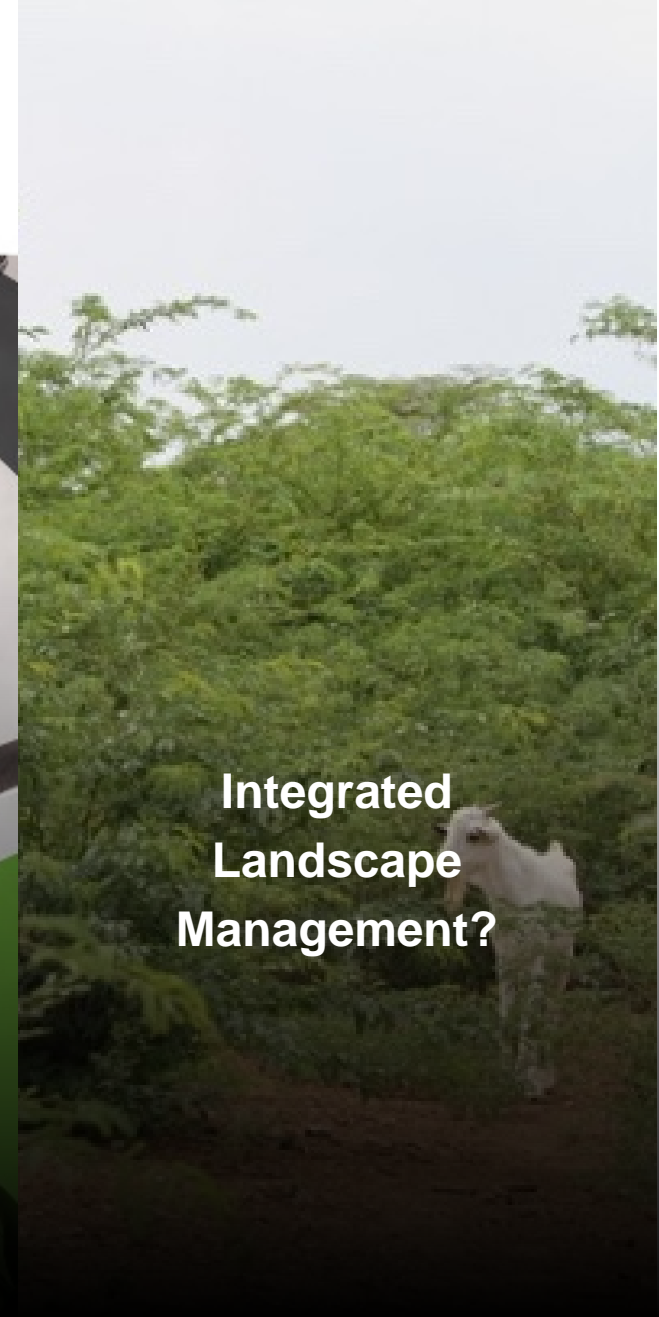
Major programmes

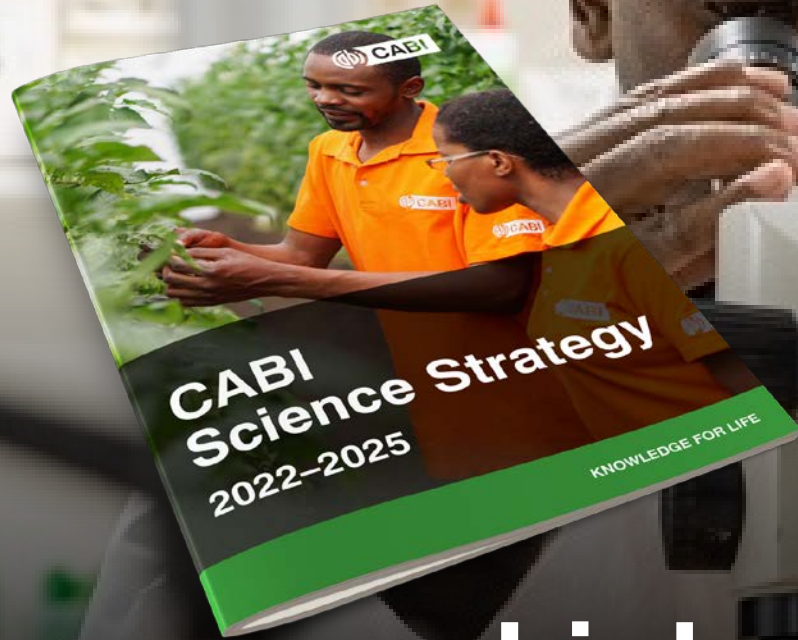
JUNO  Transforming Evidence for Agriculture, Food and Climate



JUNO

Integrated Landscape Management?





Links to Science Strategy

Funding

Donor diversification

Growing publishing revenues

Member country support

Delivery

Expanded skills base

Greater local presence

More representative and diverse team

Continuing drive for One CABI





CABI is an international intergovernmental organisation, and we gratefully acknowledge the core financial support from our member countries (and lead agencies) including:



Ministry of Agriculture and
Rural Affairs,
People's Republic of China



Agriculture and
Agri-Food Canada



Ministry of Foreign Affairs of the
Netherlands



Schweizerische Eidgenossenschaft
Confédération suisse
Confederazione Svizzera
Confederaziun svizra

Swiss Agency for Development
and Cooperation SDC