

Pacific Community (SPC) efforts towards the promotion of ecologically sound pest management in the Pacific region

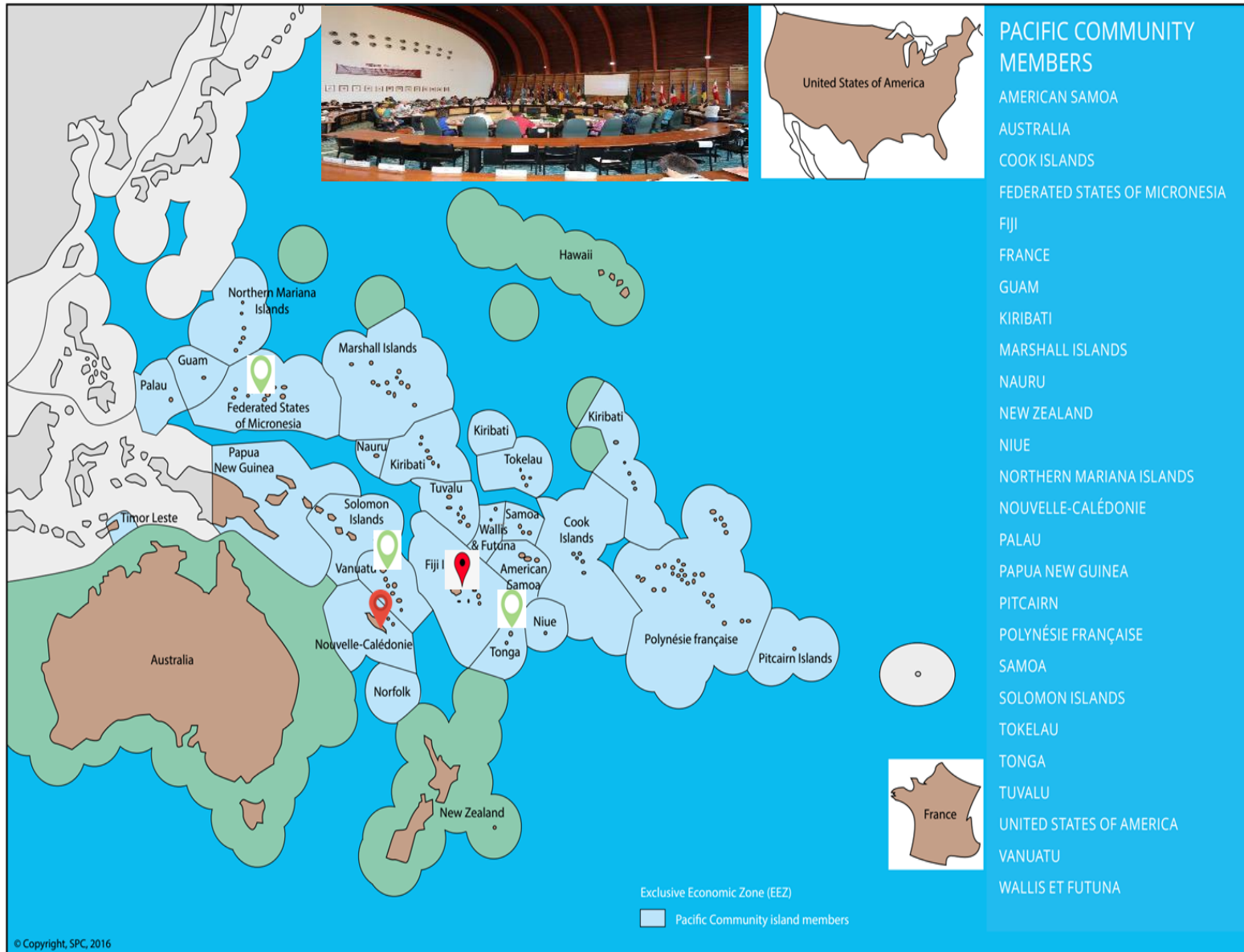
**Regional Consultation Meeting of CABI's Asia-Pacific Member
Countries**

Palm Garden Hotel, IOI Resort, Putrajaya, Malaysia

18-20 February 2025

Mark Ero
Entomologist
Land Resources Division
(LRD), Pacific Community
(SPC), Suva, Fiji

The Pacific Community (SPC)



- Founded in 1947 (78th birthday a week ago)
- Three sub-regions (Micronesia, Melanesia, Polynesia)
- Head office in New Caledonia, Regional office in Fiji, and sub-regional office in FSM, Vanuatu and Tonga.
- 27 members (including funding members - Australia, France, USA, New Zealand, UK)

Divisions and Programmes in SPC



Climate Change
Flagship
Programme



Educational Quality
& Assessment
Programme (EQAP)



Fisheries,
Aquaculture &
Marine Ecosystem
(FAME)



Geoscience,
Energy &
Maritime (GEM)



Human Rights &
Social
Development

All
agricultural
programmes



Land Resources
Division (LRD)



Public Health Division
(PHD)



Statistics for
Development



Integrated
Programmes

Key Donor Partners



Australian Government

Australian Centre for
International Agricultural Research



NEW ZEALAND
FOREIGN AFFAIRS & TRADE
Manatū Aorere



Australian Government

Department of Foreign Affairs and Trade



USAID
FROM THE AMERICAN PEOPLE



**European
Union**

Promotion of IPM/IPDM by SPC



- A lot of what happens in the region is determined by its geographical make up and the isolation.
- No pesticide specific policy but SPC has programmes that advocate for judicious use of pesticides and the promotion IPM/IPDM programmes for the region.

Technical support initiatives/programmes within the LRD



Centre for Pacific Crops
and Trees (CePact)-
Tissue culture
germplasm collection



Physical Containment Level 3
(PC3) Plant Health
Laboratory- biocontrol mass
rearing and pesticide
resistance screening.

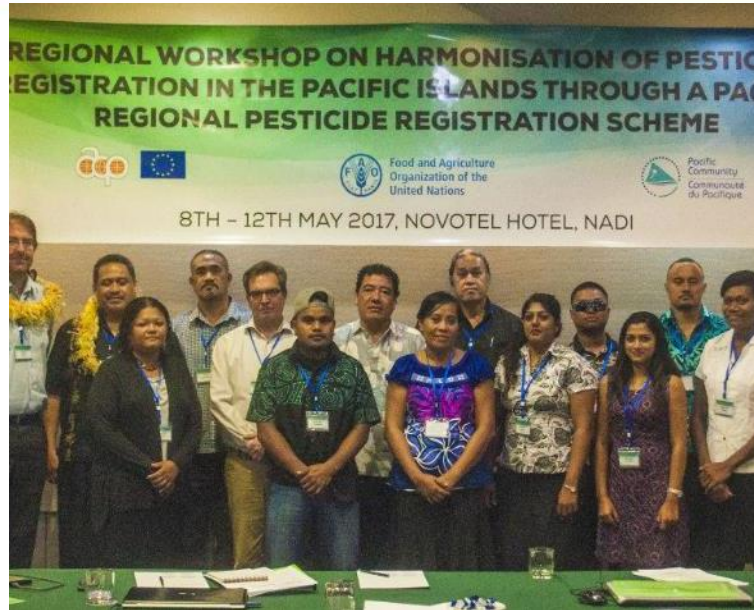


Pacific Organics and Ethical
Trade Community
(POETCOM)

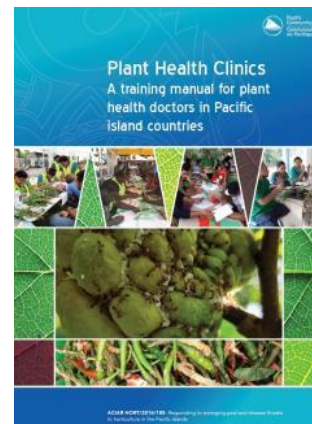


Pacific Plant Protection
Organisation (PPPO)-
comprising NPPOs aligns with
IPPC (Biosecurity matters)

Regional Programme partnership



Pacific Regional Pesticide Registration Scheme (PRPRS)
in Partnership with FAO- Push for biopesticides and PDP



Responding to emerging pest and disease threats to horticulture in the Pacific Islands- ACIAR funded- IPM focused

Regional Programme partnership



**Pacific Awareness
and Response to the
Coconut Rhinoceros
Beetle- Biocontrol
focus (MFAT funded)**



**Protected Cropping
Project (ACIAR
funded)- use of
physical barrier to
prevent pests**

Regional program partnerships



KIWA Initiative Project-
Multi donor funded-
Partnership with SPREP &
GGGI, (climate change
adaptation through
nature-based solutions)

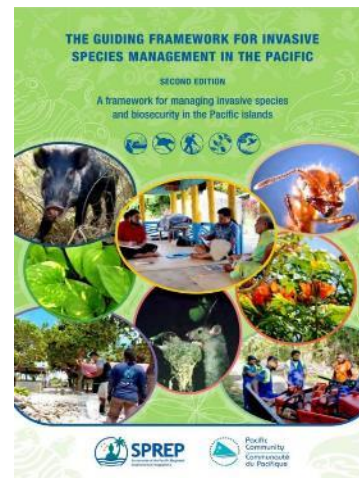


**Promoting Pacific Islands
Nature-based Solutions
(PPIN)-** MFAT funded
(Climate change and
nature-based solutions)

Regional program partnerships



One Health Programme
(Animal and
Environmental Health)



Regional partnership with
Secretariat of the Pacific Regional
Environmental Programme
(SPREP) for invasive species
management (biocontrol of
weeds)

Conclusion



SPC values

Acknowledgement

The CABI and the meeting organising committee is thanked for the opportunity to attend the meeting, present and contribute to the discussions.

