



Panel session:

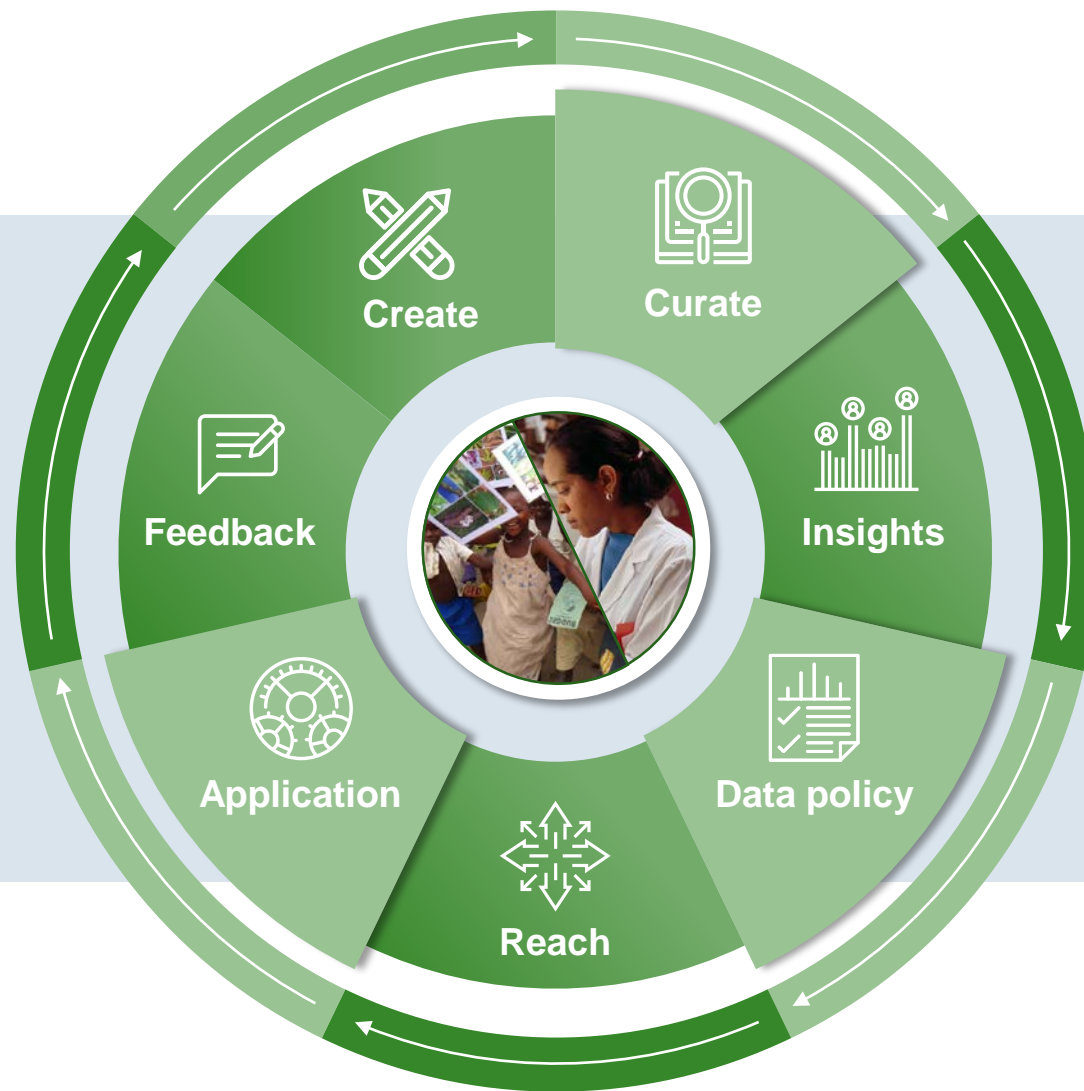
Increasing the reach, application and impact of science in agriculture and the environment

Speakers: Ben Deighton, Cambria Finegold, Dr Martin Parr, Dr Dannie Romney, Alvaro Valverde

Chair: Dr Andy Robinson

The 'One-CABI' context

CABI creates, curates and transforms research findings to generate knowledge that is used by farmers and others that need it

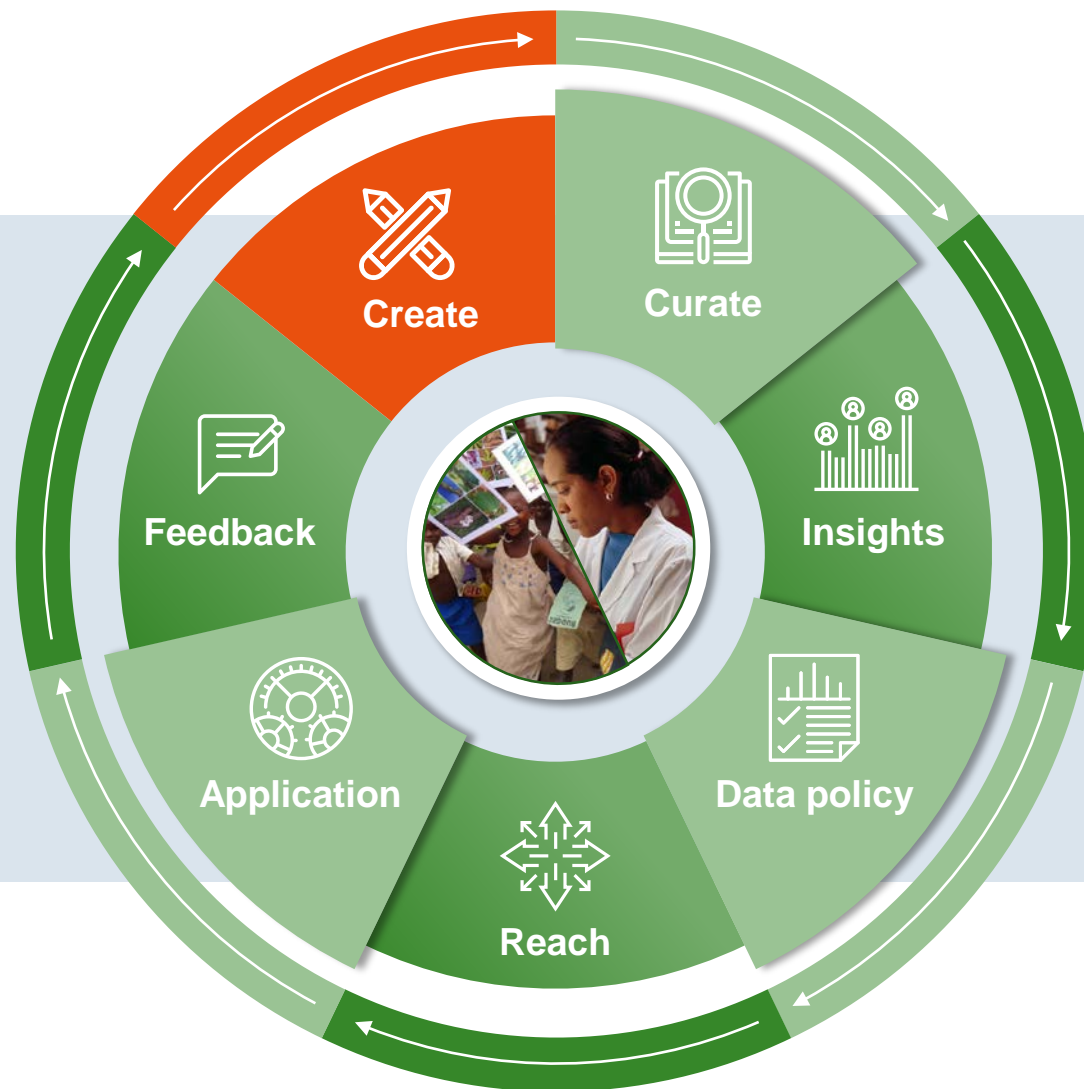


CABI capabilities and experience



Create

Conduct and publish high-quality research in biological and social science,

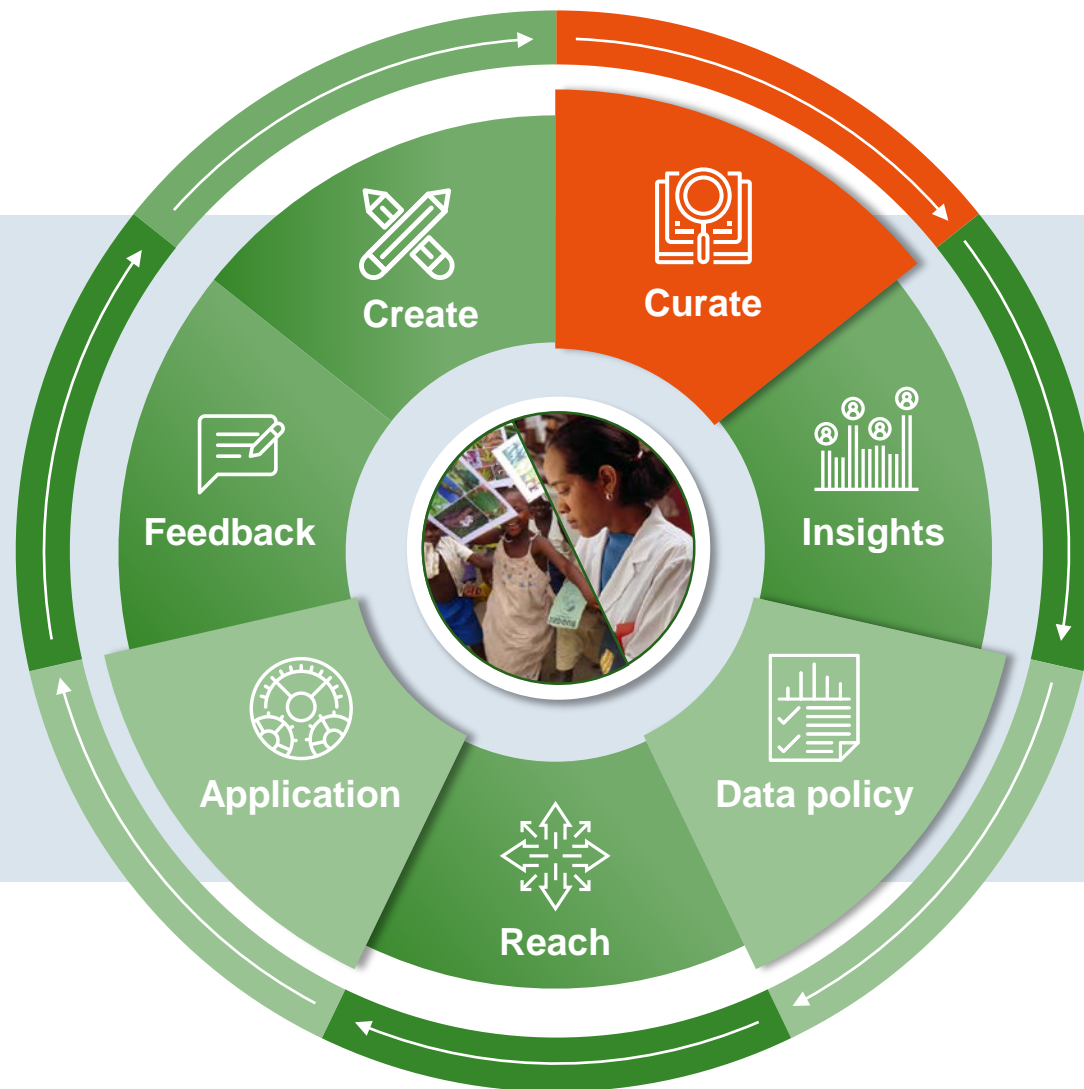


CABI capabilities and experience



Curate

Equip researchers, students and practitioners with up-to-date knowledge and skills

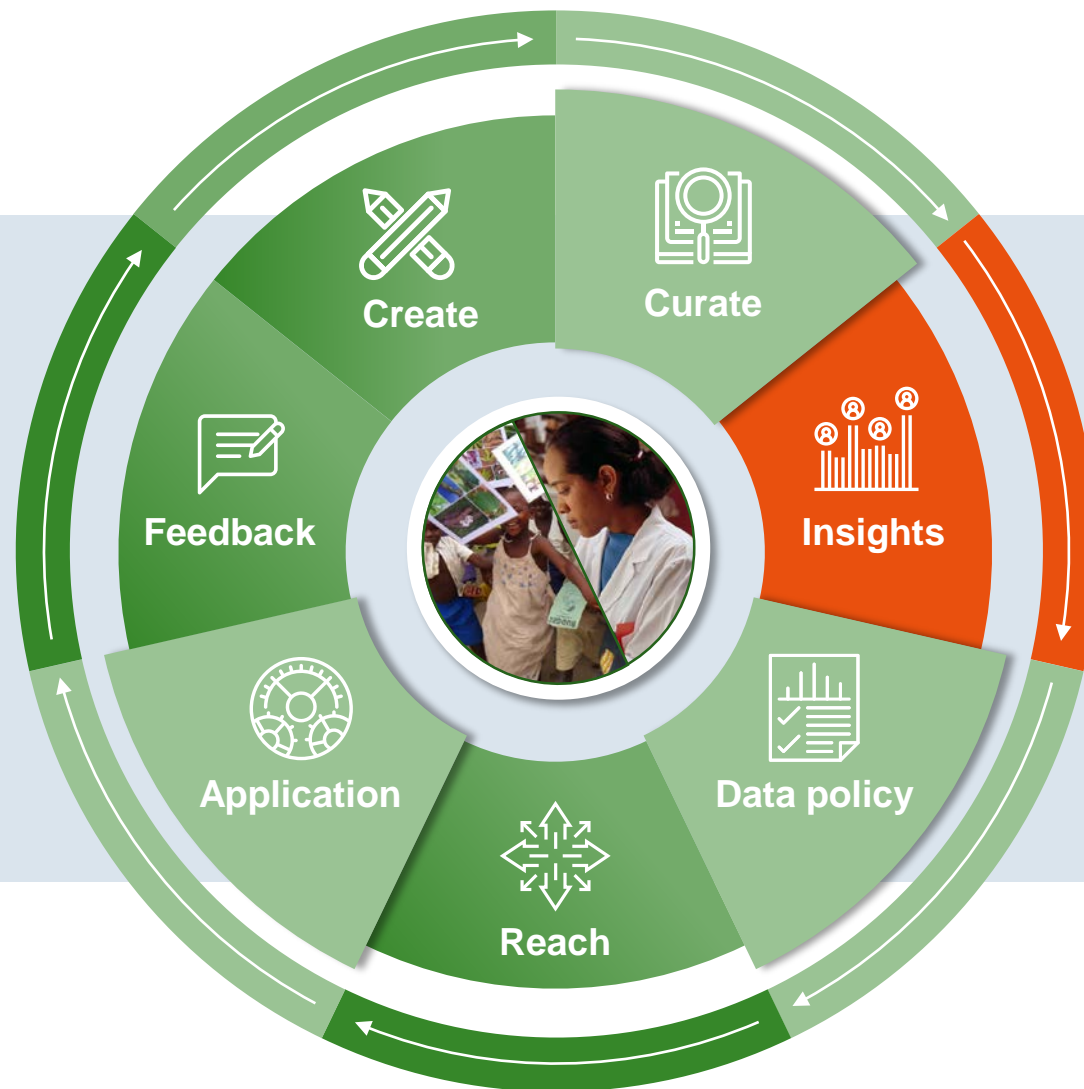


CABI capabilities and experience



Insights, Synthesis and Evidence

Support evidence-informed decision-making



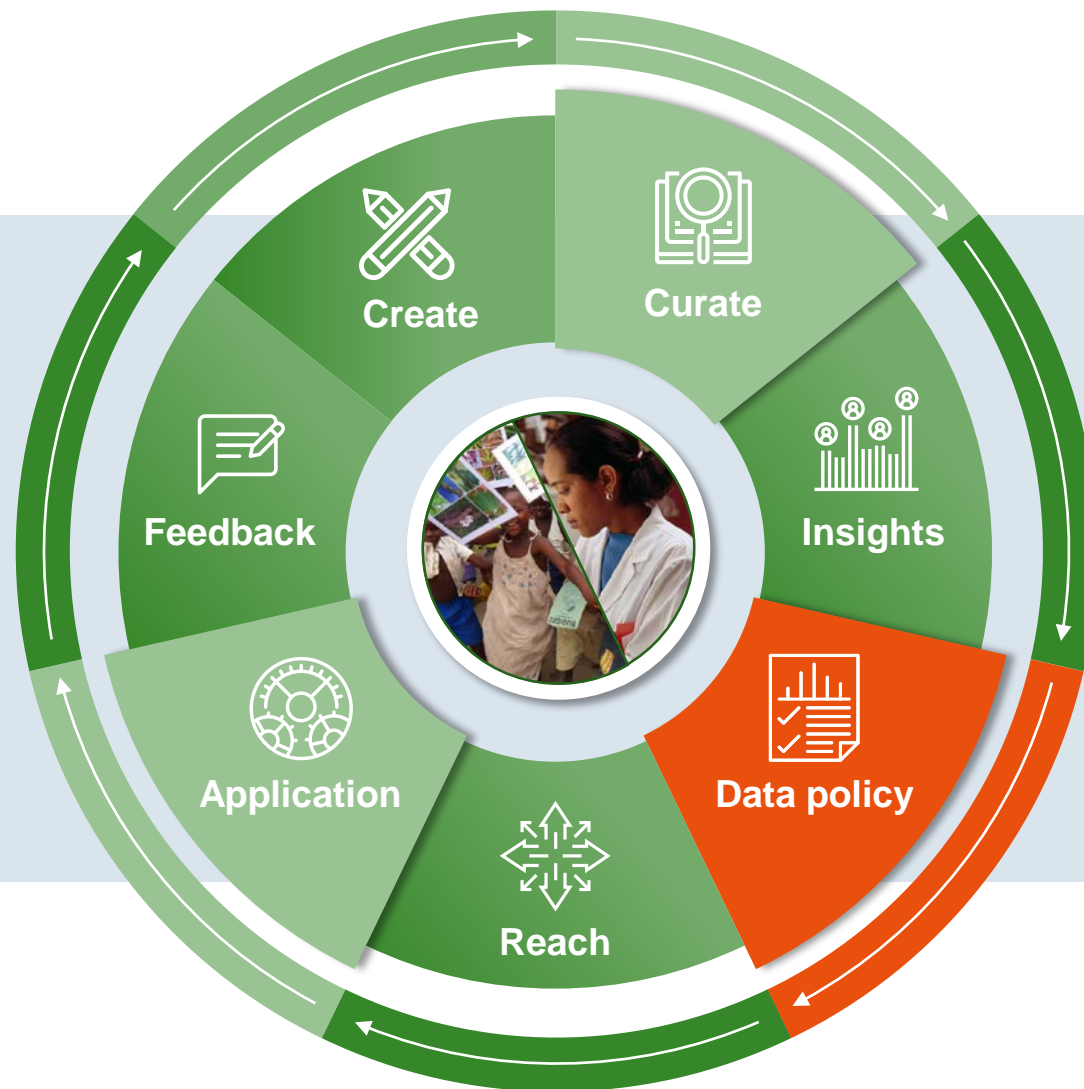
CABI capabilities and experience



Shaping data policies and practices

FAIR

(findable, accessible, interoperable and reusable)

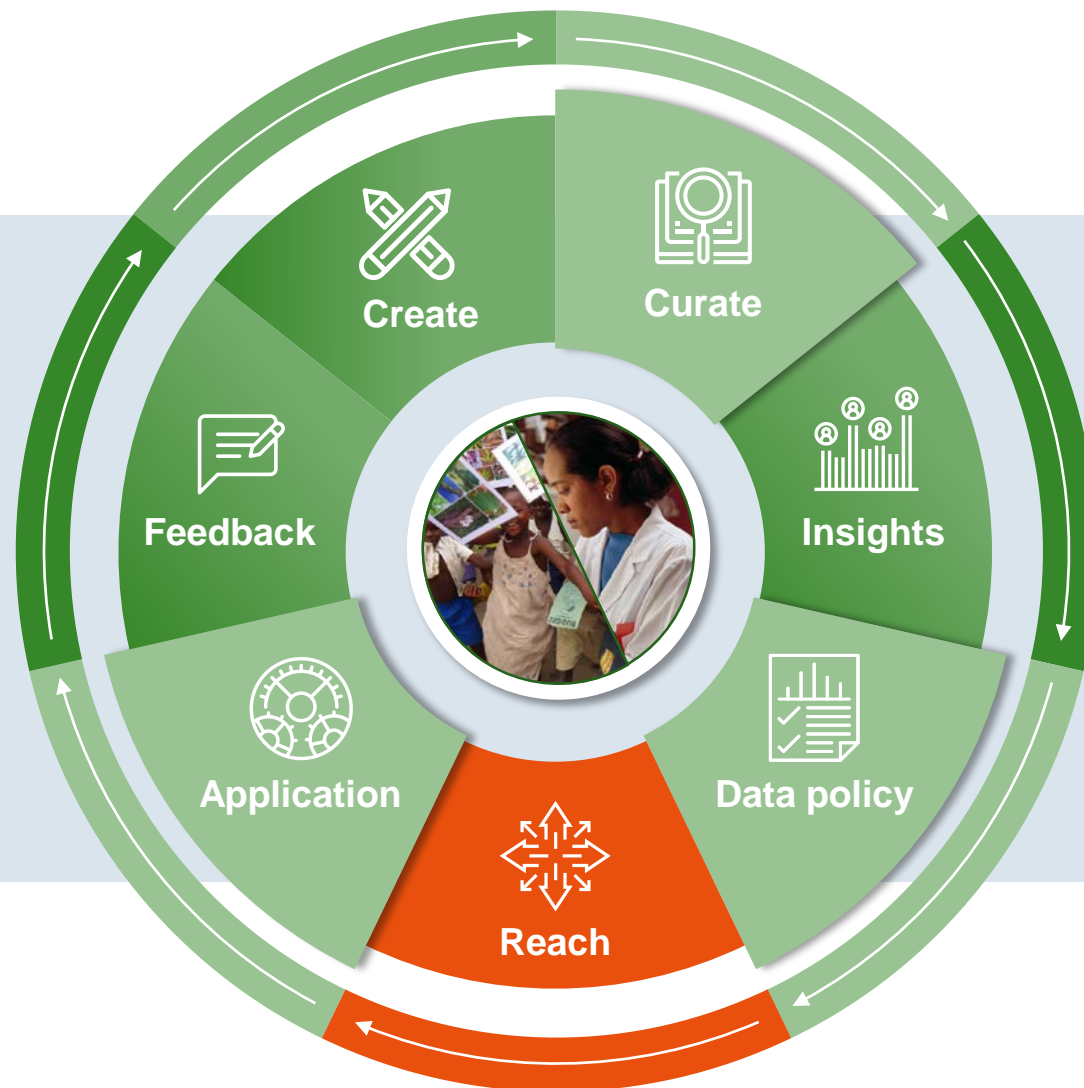


CABI capabilities and experience



SCIDEV.NET

the need for research to be heard beyond the confines of academic journals and conferences

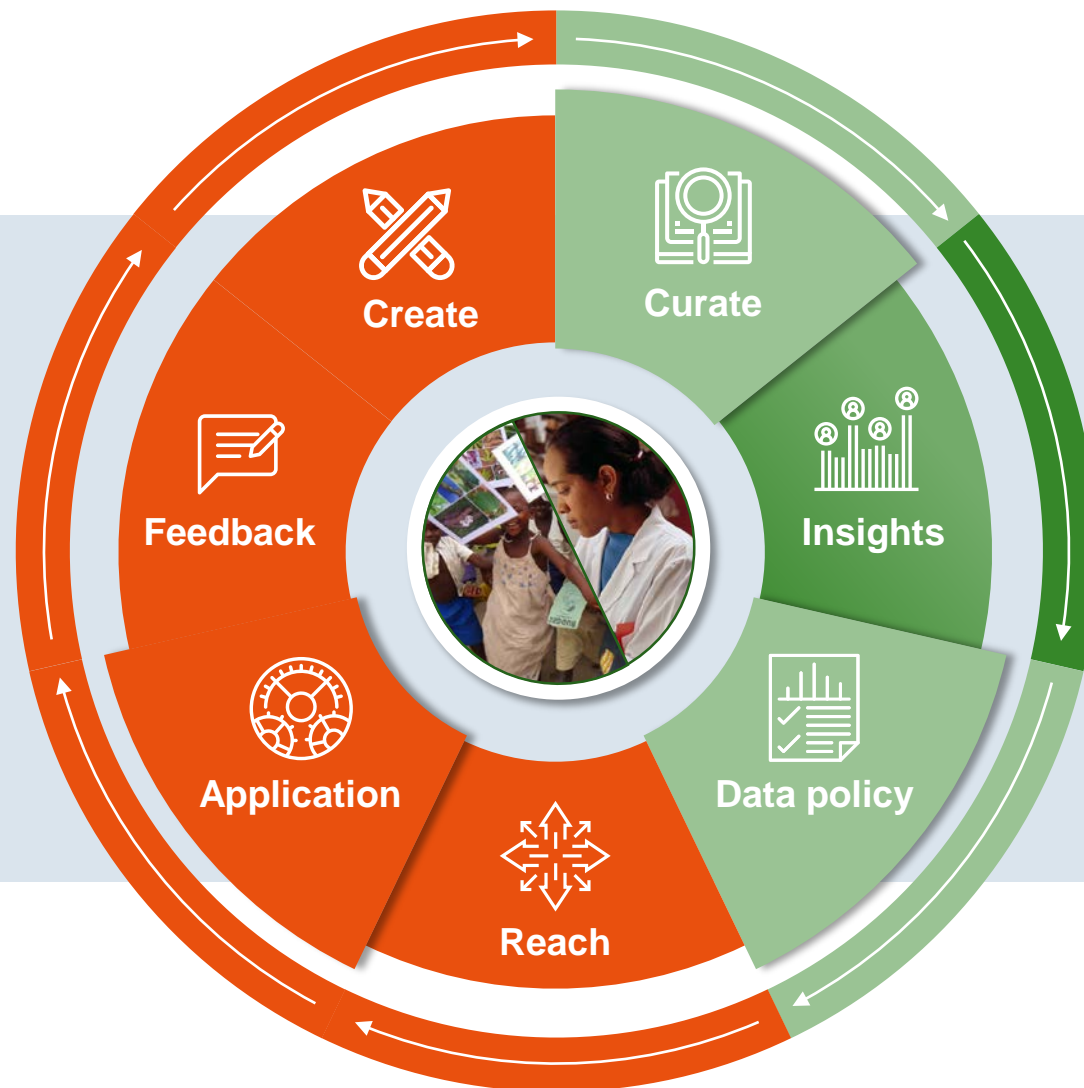


CABI capabilities and experience



CASA

Evidence generation to respond to investor needs & advocacy using that evidence



CABI capabilities and experience



Development, Communication and Extension

Dialogue to support adoption of science-based practices, policies and technologies as well as positive social behavioural change

