



# Plantwise implementation in Asia: Progress, Opportunities and Challenges

Malvika Chaudhary  
PW Regional Coordinator for Asia

CABI Regional Consultation  
4 – 6 November, 2015  
Kuala Lumpur, Malaysia

LOSE LESS, FEED MORE  
[www.plantwise.org](http://www.plantwise.org)





## How Plantwise works

- ✔ Success of Plantwise depends on partnership with plant health stakeholders at national, regional & global levels
- ✔ Through partnerships Plantwise works:
  - ✔ with existing government structures
  - ✔ to strengthen linkages for complementarity of institutional efforts to strengthen national plant health systems despite potential conflict of mandates & overlapping roles





## Plantwise components

- 🌿 **Networks of plant clinics** – document plant health problems, give advice to farmers & facilitate vigilance on pests
- 🌿 **Knowledge bank** – an online resource, continuously updated according to user needs for pest diagnosis, mapping pest distribution & information on plant health management
- 🌿 **Monitoring & evaluation** – systematic assessment of performance & measurement of progress



# Current Plantwise countries



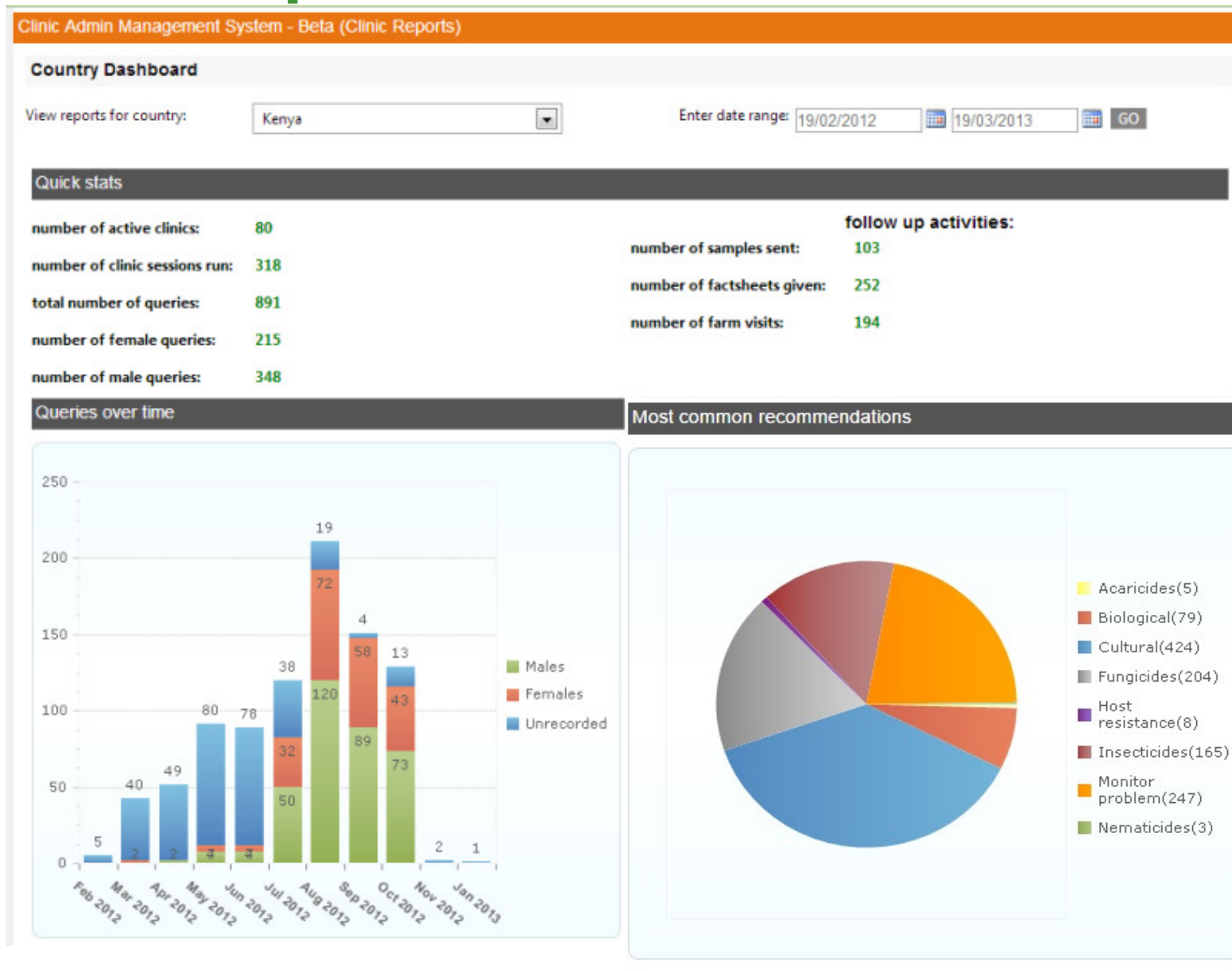
# Current Status in Asia



Plant doctors trained	> 1900
National master trainers (several countries)	>182
No. of clinics established	~989 (incl. e-plant clinics)
Clinic queries handled	>65,982
Plant health rallies held	05

- ✿ PW piloted in 11 countries with increasing demand to spread to others
- ✿ Clinics & associated outreach activities reaching many farmers **directly e.g. PCs & PHRs** and **indirectly through media (radios, newspapers, TVs) mobile telephones, etc.**
- ✿ **NB:** great potential for e-mobile (farmer to farmer & extension worker to farmer)

# Illustration: plant clinic data plantwise





# Knowledge Bank & PC data



Clinics data collection

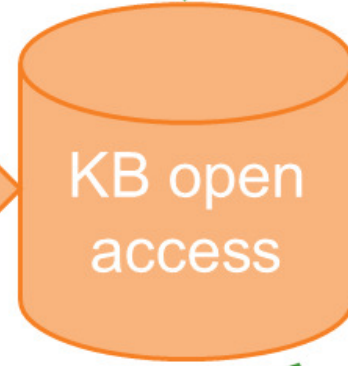
Content/data from CABI and partners



Plantwise data management tools

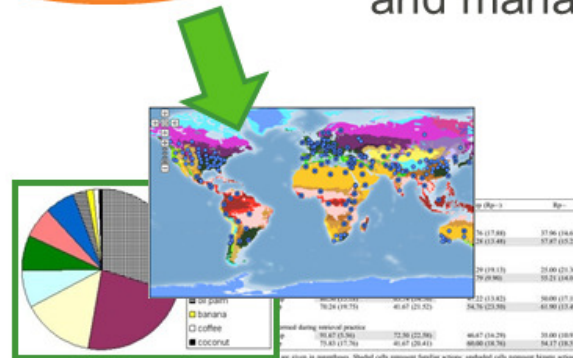


Reports, metrics, impact



Improved diagnostic and management tools

Access control



Improved data mapping, analysis and reporting tools



## Monitoring & Evaluation

- 🌱 Evidence-based assessment of performance & progress
  - 🌱 Processes & tools deployed at programme-level & in country operations
- 🌱 External Evaluation conducted by independent external collaborator(s)
  - 🌱 in selected countries e.g. Pakistan, Sri Lanka, China, Vietnam and Myanmar





## Critical M&E questions

- Does PW lead to plant health stakeholder linkages that
  - create stronger institutions for managing plant health?
- Does PW improve farmer livelihoods through
  - better management of plant health, exemplified by improved food security (and food safety)?





## Opportunities

- ✦ Maintenance of accurate pest records based on validated data
  - ✦ Can improve capacity to fulfil obligations under IPPC & improve phytosanitary compliance with market requirements
- ✦ A potential framework for vigilance on pests
  - ✦ to enable countries institute emergency response & deal with the associated trade access issues
- ✦ Products – e.g. PMDGs can serve as crop value chain-specific codes of good practice





## Lessons learnt

- 🌱 Need to align with country development plans e.g. in Pakistan, PW is included in Extension 2.0
- 🌱 Need to engage partners beyond national implementation teams/coordination units for broader buy-in broader demonstration of potential benefits
- 🌱 Varied commitment of governments in dedicating resources to PW operations
  - 🌱 Implications on sustainability!!!





## Going forward

- Promotion of KB & putting PC data to use by countries
- Strengthening of national ownership: use of national trainers, provision of resources for key operations
- Increased use of ICT: e-plant clinics, extension messaging & plant doctor support through mobile phones
- Collecting evidence: contribution to reduced crop loss, improved food security, better livelihoods & gender equity



# Thank you

*We wish to acknowledge the support of our donors, as well as our national and international partners who make Plantwise possible*



**LOSE LESS, FEED MORE**  
[www.plantwise.org](http://www.plantwise.org)