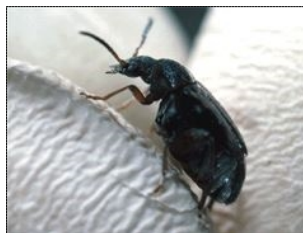


Cowpea Weevil

Callosobruchus maculatus



Adult cowpea weevil (Peter Credland)



Weevil larvae (NBAIR)

Prevention	Monitoring	Direct Control
<ul style="list-style-type: none"> • Before building the stores, plan to build them well isolated, ventilated and with the least possible windows and cracks. • Harvest grains promptly to avoid infestation transfer into storage. • Good store hygiene is essential for controlling this pest: <ul style="list-style-type: none"> • Before storing new grains, clean the storage area thoroughly and burn sweepings. • Clean storage bags and containers before filling with grains. • Fill in cracks/holes in storage facility to reduce insect pest access. • Ensure grains are cleaned and dried to a moisture level of 8-10% before storing. • Stored cowpea should not be kept on the bare floor. • Use airtight containers for storage. • Apply a thin layer of ash to cover the grain in store. 	<ul style="list-style-type: none"> • Monitor every 2 weeks from 2-3 weeks after storage: <ul style="list-style-type: none"> • Adults are small brown beetles. • Larvae are small, white, C-shaped worms. • Search grains for beetles, exit holes or cream coloured eggs. • Check storage bags/containers for powder, this is created by larvae feeding on the grains. • If inspections result in 3 or more infested grains or 1 adult beetle per 2 kg sample then use direct control measures. 	<ul style="list-style-type: none"> • Remove grains from storage and sun dry for at least 3 days, this will kill adults and larvae. • Mix 5 ml of groundnut oil to 1 kg of cowpea grains and store in an airtight container (short-time storage). • Add 1500 g of dried chilli to one bag of dried cowpea grains (long-time storage). • Mix seeds with non-toxic chemicals (e.g. vegetable oils). Mix 2 L to 1 kg of seed and sun dry before storage.

Note: Pesticides may be available to control this pest. Please check with the Ministry of Agriculture in your country to find out which pesticides are registered in your country and the local restrictions for their use.