



# distribution maps of plant pests and diseases

## what are the Distribution Maps of Plant Pests and Distribution Maps of Plant Diseases?

Created in association with EPPO (The European and Mediterranean Plant Protection Organization), Distribution Maps of Plant Pests and Distribution Maps of Plant Diseases are authoritative sources for accurate data on the worldwide distribution of plant pests and diseases of economic or quarantine importance. First published in 1942, the maps now cover over 2,750 carefully selected pest and disease species. The maps are available to buy as a package with online access and printed biannual map sets. Each set comprises mostly new maps, but may also include revisions where there have been changes to taxonomy or distribution.

### key features

- Online access to a fully searchable electronic backfile, in pdf format
- Each map is compiled and validated twice by a team of species specialists at CABI, the Natural History Museum, London (pest maps only), EPPO and independent consultants
- The Maps continue to be the most authoritative source of information available on the presence and extent of specific plant pests and diseases

## what do they cover?

- Arthropod pests
- Fungal, bacterial, viral and nematode diseases affecting agriculture, horticulture and forestry

## who uses *Distribution Maps of Plant Pests and Diseases?*

The Maps are a vital tool for those involved in phytosanitary decisions. In today's world, where a large amount of international trade is taking place on a daily basis, accurate mapping of plant pest and disease distribution has never been more important. The Maps have numerous applications such as the compilation of definitive lists of important species that are present in, or need to be excluded from, a particular country, or estimating the risks of pathways from sources where certain species are known to be present.

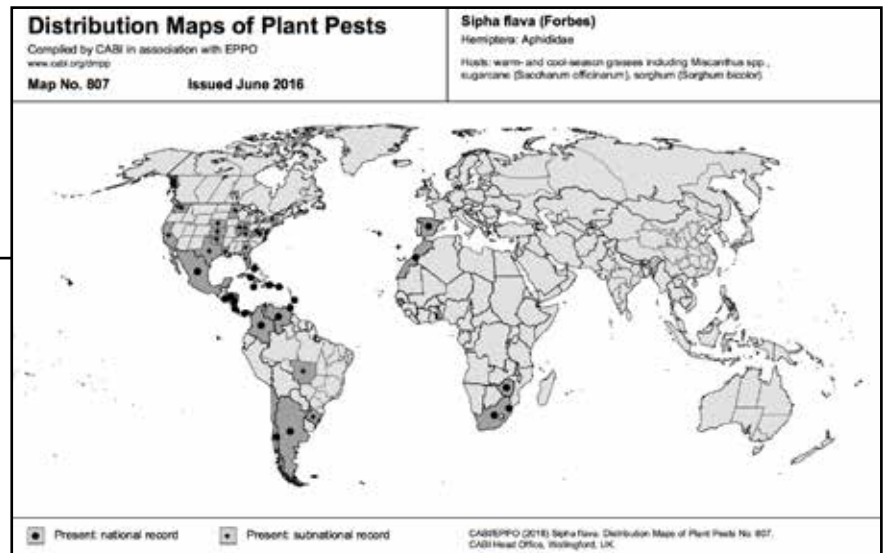
## what do they have to say about it?

"...as a user of these maps, I simply could not do without them."

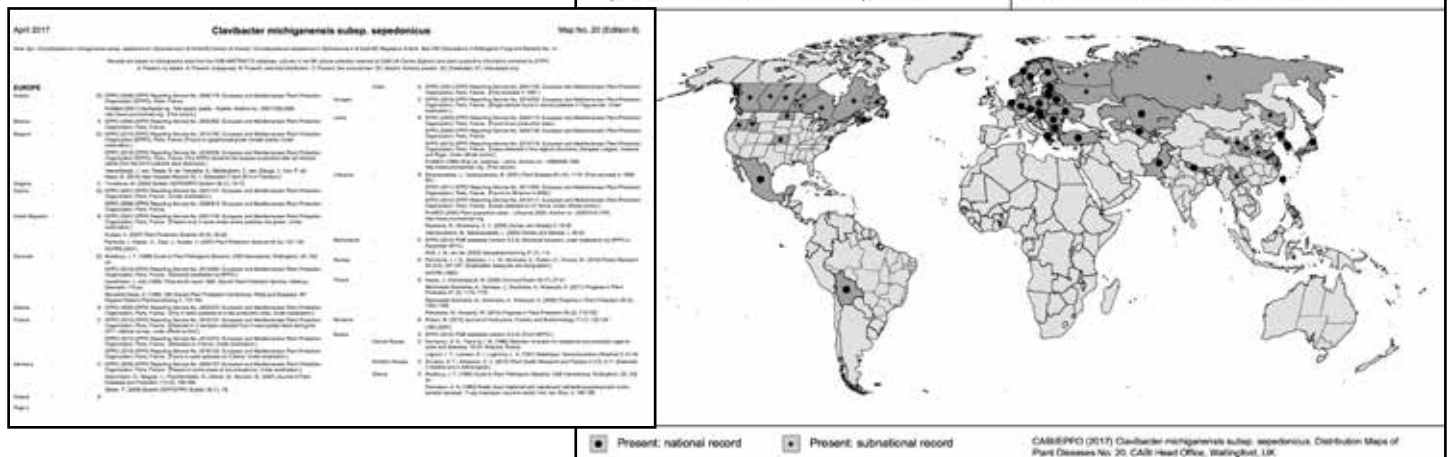
Anne-Sophie Roy, Information Officer, EPPO, Paris



*Siphia flava*



Each map contains a full list of references



[www.cabi.org/dmpp](http://www.cabi.org/dmpp)  
[www.cabi.org/dmpd](http://www.cabi.org/dmpd)

## contact

for subscription information, please contact our sales team::

**CABI** Head Office, Nosworthy Way, Wallingford, Oxfordshire OX10 8DE, UK. **T:** +44 (0)1491 829313, **E:** sales@cabi.org