



# Concluding Remarks and Vote of Thanks

**Trevor Nicholls, Chief Executive Officer**

**Member Countries Regional Consultation: Africa**

**26-28 February, 2019, Gaborone, Botswana**



## Highlights

- Hon Patrick Pule Ralotsia, Minister of Agricultural Development and Food Security opened the meeting
- State Minister of Agriculture for Ethiopia, Dr Sani Redi Ahmed participated in the meeting.
- Senior-level representation and active participation by delegates and partners in a collegiate atmosphere
- Interest in CABI membership expressed by Ethiopia, Cameroun, South Sudan
- Development and research partners' priorities and further opportunities of working together better understood



# The objectives have been met thanks to inputs from all of you

- Reviewed the progress made against CABI's Medium Term Strategy 2017-19, both globally and regionally
- Shared national strategies and priorities, and examples of partnership with CABI by MCs and PMCs
- Reviewed the continued relevance of the priorities identified in the MTS
- Regional and partner priorities linked with CABI's capabilities and strategies
- In-depth discussions on key strategic areas, programmes and initiatives





## Implications for the way we work ...

- **Do it right by putting women and girls at the centre of our plans from the outset**
- **Identify opportunities with high potential** for reach, benefit and empowerment across Agriculture Value Chains and Food Systems
- **Identify women groups:**  
Who they are? What they do? Their skills? Skill gaps? Organizational capacity? Access and control? Leadership and decision making roles?
- **Set clear baselines and target results** for women



## Break-out Discussions: Outcomes (1)

- Position statements overlap – an over-arching strategy is required that articulates how the different statements fit together
- Need to be more explicit that CABI will partner and support member countries
- Link to Regional partners such as FARA & AGRA plus RECS (COMESA, SADC, ECOWAS)

### ● ***Development Comms and Digital Development***

- Build on existing digital tools/platforms
- Capitalise on existing initiatives around compiling and accessing agricultural content for farmers
- Create processes and platforms to engage a broad range of stakeholders
- Incorporate indigenous knowledge
- Role of cooperatives and community groups
- Language needs to be tailored to target beneficiaries



## Outcomes (2)

### ***Agriculture & Climate Change***

- Help coordinate relevant work on climate change adaptation and mitigation across member countries
- Take advantage of being in different countries to identify and share best practice.
- Need to look at Climate Smart Crop Management , not just Pest Management
- Use data collected to help predict e.g. pest risks or crop resilience under changing rainfall patterns,
- Climate–change advisory supporting intensification and diversification

### ***Plantwise***

- Embedding into policy to mainstream Plantwise into national programmes to ensure sustainability
- Incorporate Plantwise into (sub-)regional activities, and work through regional bodies
- Stimulate private sector adoption by demonstrating greater profitability or food safety and quality.
- Involve input suppliers more closely
- Consider expanding scope to livestock and fisheries



## Outcome (3)

### ***Value Chains & Trade***

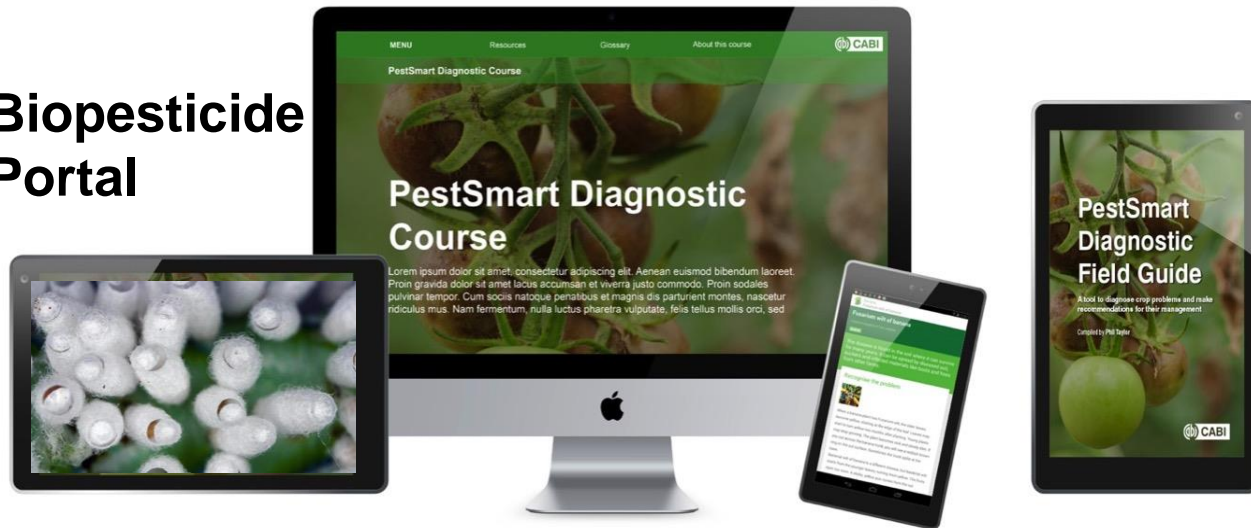
- More emphasis on nutrition, food safety and quality not just production.
- National and regional markets not just international exports
- Enabling policy environment and harmonisation across countries
- Intensification and diversification of crops grown
- Quality assurance of inputs

### ***Invasive Species***

- Need national implementation plans tailored to local situation
- Quantify the economic and social impacts
- Better mapping and distribution data on IS
- Regulatory challenges – weak enforcement of SPS and barriers to registration of biocontrol agents

# Exciting new product developments

## Biopesticide Portal



- ✓ PestSmart Diagnostics
- ✓ PestSmart Management
- ✓ Biopesticide Portal
- ✓ SciDev.Net
- ✓ Agriculture and Bioscience Open Access Journal



# Priority areas and issues

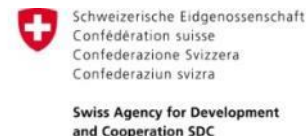
The previous 9 priority areas are still very relevant:

- Value chains and market access – high value and indigenous crops, “whole of chain” approach covering SPS, traceability and safety for crops and livestock
- Climate smart agriculture in practice, including water use and GMOs as applicable
- Integrated approach to roles for women and youth
- Knowledge management/advisory on livestock/zoonoses
- Digital development, language and literacy issues
- Invasives pathways – proactive, early warning and rapid response not reactive defence
- Natural products, biopesticides and biocontrol agents
- Social and environmental impact of projects and safeguards for women and youth
- Promoting and strengthening farmer-based organisations
- Evidence-based policy development to build an enabling environment

# CABI's strategic priorities to be driven by 2 key SDGs



# Key partnerships in the region



- National implementing agencies of participating countries
- Other private sector, NGOs, CBOs



# Raising Funds to deliver in your country (how you can help)

- CABI is not core funded – anything we do needs a financial backer.
- Our Member Countries are our biggest asset in fund-raising
- We need your help and support to make joint approaches to key funders
- Your own country agencies/ministries can also be a source of support and influence
- After the meeting we will contact each of you to develop an action plan where, together we can make a proposal – in country and at their Head Office (e.g. for Invasives or Plantwise)

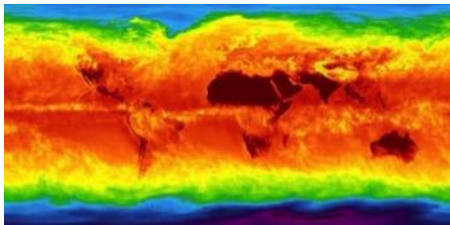


# What happens next?

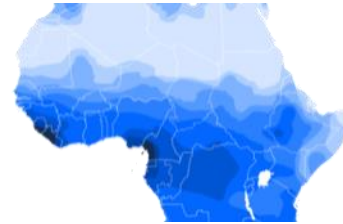
**The outcomes from this Regional Consultation will:**

- be consolidated with those from other regional consultations,
- matched with CABI's capabilities, resources and strategies, and prioritised within CABI's Medium Term Strategy 2020-22
- be fed into the CABI Review Conference 2019
- used to identify and implement agreed joint initiatives with member countries

# Pest Risk Information Service for Africa – extending Plantwise



Surface temperature



Rainfall



Met. and other  
Open Data



Scientific expertise and  
Plantwise partnerships



Modelling expertise



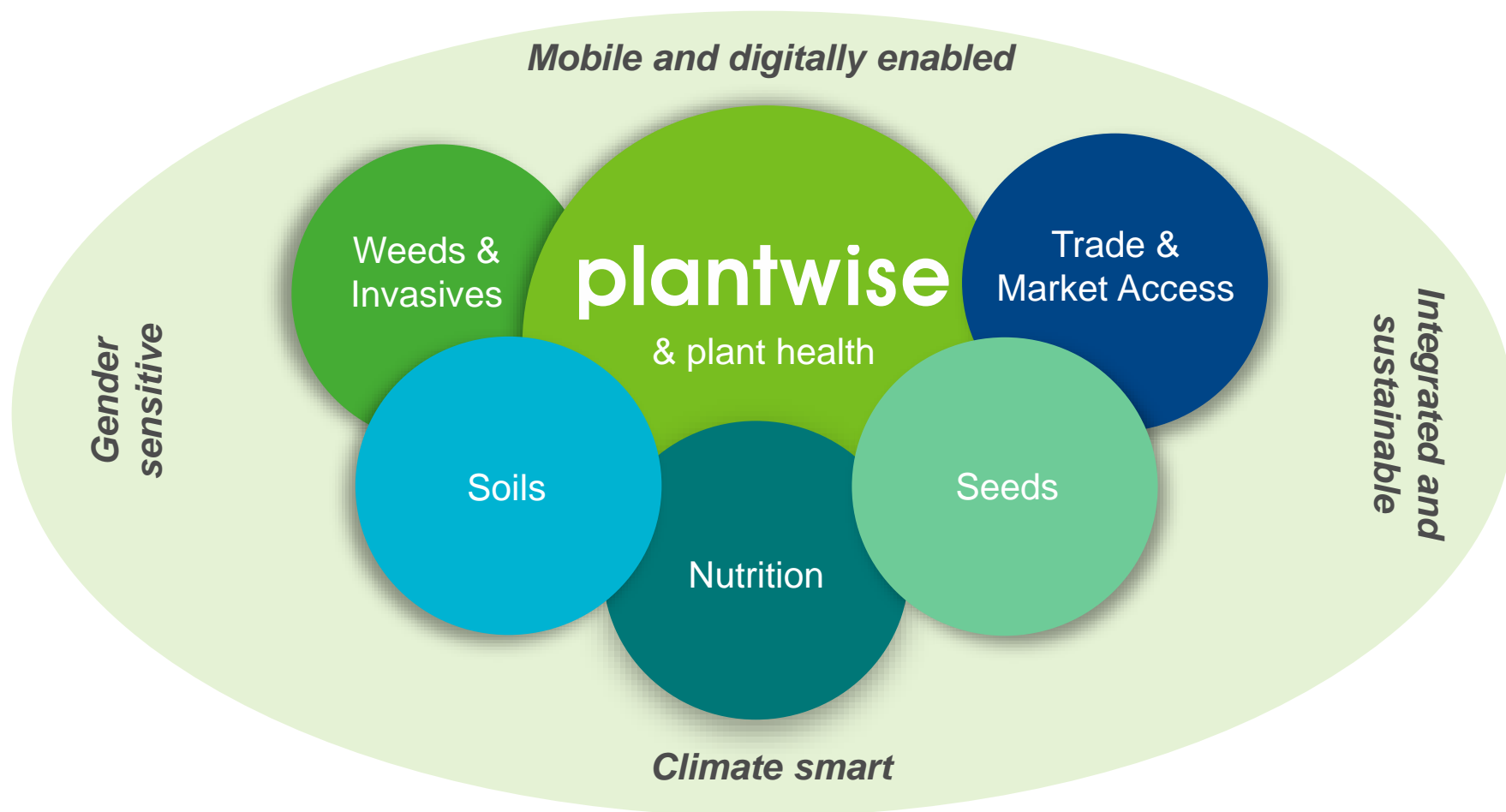
EO and data management  
expertise



PRISE models risks to crop health from insects  
and diseases based on environmental data

# CABI in the future

## healthy, sustainable agriculture



We are pleased to announce the

# 20th CABI Review Conference

**Date: Thursday 12 – Friday 13 September 2019**

**Location: Runnymede-on-Thames Hotel, Windsor Road, Egham, Surrey, UK**

Please save these dates in your calendar

Further information will be provided in due course but to find out more about this unique meeting go to: [www.cabi.org/membership](http://www.cabi.org/membership)

username: **cabi** | password: **member**



## Vote of thanks

- **Botswana (Ministry of Agricultural Development and Food Security )** for the wonderful hospitality and arrangements (particularly Dr Pharoah Mosupi and Dr Lekgari Lekgari)
- **Delegates** from CABI member countries, prospective member countries and partner organisations for your active participation and valuable comments throughout the Consultation as well as for your long-term support to CABI
- **CABI staff** across the whole organisation for their efforts in preparation and organisation - intellectual input and logistical arrangements. A true team effort
- **The hotel**, which has provided good facilities, services and a comfortable environment

