

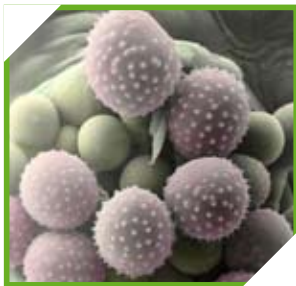
# Invasive Species Compendium



CABI Compendia are time-saving encyclopaedic databases that draw together scientific information on all aspects of a subject area. They are invaluable tools for researchers, students and practitioners. CABI has been developing and providing compendia for over 15 years and has a wealth of experience in collating and editing information, presenting it through innovative software to provide an authoritative resource.

In 2001 the development consortia for CABI's Compendium Programme identified a need for a Compendium on invasive species in recognition of the threat posed by invasive species to the global economy and environment.

This coincided with a similar recognition by the US National Invasive Species Management Plan.



CABI's long-standing expertise in invasive species makes it ideally placed to develop this resource, in partnership with other [expert organisations](#). This project has now started - guided by the Inception Workshop and following a phased plan. It is being conducted under CABI's management in close partnership with the US [Department of Agriculture](#).

This new Compendium follows the technology and principles of the four existing Compendia on Crop Protection, Animal Health and Production, Forestry, and Aquaculture. All CABI Compendia seek authoritative, science-based, peer-reviewed input from experts throughout the world, and compile these into a powerful web-based or CD-ROM system using the exceptional [Compendium Technology](#).



## What will the Invasive Species Compendium (ISC) cover?

The ISC will cover known invasive species of all taxa affecting natural and managed ecosystems, concentrating on those species that have the greatest impacts on livelihoods and the environment.

## What information will the ISC contain?

- Detailed datasheets on invasive species with referenced text sections, links to related content, images and distribution maps
- Outline datasheets on associated species (natural enemies, hosts, vectors, threatened species)
- Datasheets on ecosystems
- Datasheets on countries
- Key topics addressing a range of relevant issues
- Case studies to illustrate location-specific management practices and impacts
- Bibliographic database
- Glossary
- Taxonomic framework
- Statistics



## Development

Development is proceeding in two phases to match funding levels. In the first, a functionally simple web-based system is being developed during 2007 which will contain **1000+ detailed invasive species datasheets**. Each datasheet will be structured to enable powerful and flexible analysis of the data for the tools planned in the second phase of development. A library of full-text documents (key topics and case studies) will also be included.

The second phase will extend the species coverage, enhance the data sets and increase the functionality for searching the databases. It will provide decision support tools for prioritising species of concern, risk analysis, prediction, identification and economic analysis.

## The ISC will be an essential tool for:

Policy makers / natural resource planners / producers: farmers, foresters, aquaculture, fisheries, pets, nurseries / agricultural, forest, rangeland, water, park and urban land managers / transport managers / conservation and community groups / pest risk assessors / border agencies / traders / importers and exporters / wildlife managers and health practitioners / endangered species managers / extension workers / trainers and field schools / researchers / universities / technical development workers / development assistance agencies / land- and water-related industries / market researchers / media

## Current members of the Development Consortium are:

Canadian Food Inspection Agency / Canadian Forest Service / Monsanto / USDA-APHIS / USDA-ARS / USDA-FAS / USDA-FS / USDA Invasive Species Coordination Program / USDOC-NOAA

We invite you to join the **Development Consortium** to be part of this exciting project! Benefits include a seat at the table to determine strategic direction; CABI's commitment to deliver; visibility as one of the developers; free or highly discounted access to the end-product.



---

## contact

**Martin Parr**, Project Manager **T:** +44 (0)1491 829442. **E:** m.parr@cabi.org