

# CABI



who we are, what we do...

KNOWLEDGE FOR LIFE

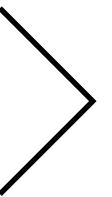
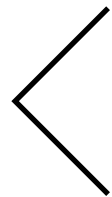
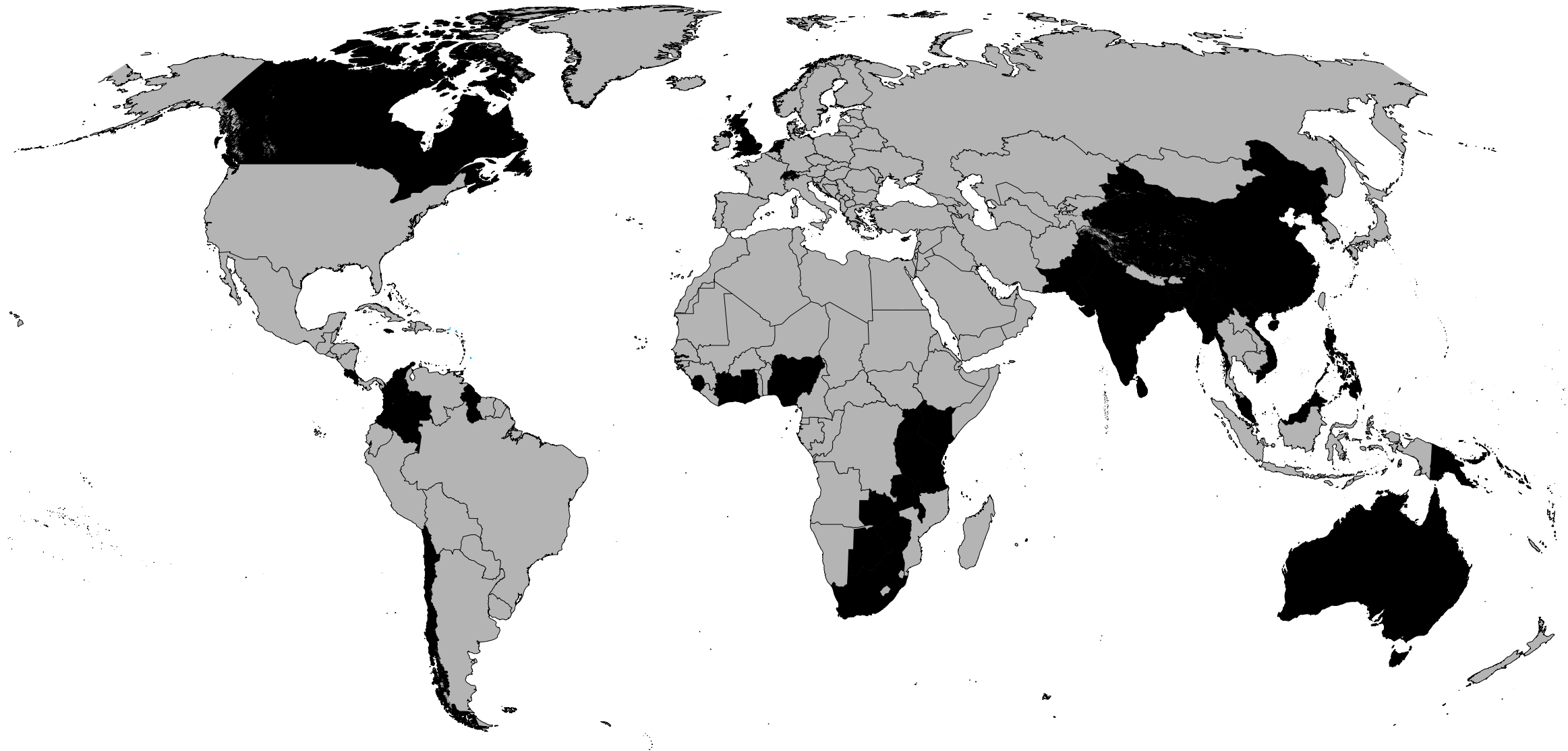




**CABI** is an inter-governmental, non-profit organization that was set up by a United Nations treaty level agreement between its member countries.



Our mission and direction is influenced by our **48 member countries** who guide the activities we undertake.





CABI is a development led organisation supported by  
a strong base of scientific research and a world class  
publishing business.



Approximately

**400**

CABI staff

working from

**21**

locations around the globe

in more than

**70**

countries







1915

1956

1987

2010

2014

After over 100 years CABI has reached the most exciting time in its history. Today, if we all pull together we can help resolve tomorrow's global challenges.

This document explains how we will achieve this, so you can play your part in spreading the message. Following consultation with member countries and partners CABI has developed a clear strategic path.

< The following diagram demonstrates how the many diverse activities CABI is involved in supports our **core mission**. >

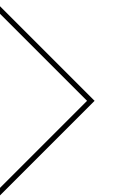
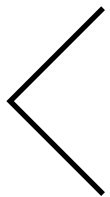


## our mission

CABI improves people's lives worldwide by providing information and applying scientific expertise to solve problems in agriculture and the environment, enabling us to...



**LOSE LESS  
FEED MORE**

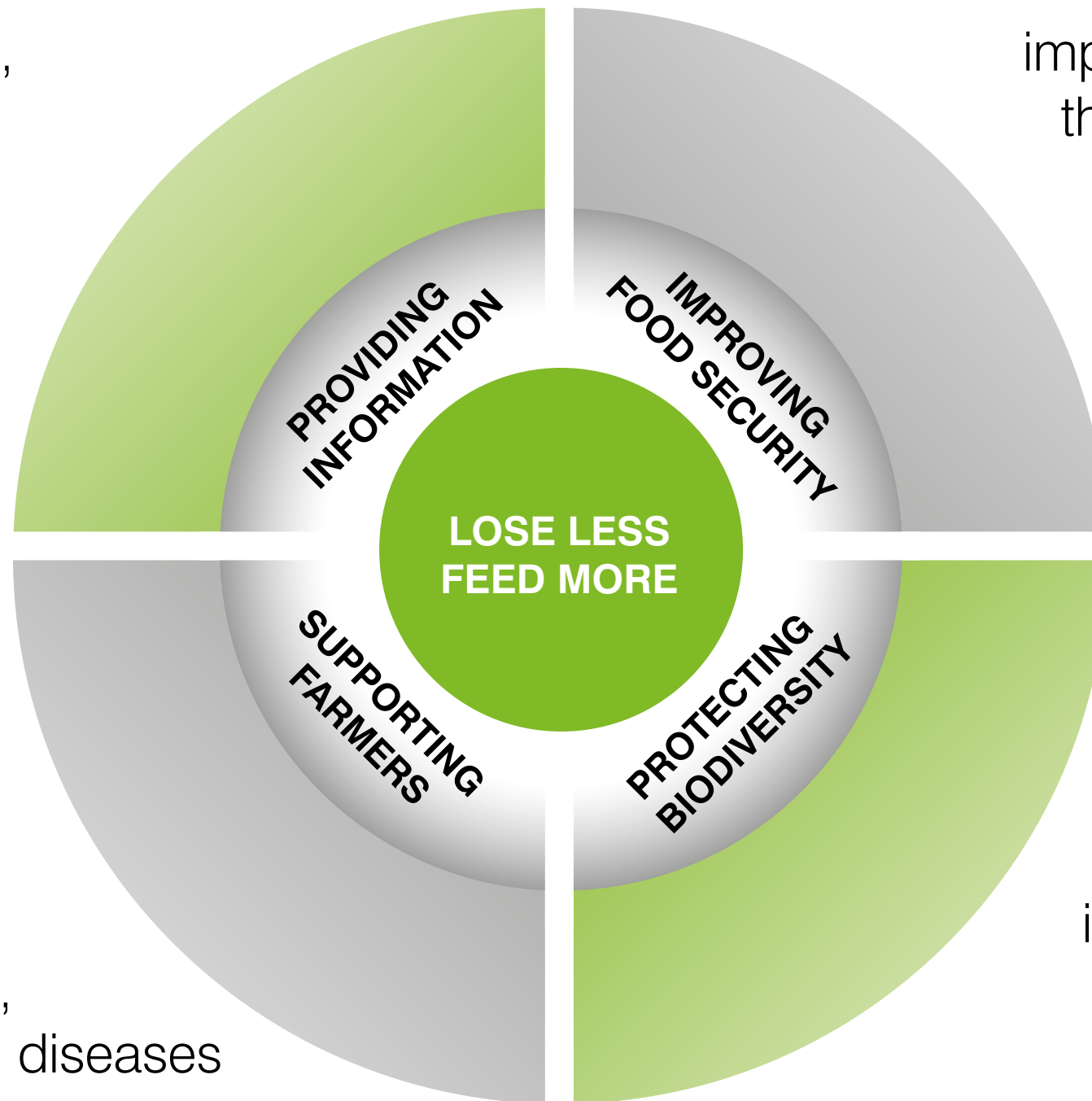




# we will achieve our mission by

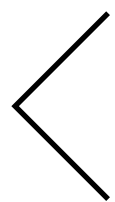
creating, managing,  
curating and  
disseminating  
information

improving food security  
through climate smart  
agriculture and  
good agricultural  
practices

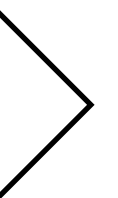


supporting  
farmers by  
increasing their  
capacity to grow  
better quality crops,  
and fight pests and diseases

protecting  
livelihoods and  
biodiversity from  
invasive species and  
other threats



that means focusing on the following...

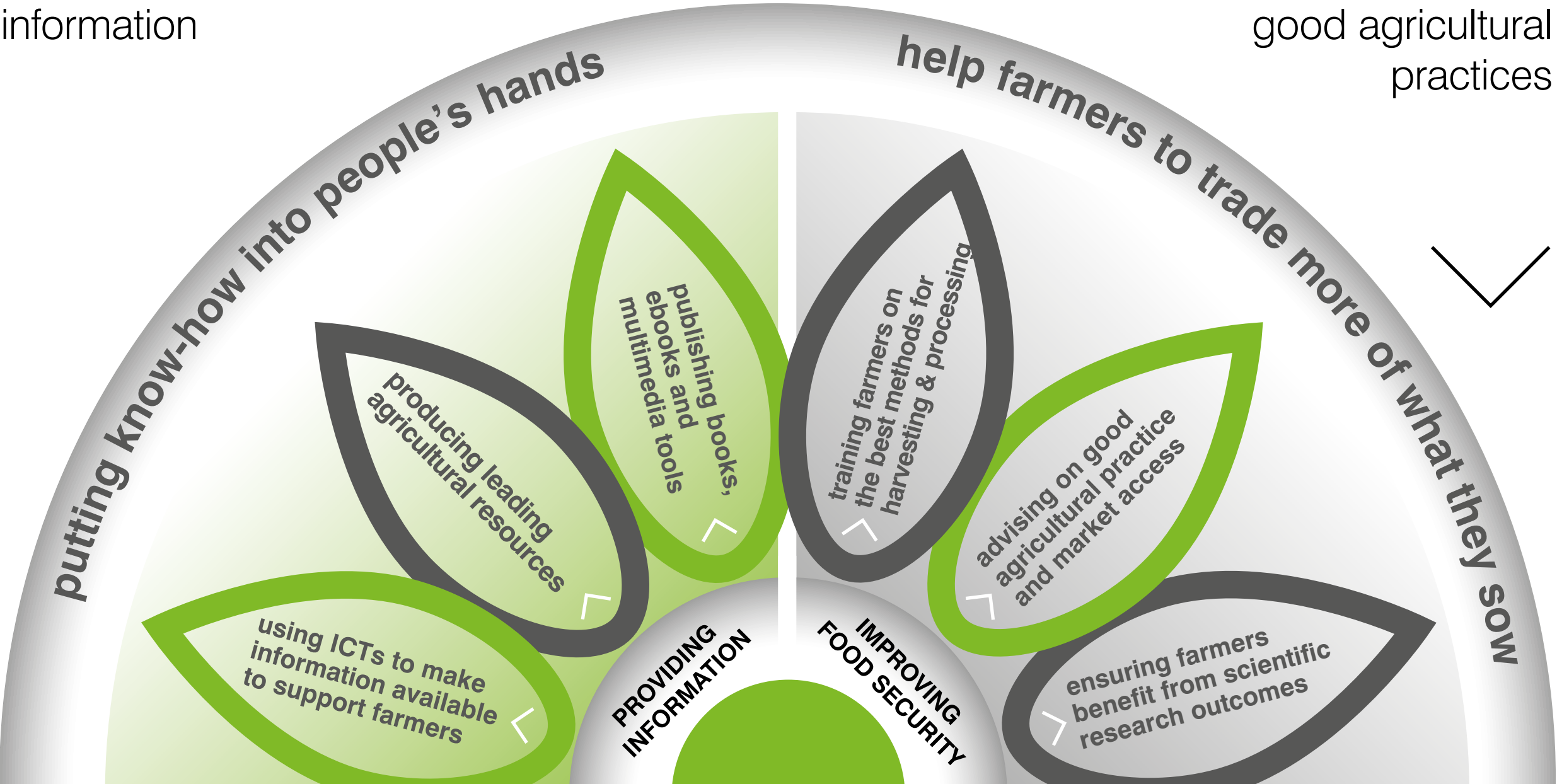




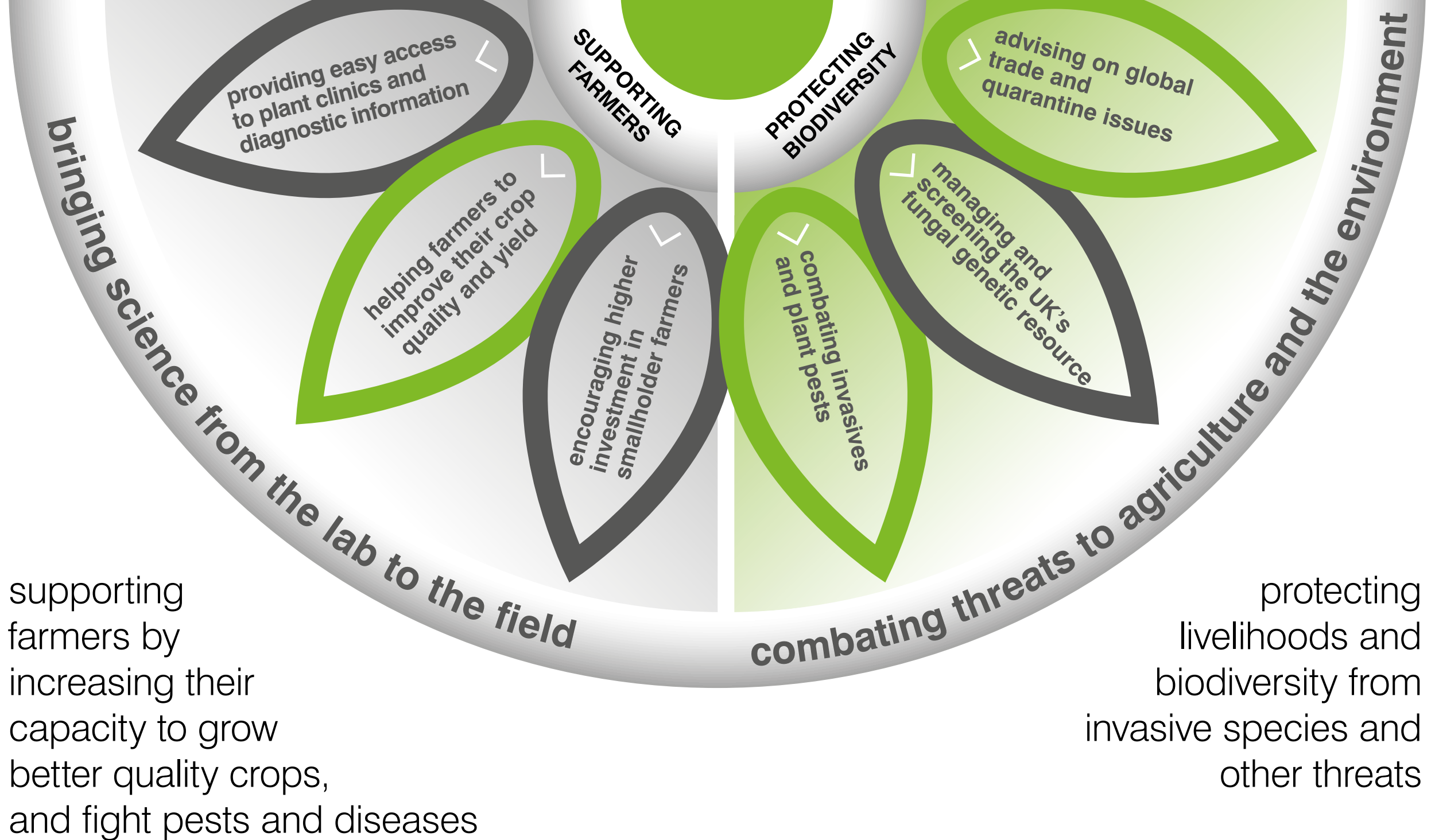
# areas of expertise

creating, managing,  
curating and  
disseminating  
information

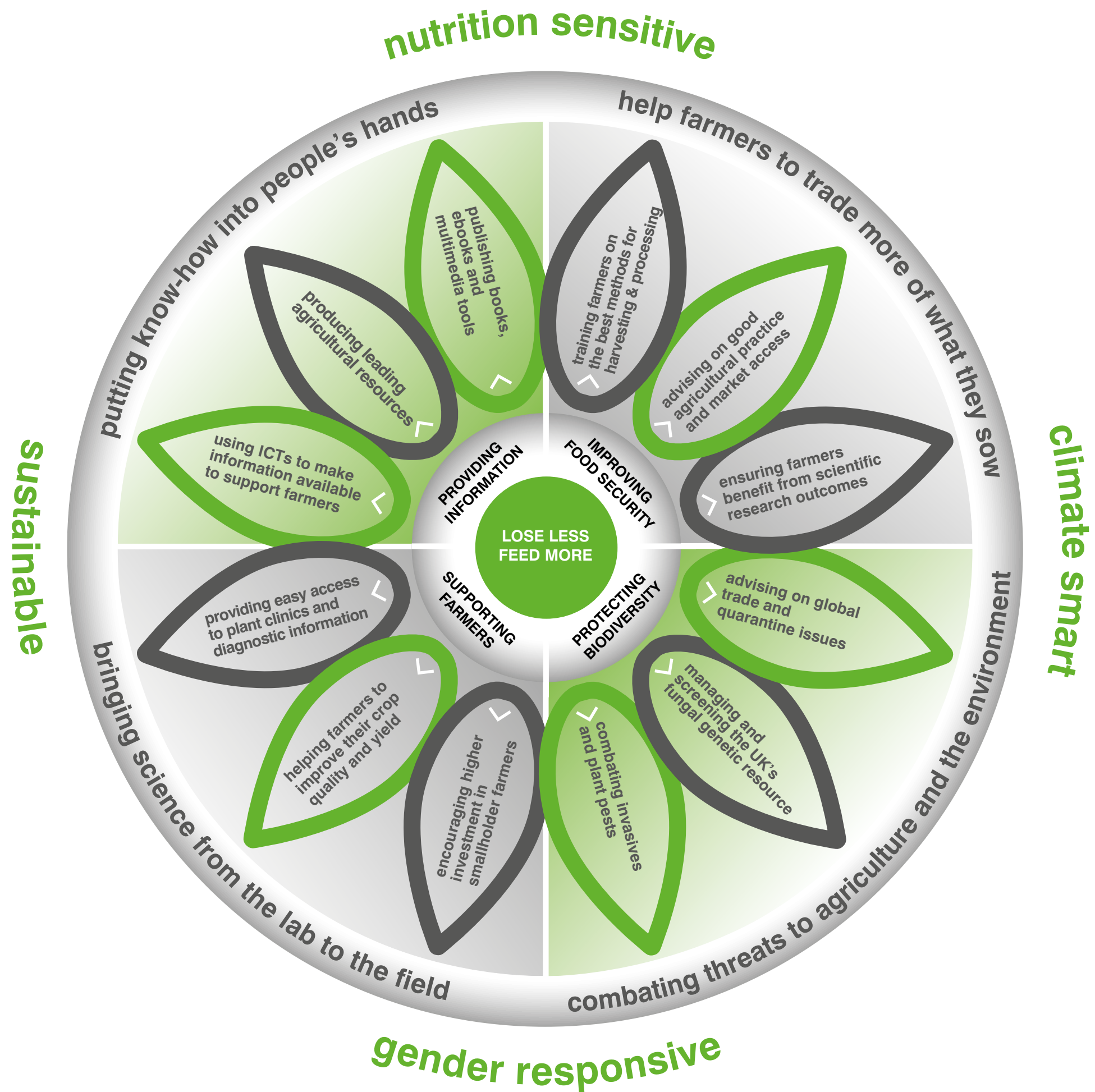
improving food security  
through climate smart  
agriculture and  
good agricultural  
practices







< we will carry out our work in a responsible and responsive manner >







< our values



## **We are committed to sharing knowledge**

Knowledge is the application of information, augmented by experience. Knowledge enables people to support themselves and improve their lives when it is communicated effectively.

## **We view partnerships as key to success**

Through local, national and international partnerships we can disseminate knowledge with greater reach, impact and scale.

## **We care about people**

We use our skills to help people around the world – from smallholder farmers in developing countries to researchers and academics. We focus on the uptake and application of knowledge.

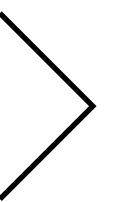
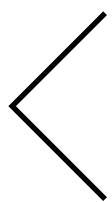
## **We believe in long term solutions**

We work with people and partners, in-country, to develop enduring solutions and build skills. We build lasting, value-creating relationships with our customers and stakeholders.

## **We are objective and impartial**

We will not allow what we say to be influenced by political or commercial considerations. We work with partners including governments to help people.

The information we provide is high quality, evidence-based, relevant and reliable.







◀ our vision for the future ▶



## By 2020 ...

We will be the number one 'go to place' for insightful, independent, practical and science-based knowledge about agriculture.

**We will be making a positive difference to the lives of over 100 million people** who will benefit from the knowledge gained from us and apply their own expertise to feed themselves, their families and their communities.

**We will be acknowledged as having made a key contribution to reducing crop losses** by at least half in the countries where we work.

**We will be providing supporting data and scientifically validated information** for most of the world's major strategic initiatives in agricultural and environmental development.

**We will be recognised as a thought leader in international agricultural research** for development and environmental sustainability, therefore sought by governments, companies and international organisations for our inputs and expertise.

**We will be considered as one of the world's top development organisations for agriculture.**





< our visual identity >

# The most recognisable part of our brand is our visual identity.

A strong visual identity is made up of much more than just a logo. Although important, the logo is just the tip of the iceberg. Colours, fonts, shapes, graphics, photography and illustration all have a role to play. Put together effectively they will project CABI's own distinctive personality to boost brand recognition.

Ideally, you should be able to put your thumb over the logo on any piece of communication and still tell it's from CABI.

For more information on how to use the CABI brand in visual materials, go to our **Brand Guidelines**.

For any further questions please contact the marketing team

T: +44 (0)1491 832111, E: [info@cabi.org](mailto:info@cabi.org)







**CABI**  
using knowledge to improve  
people's lives worldwide

www.cabi.org  
KNOWLEDGE FOR LIFE

3 CABI BIOTECHNOLOGY SERIES

**Transgenic Insects**  
Techniques and Applications

EDITED BY MARK G. BENNETT




www.cabi.org

5 CABI INVASIVE SERIES

**Bioenergy and  
Biological Invasions**  
Ecological, Agronomic and Policy Perspectives on Mitigating Risk

EDITED BY LAUREN D. QUINN,  
DAVID P. MATLAGA AND JACOB N. BARNEY



www.cabi.org

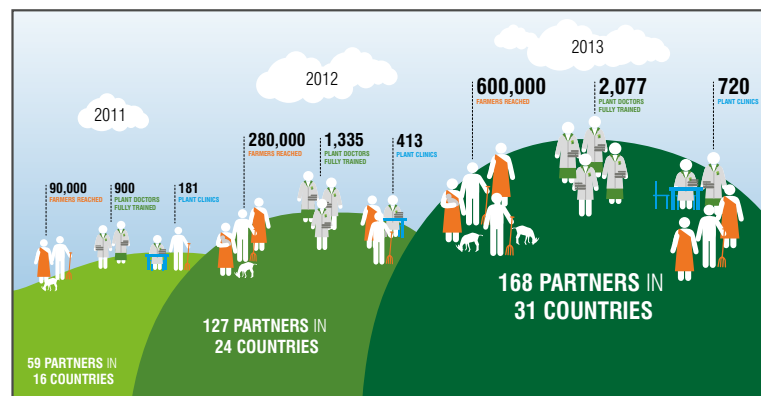
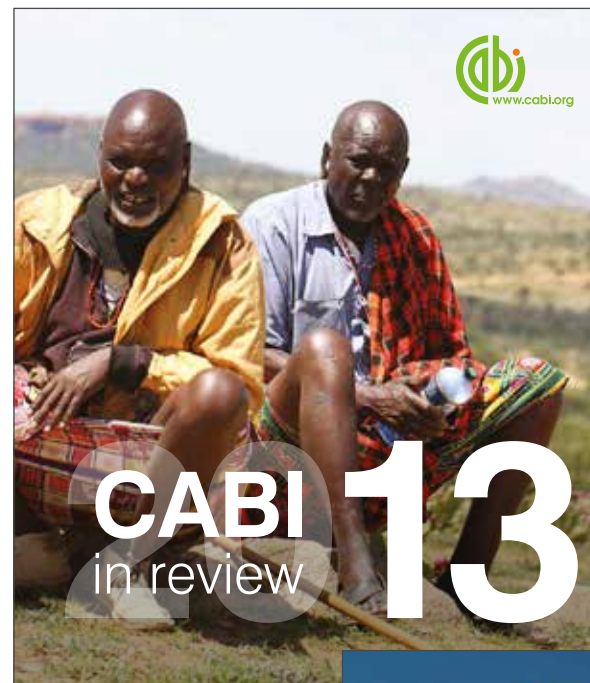
3 CABI PLANT PROTECTION SERIES

**Integrated Pest  
Management in the Tropics**

EDITED BY DHARAM P. ABROL

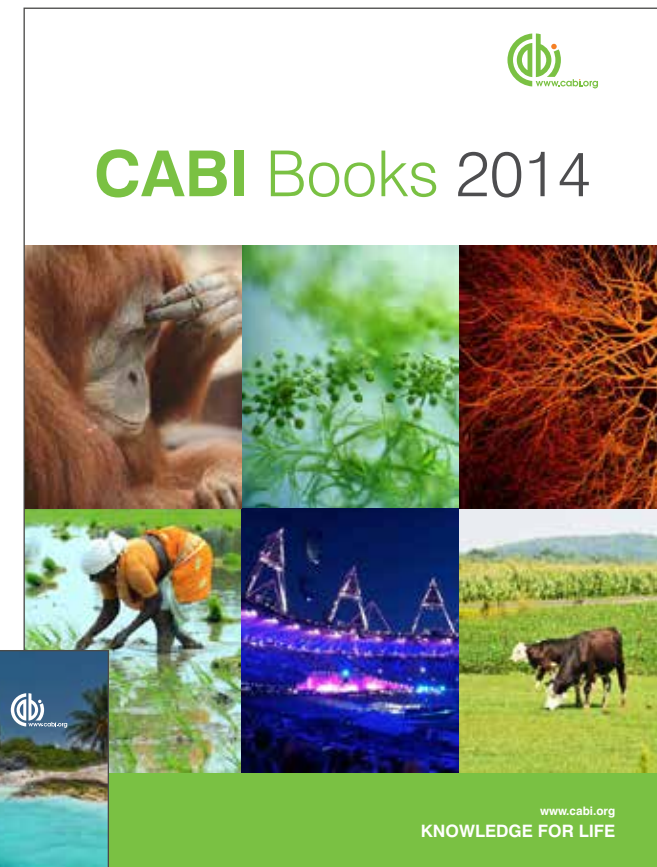


www.cabi.org

**CABI 13**  
in review

www.cabi.org



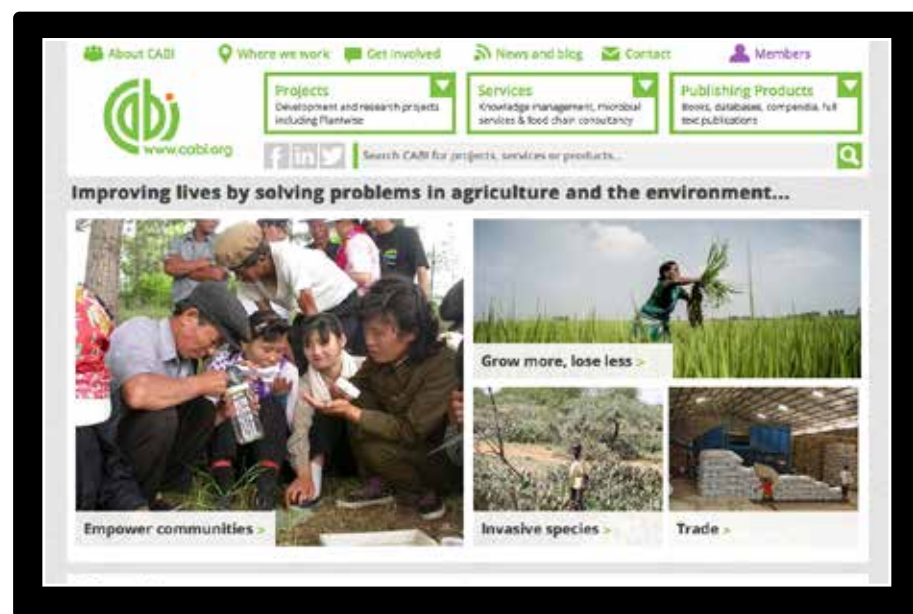
**CABI Books 2014**

www.cabi.org  
KNOWLEDGE FOR LIFE



**leisure & tourism**  
books from CABI

www.cabi.org  
KNOWLEDGE FOR LIFE



www.cabi.org

Improving lives by solving problems in agriculture and the environment...

Empower communities > Grow more, lose less > Invasive species > Trade >



**Presentation heading here**  
2nd line if needed

**Presentation Subtitle here**

Data collected by (names of contributors and production team)  
Analysis and Compilation by (names of contributors)  
Presenters name, date, event

www.cabi.org  
KNOWLEDGE FOR LIFE







## CABI's centre in São Paulo, Brazil

Opened at the end of 2010, it operates across the whole of South America, providing high quality scientific knowledge, information and expertise to the South American nations. This is a region with a diverse climate and highly sensitive environments, where a wide range of crops and livestock are farmed and traded, particularly coffee and cacao. The region presents significant opportunities for improving the efficiency and sustainability of agriculture.

The centre supports CABI's global Plantwise programme, and works with partner institutions in Bolivia and Peru to reduce crop losses. It also implements projects related to integrated pest management (IPM), and biological control of invasive weeds and forest pests. Smallholder farmers are encouraged to use IPM approaches to control pests and the centre works to identify practical and reliable methods of pest control, which also protect the environment and the health of the local community.

Food security is important for countries in the region and the centre encourages them to embrace sustainable production methods. The centre also works to improve information sharing and communication between farmers and other stakeholders.

The centre collaborates with a number of organizations across the region, from local and national governments to universities and commercial enterprises. Examples of mutually beneficial

relationships include collaboration with EMBRAPA, an important agricultural institution in Brazil, and the São Paulo universities, UNESP and ESALQ.

Work carried out by the centre is having a positive impact on the region's economy and environment. Colombia and Chile are both CABI member countries, and CABI hopes to be able to welcome other nations in the region as members in the future.

Looking ahead, the centre will continue to strengthen CABI's presence in the region, opening new projects and creating opportunities for further co-operation with the nations of South America.

### Contact us

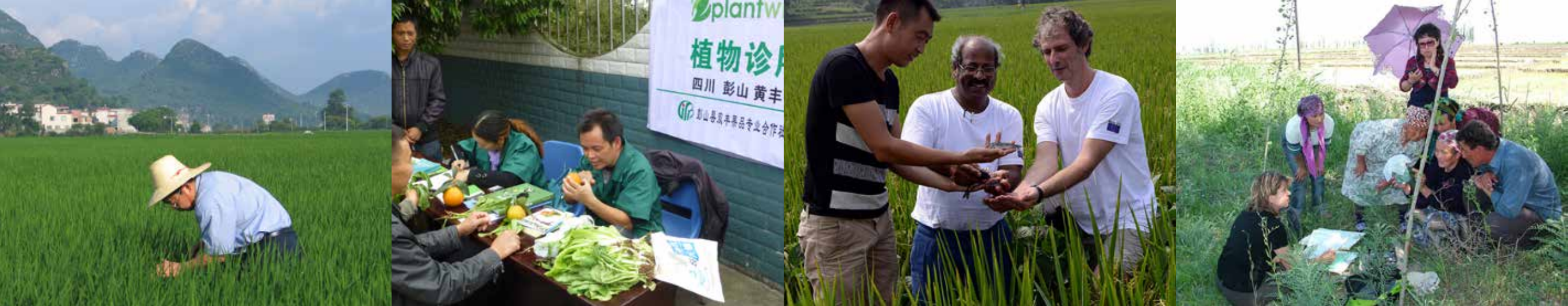
CABI, UNESP-Fazenda Experimental  
Lageado, FEPAF (Escritorio da CABI)  
Rua Dr. Jose Barbosa de Barros 1780  
Fazenda Experimental Lageado  
CEP: 18.610-307  
Botucatu, São Paulo, Brazil

**T:** +5514-38826300

**E:** [y.colmenarez@cabi.org](mailto:y.colmenarez@cabi.org)

[Back to map](#)





## CABI's centre in Beijing, China

Situated in CABI's most populous member country, and one of the fastest growing economies in the world, CABI has had a presence in China since 1980. Its centre in Beijing works across the whole of East Asia, a region that despite including the world's second and third largest economies, also faces huge challenges of food security and environmental sustainability. Work carried out by the centre is wide-ranging and addresses a variety of issues related to sustainable agriculture and environmental protection.

One of the key challenges for the region is food security. Staff at the centre work to address this in a number of ways, including through improving access-to-market for smallholder farmers and helping them tackle plant health problems. Sustainable crop management is encouraged, and has delivered increased yields and improved food security.

The use of safe biological control methods to manage agricultural pests is promoted. The resulting reduction in use of pesticides by local farmers has helped protect local biodiversity and reduce the impact of agriculture on the local environment, as well as opening up increased trading opportunities.

With a lack of funds preventing many of the region's libraries from stocking the latest scientific literature, the centre works to ensure access to cutting-edge scientific knowledge. Staff set

up sponsorship and licensing arrangements, and bring together research and educational centres so that they can buy information resources in bulk at competitive rates. The centre also facilitates the flow of research information out of the region, and encourages technology transfer.

None of this can be achieved in isolation, and the centre works closely with a number of governmental agencies, research and extension institutions, including the Chinese Ministry of Agriculture, Chinese Academy of Agricultural Sciences and many more.

Looking ahead, food security will continue to be a priority, and the centre also sees great scope for continued work around information provision and technology transfer for south-south cooperation.

### Contact us

CABI, Beijing Representative Office, Internal Post Box 56  
Chinese Academy of Agricultural Sciences  
12 Zhonggunancun Nandaajie, Beijing 100081, China

**T:** +86 (0)1082105692

**E:** [china@cabi.org](mailto:china@cabi.org)

[Back to map](#)





## CABI's centre in Accra, Ghana

CABI has had a presence in Africa for over 100 years. Our centre in Ghana was officially opened on 4 July 2012 and serves West Africa – a region made up of 15 states, and with a population of about 300 million. This is a region where agriculture is of huge importance. The countries of West Africa are major producers of cocoa, oil palm, cotton and groundnuts, as well as livestock and forest products, but there are significant challenges to effective trade in agricultural commodities in this region.

The centre is engaged in science-based work to support agricultural production and trade, and correspondingly increase economic opportunities in the region and beyond.

Specific work includes the training and development of extension workers, in order to enable agricultural information to be disseminated to farmers in the area. Trained extension workers also offer free pest identification and control services to farmers through plant clinics.

Better access to knowledge is enabled through the development of communication materials covering a range of agricultural topics, such as crop and soil management and the management of common pests and diseases.

Collaboration is essential for the centre to achieve its work efficiently and successfully. With this in mind the centre continues to develop strong and productive relationships with nations (including CABI member countries) as well as national bodies responsible for agricultural research and development (including NGOs and Foundations). It liaises with other CABI staff both in Africa and across the globe, as well as partner organizations and agencies.

In the years ahead the centre aims to increase the use of scientific knowledge and skills in agricultural production, food processing and the promotion of sustainable, ethical and profitable trade by the West African countries.

### Contact us

CABI, CSIR Campus

No.6 Agostino Neto Road, Airport Residential Area

PO Box CT 8630, Cantonments, Accra, Ghana

**T:** +233 (0)302 797 202

**E:** westafrica@cabi.org





## CABI's Head Office in Wallingford, UK

Over 140 staff are based at CABI's Head Office in Wallingford, working in Publishing, Sales and Customer Service, IT, Marketing, Project Development and Knowledge Management.

### Knowledge Management

We are experts in the communication and dissemination of scientific knowledge. Our Knowledge for Management team is focused on bringing together the latest scientific research and getting it to those who need it.

### Project Development

Our Project Development team works with our scientists to develop project proposals and respond to tenders from donors. Three members of the team are based at our Head Office, two are based at our UK Centre in Egham and the sixth team member is based in our South Asia centre in Pakistan.

### Marketing

Our Marketing team is dedicated to promoting the wealth of work undertaken by CABI. Through our website, press releases, newsletters, exhibitions and marketing campaigns, we are able to communicate effectively CABI's latest news, events and achievements to our audiences.

### Publishing Sales

Our services and products, resources and expertise are invaluable to modern industry, global agriculture and environmental programmes. Our Sales team works closely with our customers to ensure they have continued access to the most relevant and up-to-date scientific information available.

Contact publishing sales: [sales@cabi.org](mailto:sales@cabi.org)

### IT

Our IT specialists create innovative technology-based products, designed to enable scientific knowledge to be available in accessible and usable formats.

### Contact us

CABI, Nosworthy Way  
Wallingford, Oxfordshire  
OX10 8DE, UK

**T:** +44 (0)1491 832111

**F:** +44 (0)1491 833508





## CABI's centre in Egham, UK

CABI's science centre at Egham was established in 1992, but CABI has had a scientific base in the UK since its very beginning. Over the years its work has supported hundreds of CABI projects and reached thousands of farmers in countries across the world. Much of the team's current work is for national government departments, in particular Defra and DfID.

The centre operates across the globe providing support on a range of topics, including invasive species, pests and diseases, knowledge management and commodities.

Its scope is extensive – it carries out around 70 projects each year, which range from working to identify nematodes that are new to science in Chile, to seeking natural enemies for Europe and North America's most invasive weeds.

With over 75 staff, a growing team of scientists carries out applied scientific research to find safe and sustainable solutions to problems in agriculture and the environment. An array of labs, glasshouses, poly tunnels and two level 2 quarantine suites with eight climate controlled chambers, mean the centre is perfectly equipped to work with almost any organism in the world, in ideal conditions.

The centre is also home to CABI's Microbial services team. The team's specialist staff provide microbial expertise, with particular emphasis on agricultural and biotechnological applications. Services provided include microbial identification, culture sales and deposit, environmental and industrial investigation, contract research and provision of publications and training. The team's work is supported by the Genetic Resource collection on site, which holds cultures of 28,000 living micro-organisms.

The centre collaborates extensively with both public and private sector organisations, NGOs, universities, governments and many more, in order to work in the most effective and sustainable way.

### Contact us

CABI, Bakeham Lane  
Egham, Surrey, TW20 9TY, UK

**T:** +44 (0)1784 470111

**E:** [cabieurope-uk@cabi.org](mailto:cabieurope-uk@cabi.org)

For Microbial Services

**E:** [microbialservices@cabi.org](mailto:microbialservices@cabi.org)

[Back to map](#)





## CABI's centre in New Delhi, India

CABI first established a centre in India in 1948, and has been working in the region ever since. South Asia is agriculture-oriented – more than 50% of the population is engaged in agriculture as its primary occupation. The region produces some key food security crops, and is responsible for feeding a significant proportion of the world.

CABI's centre in India works to improve the lives of local people and communities in the region, through a variety of methods. It helps smallholder farmers to improve the quality and quantity of their crops, enabling them to achieve better prices, and works to increase opportunities for trade. It also provides training and access to knowledge for farmers that will help them to improve crop quality whilst safeguarding the environment.

Specific programmes include the regional implementation of CABI's global Plantwise initiative, which aims to help farmers lose fewer crops to pests and diseases, and thus increase their yields. The use of safe biological controls is encouraged, and trained extension workers hold free advisory plant clinics for farmers in the local area.

The centre also runs an innovative information service called Direct 2 Farm (D2F). D2F provides agro-advisory services to farmers in the region via the mobile phone network (a key method of communication in developing countries). Through D2F farmers can access high quality bite-sized pieces of information, as SMS

or voice messages, on demand via their mobile. It's a practical, effective way of delivering the knowledge farmers need to solve their everyday agricultural problems.

The centre collaborates with a number of public, private and governmental bodies across the region, to enable the effective and efficient implementation of programmes, and to enable impact to be studied. Work so far has yielded tangible economic and social benefits for the local communities, as well as the environment.

Future aims include the establishment of a sustainable CABI presence in each country of the region, and attracting sustainable investment funding for the centre's various agriculture and environment initiatives.

### Contact us

CABI, 2nd Floor, CG Block,  
NASC Complex, DP Shastri Marg  
Opp. Todapur Village, PUSA, New Delhi – 110012, India

**T:** +91 (0)11 2584 1906

**F:** +91 (0)11 2584 2907

**E:** [india@cabi.org](mailto:india@cabi.org)

[Back to map](#)





## CABI's centre in Nairobi, Kenya

CABI has worked in Africa for many years, but in 1995 it formally established a regional centre in Nairobi. In Africa over 80% of people living in rural areas rely on the crops they grow for food and for income. They face many challenges in growing sufficient good quality produce, such as changing climatic conditions, threats from pests and diseases, lack of access to markets, and limited access to current agricultural information. Agriculture is essential for sub-Saharan Africa's economic growth and yet average crop yields in Africa are among the lowest in the world.

CABI's centre in Kenya strives to improve livelihoods, working with the communities that it serves to address the problems they face using sustainable approaches.

A key element of the centre's work is helping smallholder commodity growers to produce for and compete in local and global markets. The centre also encourages rural innovation and helps local users access global information and knowledge. Plant health is safeguarded through a range of initiatives, which include the management of invasive species, work to reduce the transmission of harmful pests and diseases through traded goods, the development of safe and effective biological controls, and Plantwise, CABI's global project to reduce crop losses. CABI's Good Seed Initiative, which seeks to improve the quality of seed that farmers plant, and thus improve crop yields, is also championed.

The centre works in partnership with many organizations in both the public and private sector, to enable work to be achieved in the most effective and cost efficient way. It collaborates on a national and regional level, working with agricultural extension departments, research centres, producer organisations, NGOs and regulatory agencies. International partners include international research organisations and private sector institutions such as the Rabobank and Illycafé. The centre's work has significant social and economic impact. Improved productivity, improved quality, and conformity to market standards enable the region's farmers to achieve a better income from their produce. The centre also positively impacts the environment, through its promotion of sustainable agriculture, its work to reduce pesticide use and its management of invasive species. Looking to the future the centre will continue its work in support of CABI's overarching strategy, and plans to improve its monitoring and evaluation systems, in order to more clearly document its learning and impact.

### Contact us

CABI, 9 Limuru Road, Muthaiga, Nairobi, Kenya

**T:** +254 (0)20 2271000 / 20

**E:** [africa@cabi.org](mailto:africa@cabi.org)

[Back to map](#)





## CABI's centre in Kuala Lumpur, Malaysia

CABI's regional centre in Malaysia was established in 1988, and works across the whole of South East Asia. This is a region that is still largely agriculture-dependent, very biodiversity-rich and environmentally-fragile.

Countries in the region vary widely, from newly industrialized economies to those hampered by inadequate infrastructure, limited financial resources, political turmoil and environmental disasters. With its diverse mix of people, cultures and traditions, working in the region poses both significant challenges and exciting opportunities.

This centre's work is wide-ranging. It includes sustainable pest and disease management, invasive species prevention and management, and work around plant health, biosecurity and sanitary and phytosanitary (SPS) issues. Also important is work looking at sustainable production techniques and commodity chains, as well as information management and access to knowledge.

The centre empowers local people to tackle various agriculture and environment problems in ways that will reduce impact on the environment, bring about better yields and increase trade in agricultural commodities between countries.

The CABI centre in Malaysia collaborates with a number of organizations in this dynamic region. Partners include industry bodies such as the Malaysian Palm Oil Board, research organizations such as the International Rice Research Institute, and national governments.

Looking to the future, agricultural production, market access and trade will continue to be important for countries in this region. The centre will continue to address the associated issues of biosecurity, sustainable crop management and capacity building, as well as the big challenges of food security, climate change, and loss of biodiversity and ecosystem services.

### Contact us

CABI, PO Box 210,  
43400 UPM Serdang  
Selangor, Malaysia

**T:** +60(0)3 894329321

**E:** [cabisea@cabi.org](mailto:cabisea@cabi.org)





## CABI's centre in Rawalpindi, Pakistan

CABI's centre in Pakistan was established in 1957, and coordinates CABI activities in Central and Western Asia. This is a region where small-scale farming is widespread, employing a large percentage of the population in many areas. Agriculture contributes heavily towards the GDP of countries in Central and West Asia, and is highly important to the development of the region.

The centre works to help farmers in the region increase yields, improve the quality of crops and access markets, in a sustainable, environmentally-sensitive way.

Access to knowledge, and farmer involvement and participation is key to the centre's work. The centre pioneered the Farmer Field School approach and has delivered training on subjects including good agricultural practice (GAP), sanitary and phyto-sanitary (SPS) measures, integrated pest and crop management, and business and marketing skills.

The centre's horticultural expertise helps local smallholder farmers improve their production and profitability by providing them with access to better quality seeds, and encouraging farmers to adopt good, sustainable soil and production practices. Integrated crop management is encouraged, including managing agricultural pests and diseases through safe biological means. Regional plant clinics give farmers the information they need to lose less of

their crops to pests and diseases. The centre also helps farmers overcome barriers to getting their crops to market.

Post-disaster agricultural support is provided by the centre. Individuals and groups are encouraged to plan for, and thus minimise the impact of such disasters.

The centre works with a large number of donors and organizations in order to facilitate its work, including national and regional governments, private sector bodies, foundations, NGOs, and other experts in the field.

Looking to the future the centre will focus on the delivery of agricultural knowledge, using plant clinics and innovative ICT methods to reach greater numbers of farmers and give them the knowledge to make positive choices and decisions about the way they farm.

### Contact us

CABI, Opposite 1-A, Data Gunj Baksh Road  
Satellite Town, PO Box 8, Rawalpindi, Pakistan

**T:** +92 (0)51 9290132

**E:** [sasia@cabi.org](mailto:sasia@cabi.org)

[Back to map](#)





## CABI's centre in Delémont, Switzerland

Established in 1948, the CABI Swiss Centre carries out applied scientific research and undertakes consultancy projects to support CABI's work on invasive species, knowledge for development and commodities in many different regions around the world. Located in the scenic hills above Delémont in the Canton of Jura, CABI is the home base for experts and students from several countries to research and apply their knowledge.

CABI in Switzerland has been able to develop numerous relationships with research and development partners around the world, including national ministries, science institutions, universities, development cooperation agencies, and the plant protection industry. Valuable links within Switzerland have all been strengthened further by the country's accession to CABI as a member country in 2000. Close ties are also constantly evolving between CABI and its home base, the Canton Jura.

In the coming years the centre hopes to further promote sustainable agriculture through research and teaching activities. In an exciting development, the centre is currently working with the University of Neuchâtel and the Canton Jura in Switzerland to develop a Masters of Advanced Studies on Integrated Crop Management, a move which is hoped will attract high calibre students from across the world to come to Switzerland to attain knowledge in this field of work.

CABI in Switzerland is a leading authority on the management of invasive weeds and arthropods through biological control. By investigating sustainable solutions and contributing to national and regional strategies for management, CABI is a key partner on policies and actions to control some of the world's most challenging pests.

As part of its work on invasive species, the centre assesses the risks and impacts of non-native species and their potential biological control agents. It also develops methods to mitigate risks by understanding and managing pathways of introduction of invasive plant pests, and helps Switzerland and the EU to define strategies against invasive species.

### Contact us

CABI, Rue des Grillons 1  
CH-2800 Delémont,  
Switzerland

**T:** +41 (0)32 4214870

**E:** europe-CH@cabi.org





## CABI's centre in Curepe, Trinidad & Tobago

CABI established an office in Trinidad and Tobago in 1946. Since then its scientists have worked with local partners to improve people's livelihoods in a region that is rich in natural resources but has significant social inequalities. Agriculture (particularly commodity crops) remains economically important for the area.

The centre works across the whole of the Caribbean and Central America, carrying out work that is significant not just to the region, but globally.

In recent years its focus has been on finding sustainable ways to manage crop pests and invasive species. It is also working to conserve or enhance biodiversity in the local environment (the Caribbean's exceptionally diverse ecosystems are home to many threatened species) and to support the commodity chains that flow from farmer to consumer.

To achieve this the centre researches and identifies agricultural pests and diseases, and works to mitigate the threats of invasive species. Farmers are supported in their integrated pest management (IPM) choices, and encouraged to implement sustainable crop management and production strategies.

The centre also collaborates with Ministries of Agriculture in the region, and provides information to guide policy.

Looking ahead, there are great opportunities for the centre to expand its mobile outreach work, which gives smallholder communities access to vital agricultural knowledge. This can help them improve their agricultural practices through better understanding of, for example, crop management and common pests and diseases.

There is also scope for the centre to use its skills and expertise in sanitary and phytosanitary issues to help reduce the barriers to free trade between the countries in the region. In a region where tourism is vital, making it easier to supply fresh food and produce to tourist hotels and cruise ships for example, could have a significant economic impact.

### Contact us

CABI, Gordon Street, Curepe

Trinidad and Tobago

**T:** +1 868 6457628

**E:** caribbeanLA@cabi.org





## CABI's centre in Boston, USA

Our North America team of three concentrate on business development, selling and promoting our publishing products, and supporting our North American customers.

CABI has 2 staff members in its Team based in the USA. They are:

**Patricia Neenan Kilmartin**, Strategic Partnerships Manager, The Americas and **Hope Jansen**, Regional Sales Manager, USA and Canada.

### Contact us

The Publishing team:

CABI, 38 Chauncey St.

Suite 1002, Boston MA 02111

**T:** +1 800-552-3083 (Toll free)

**E:** [cabi-nao@cabi.org](mailto:cabi-nao@cabi.org)



## using ICTs to make information available to support farmers

CABI works with farmers, mobile operators, content providers, extension services and industry bodies to provide mobile services across the whole agricultural supply chain.

The growth of mobile in developing countries, and rural regions in particular, presents an opportunity to deliver critical, information-based agricultural services directly to rural smallholder farmers. Access to the right information, absorbed and applied correctly, can increase productivity and improve livelihoods in many of these farming households.

Across the developing world, around 40% of people now actively subscribe to mobile services, with 130 million new subscribers every year, and mobile (2G) coverage is around 95% by population<sup>1</sup>.

In addition, the number of mobile-broadband subscriptions in developing countries surpassed those in developed countries in 2013, reaching a total of 1.1 billion<sup>2</sup>.

1. GSMA Mobile for development Intelligence: "Scaling Mobile for Development – A Developing World Opportunity", 2013.

2. ITU World telecommunication / ICT database (estimate), 2013.

CABI's **Direct2Farm** mobile-enabled agriculture information service is being used to underpin multiple agro-advisory services across India and Africa. A key feature of these mobile services is the ability to reach large groups of remote users such as rural farmers. They are therefore being used to complement existing field-based extension services operated by Governments and private industry.





## producing leading agricultural resources

“Putting scientific researchers in touch with the best of the life sciences”

CABI’s bibliographic databases, including the world-renowned CAB Abstracts and Global Health, contain over 10 million bibliographic records, full-text articles, news items and reports across the applied life sciences.

To request a free trial of CABI’s products for your institution please contact [sales@cabi.org](mailto:sales@cabi.org).





## **publishing books ebooks and multimedia tools**

We produce key scientific publications, including **CAB Abstracts** – the world-leading database covering agriculture and environment and Global Health - the definitive bibliographic database for public health information.

We also publish multimedia compendia, books, eBooks and full text electronic resources aiming to further science and its application to real life.

To help you find the most relevant content we have also introduced a new structure for our eBooks range offering total flexibility.

Behind each of our products is a team of subject specialists committed to delivering the most relevant and authoritative information to researchers worldwide. Our expertise includes agriculture, animal and veterinary sciences, environmental sciences, human health, food and nutrition, leisure and tourism, microbiology and parasitology, and plant sciences.





## training farmers on the best methods for harvesting and processing

Our goal is to ensure that the people we work with, and for, have the skills, resources and understanding to be able to sustain new initiatives, systems and approaches, both now and in the future. Our capacity building efforts go well beyond a focus on agricultural research and extension. We strengthen the networks, interactions, and policy and institutional conditions, as well as create the environment from which innovation arises.

To deliver impacts we facilitate, as well as teach and train. This allows farmers, advisers, technicians and policy-makers to explore their own and collective goal performance, enabling them to self-generate more effective ways of working. Our ability to combine training and facilitation skills with a culturally-sensitive local presence really sets us apart from other development organizations.

Good agricultural practices ensure that safe and healthy food is produced that's environmentally and socially sustainable. Small scale farmers then need the right information to access the best markets to sell their produce at a good price. We promote integrated solutions to solve these issues.

At the core of our work is a team of highly skilled, highly experienced people – agronomists, training and development experts, supply chain specialists and business consultants, all with local and international experience.

Our goal is to ensure that the people we work with, and for, have the skills, resources and understanding to be able to sustain new initiatives, systems and approaches, both now and in the future.

Our capacity building efforts go well beyond a focus on agricultural research and extension. We strengthen the networks, interactions, and policy and institutional conditions, as well as create the environment from which innovation arises.





# advising on good agricultural practice and market access

Agricultural trade is a powerful engine for economic growth, poverty alleviation and food security.

Harnessing this power can be difficult. Small scale farmers in developing countries often struggle to deliver the quantity, quality and continuity that the global retailers, wholesalers and processors need.

Our member countries want our help to develop their trade potential and improve access to markets for their agriculture. We help smallholder farmers gain the benefits from trading agricultural commodities whilst meeting consumer demands.

We help link the producer and consumer agendas, integrating small scale farmers into global supply chains. At the core of our work is a team of highly skilled, highly experienced people – agronomists, training and development experts, supply chain specialists and business consultants, all with local and international experience.

We connect three important sectors of the global economy – agriculture, food processing and distribution. Together – for key commodity crops – they can be more efficient and enhance profitability.

We provide access to knowledge sources, run training courses, develop manuals and provide mobile agri-advisory services.

By 2050, global food demand is predicted to double. To secure future agricultural raw materials, corporations will need to expand their suppliers and reduce waste in the supply chain

As experts, we work with our Member Countries to integrate developing country agriculture into global supply chains.

To deliver impacts we facilitate, as well as teach and train. This allows farmers, advisers, technicians and policy-makers to explore their own and collective goal performance, enabling them to self-generate more effective ways of working.





## ensuring farmers benefit from scientific research outcomes

Improved use of agricultural technology and improved farming practices depends on the successful dissemination of research evidence to smallholder farmers, advisors, suppliers, market agents, governments and others.

Often there is a disconnect between research and development. To bridge that gap, organizations need to bring scientific rigour and expertise in communications to bear, and very few can do both.

CABI is in a unique position to support uptake of research outputs, from our own work, and that of others. We analyse barriers between knowledge and its application by farmers and we work with partners to understand and minimise those barriers. This requires a deep understanding of the science behind the technologies we are transferring to new users; the capacity to find, appraise and use evidence; and the skills to communicate with both specialist and non-specialist audiences.

CABI manages a programme known as 'The Good Seed Initiative' which builds the capacity of farmers to manage their crops in a way that improves the quality of seeds saved for future sowing and makes new seed varieties available through informal and formal seed systems. We use discovery learning methods to communicate this knowledge, as well as training farmer group representatives to pass it on. This programme is currently focused in East Africa.

To improve crop production in a wide range of countries, we support the creation of crop protection guidelines and other policy tools, and then help synchronise with international agricultural standards. We must communicate with many different audiences (extension, research, education, input supply, farmers etc.) within very different policy frameworks (Democratic Peoples' Republic of Korea, Myanmar, Albania, Argentina and many African countries).





# providing easy access to plant clinics and diagnostic information

**Plantwise** is a global programme led by CABI, which works to help farmers lose less of what they grow to plant health problems. Working closely with national agricultural advisory services we establish and support sustainable networks of plant clinics, run by trained plant doctors, where farmers can find practical plant health advice.

Plant clinics work similarly to clinics for human health: farmers visit with samples of their crops, and plant doctors diagnose the problem and make science-based recommendations on ways to manage it.

Plant clinics are reinforced by the Plantwise knowledge bank, a gateway to practical online and offline plant health information, including diagnostic resources, best-practice pest management advice and plant clinic data analysis for targeted crop protection.

The knowledge bank offers tools and insights, and the plant clinics create an efficient and effective way to reach farmers with best-practice advice. These two unique resources are part of the greater Plantwise approach to strengthen the plant health system from within. Ultimately, the stronger the plant health system in a country, the better equipped the country will be to help farmers provide a safe and sustainable food supply and improve their lives.





## helping farmers improve their crop quality and yield

Soil is not a lifeless growing medium but a living, dynamic and subtly changing environment.

Soil and seed health are both extremely important to farmers, especially smallholders in developing countries. Here, they mean healthy plants and a good yield, affecting food security, income and livelihoods.

Healthy soils are also more biologically active, contributing to a healthy environment, good water and air quality and supporting lives.

Although imperative and often in demand, there are many barriers to ensuring farmers get the right seeds to plant in healthy soil.

We promote integrated solutions, meaning we improve access to better seeds and planting materials; promote efficient and effective use of mineral fertilizer and organic inputs, combined with good agricultural practices.

Our experts produce communication materials, extension tools and run events and training for farmers, extension workers and policy makers. We also work along the entire chain to ensure farmers get good seeds to grow good crops.





## encouraging higher investment in smallholder farmers

Coffee, produced by over 50 countries, is one of the largest traded commodities in the world. It provides livelihoods for some 25 million farming families, and is crucial to the GDP of many countries.

Supply and demand are in very tight balance, and as more markets emerge, more and more coffee is being consumed. With statistics showing that African production is falling behind, it needs ways of increasing production and quality. In countries such as Ethiopia and Rwanda where coffee plays a critical role in the economy, revitalising coffee production and quality is vital; allowing farmers to attract premiums and improve their household income.

Despite the superior varieties of the coffee, the optimum soil and the climate, the industry has declined substantially here.

Following up on a previous three year pilot project aimed at improving coffee quality in Rwanda and Ethiopia, this project aims to continue to improve processing practices by smallholders here. This will result in an overall sustainable increase in the quality and quantity of sun-dried, semi-washed and fully washed Arabica coffee.





## combating invasives and plant pests

Invasive species, such as non-native weeds, animals and microorganisms are a major issue. They are one of the main causes of biodiversity and economic loss and are impacting on human health and livelihoods. These problematic species affect all types of ecosystems and are a global problem.

Controlling invasive species can be problematic as chemical and mechanical management options are often ineffective in the long term, impractical, prohibitively costly or even illegal in many cases.

Prevention is more cost effective and easier than control. Effective prevention and management requires international cooperation and action. National governments can limit the movement of invasive species across borders through proper quarantine regulation, inspection and by ensuring food supply chains follow appropriate sanitary and phytosanitary measures.

We have been working on invasive species for over 100 years, and we now develop workable approaches to tackle major invasive species threats. We research and implement biological control programmes to deal with problematic invasive species including invasive plants, animals and microorganisms which cause adverse detrimental effects where they are introduced. We also study the impact of invasive species on the habitats they invade, advise on invasive species policy and produce books and tools for environmental managers, researchers and farmers. Globalization, climate change and human mobility have fundamentally altered the biological world in which we live. As a result of travel, transport and tourism, species have been moved into new environments, where many have established and proliferated.





## managing and screening the UK's fungal genetic resource

CABI's collection of fungi and bacteria provides a rich and untapped source of biological and chemical diversity for deriving natural products.

We manage a collection of over 28,000 living strains including the UK National Collection of Fungus Cultures. The culture collection contains over 6,000 species isolated from environmental and agricultural systems worldwide, making it one of the most significant in the world.

Microorganisms and their natural products can be used in many commercial processes: including biofuel production, composting, food, and pharmaceutical processes. They have long been known as sources of enzymes, foods, and vitamins, and have provided novel molecules for drug development.

The culture collection is a member of the United Kingdom National Culture Collection (UKNCC), is a UNESCO Microbial Resource Centre (MIRCEN), and an International Depository Authority (IDA) within the Budapest Treaty (1977).

We supply authenticated reference, type and test strains to businesses and research establishments. We maintain ISO846, BS2011 Part II j and Mil Std 810G test strains from the European, the UK and US testing standards, and hold many other test and challenge strains. We hold production strains for enzymes, metabolites, active biomolecules and novel products.

We can supply active or freeze-dried cultures and, for ease of use or where containment facilities for the living culture are more demanding, we can also supply DNA and culture extracts.





## advising on global trade and quarantine issues

It is important for smallholders, individual countries and corporates alike for trade to be efficient. Unfortunately, with the growing issue of invasive species, pests and diseases, trading agricultural commodities is a complex task.

So, CABI advises on sanitary and phytosanitary (SPS) issues, provides support and undertakes capacity development within developing countries. This strengthens their ability to support exports and maintain biosecurity.

By encouraging and facilitating good practice, our work also benefits the entire food supply chain.